

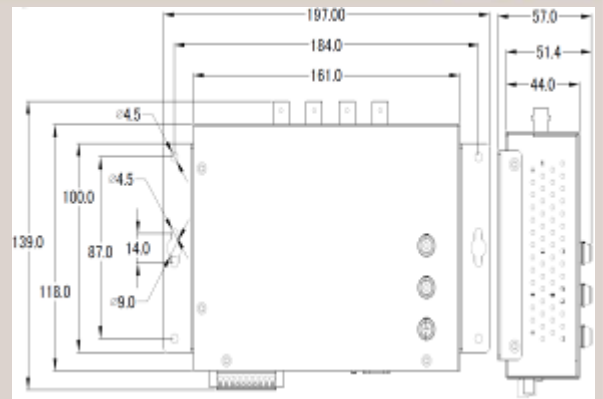
## Accelerometer Data Logger Device



AR-200



AR-400



Dimensions

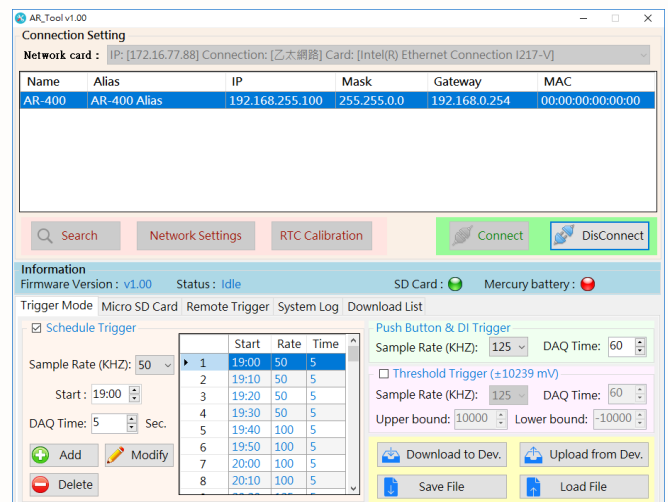
AR-200 / AR-400 is a high-performance dynamic signal acquisition module equipped with 2 / 4 analog input channels providing simultaneous-sampling at up to 200 / 125 kHz per channel. The module built-in 16 bit resolution ADC and 3 mA excitation current to measure IEPE sensors, and save data in SDHC type flash. We also provide flexible trigger modes, sample rate, and recording time for efficient data acquisition, making it ideal for signal measurement in vibration applications.

## Features

- 2 or 4 simultaneous, 16-bit resolution ADC
- Support 2 or 4 IEPE input , and built-in 3 mA excitation current
- AR-200 support sample rate: 200kHz 、 100kHz 、 50kHz
- AR-400 support sample rate: 125kHz 、 100kHz 、 50kHz
- Max. Recording time : 120 seconds
- Dynamic range : +/- 10V
- Flexible trigger modes: Push button trigger 、 Schedule trigger 、 analog threshold trigger 、 digital input trigger and utility remote trigger
- Supports 4 to 32 GB micro SDHC type flash
- Provide 2-ch DI and 1-ch Relay
- Provide LED indicators
- Wide range of power input (+10 ~ +30 VDC) and operating temperature (-25 ~ +75 °C)

## Utility

- Provide device search function.
- Support trigger mode configuration
- Support RTC calibration
- Provide recording file(\*.ar) convert to various file type (\*.xls, \*.csv, \*.txt)
- Support utility remote trigger mode
- Show system event log



## Pin Assignments

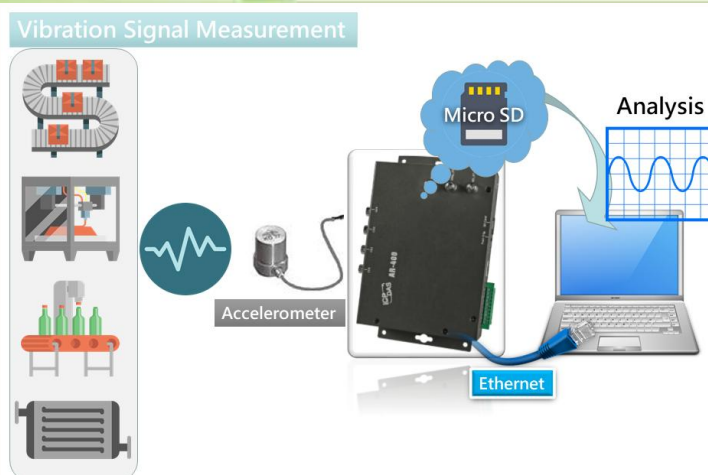
Pin No.	Name
1	F.G.
2	GND
3	+Vs
4	RL.NO
5	RL.COM
6	D-
7	D+
8	ISO.GND
9	DI
10	DI.COM



## Hardware Specifications

Module Name	AR-200	AR-400
<b>Analog Input Interface</b>		
Channels	2 (simultaneous sampling)	4 (simultaneous sampling)
ADC Resolution	16 bit	
Sample rate (kHz)	50, 100, 200	50, 100, 125
Dynamic range	+/- 10V	
IEPE	3 mA	
Trigger mode	Push button trigger · Schedule trigger · Analog threshold trigger · Digital input trigger · Utility Remote trigger	
Connector	BNC	
<b>Ethernet Interface</b>		
Controller	10/100Base-TX Ethernet Controller (Auto-negotiating, Auto_MDIX)	
Connector	RJ-45 with LED indicator	
<b>SD Card Interface</b>		
Storage Media	Micro SDHC type flash – support 4 to 32 GB	
Recording Format	Binary	
<b>LED</b>		
LED indicator	PWR LED, DAQ_ST LED, SD_ST LED	
<b>Power</b>		
Power supply	Unregulated +10 ~ +30 V <sub>DC</sub>	
Protection	Power reverse polarity protection, Over-voltage brown-out protection	
Power Consumption	4.3W	
<b>Mechanism</b>		
Installation	Wall Mount	
Dimensions	197 mm x 139 mm x 57 mm (W x L x H)	
<b>Environment</b>		
Operating Temp.	-25 ~ 75 °C	
Storage Temp.	-30 ~ 80 °C	
Humidity	10 ~ 90% RH, non-condensing	

## Application



## Order Information

<b>AR-200 CR</b>	2-Channels Accelerometer Data Logger device (RoHS)
<b>AR-400 CR</b>	4-Channels Accelerometer Data Logger device (RoHS)