



EMS SmartView™

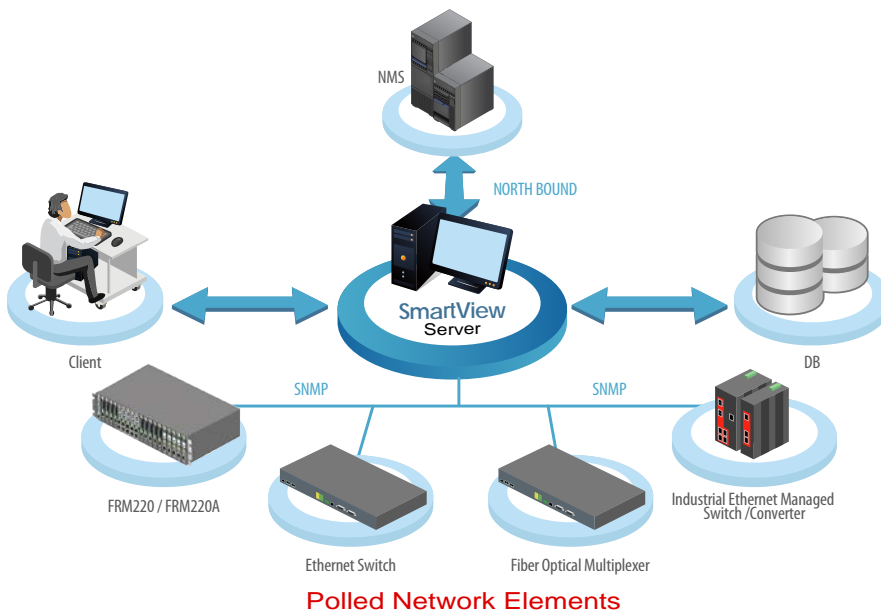
Element Management System

- Centralized Network Management Platform
- Real-time visual representations and processing of alarms
- Easy and User-Friendly Operation Interface
- Long term event storage

- Remote access control for efficient configuration
- Traffic / Performance monitoring and management
- Alarm Trap and event log management

- Auto Discovery and Device Viewer
- Allow up to 25 administrators to login
- Applied to CTC Union's Main Products

Network Scheme Diagram



- User-Friendly Operation Interface
- Robust Client / Server architecture
- Network Monitoring and Management
- Database for persistent event storage
- Security Access Management

Agents

All of CTC Union's SNMP enabled products, such as FRM220/220A platform, FMUX series of fiber multiplexers and Industrial series L2 managed switch are manageable by CTC Union SmartView™ EMS management Platform.

SmartView™ Server

The server handles connection with the network devices using SNMP protocol, and is responsible for communication of requests from management clients. SmartView™ Server collects the information data from specific SNMP agents, stores the information into a persistent database and updates that information to the management clients.

Microsoft® SQL Server for Persistent Storage

SQL Server is the place where the SmartView™ collected data, such as alarms, traps and user actions is stored for long term retrieval. SmartView™ requires Microsoft® SQL Server and is compatible with SQL Server 2005, SQL 2005 Express, SQL 2008 Server, SQL 2008 Express, SQL 2012 Server and SQL 2012 Express. (The EMS installer will install the free version Microsoft® SQL 2008 Express by default.)

Workstation-Clients

Management clients are provided with the JAVA applet GUI to monitor and control the agents at far end. They also receive the Alarm and Traps from the corresponding SNMP Agents. Multiple workstations are allowed, with a maximum of 25 concurrent logged in users.

Features at a Glance

Fault Management

Trap Collection

All traps will be stored in SQL database. When an SNMP agent experiences an abnormal condition it will send an SNMP trap message to SmartView™ which then receives the message, and records it in the database. Depending on preset conditions, SmartView™ may sound an audible alarm, send an email or SMS alert message or just simply flash the trap message on the administrative console screen.

No.	Ack	Time	Device	Address	Message
1	✓	2013-10-31 16:43:25	FRM220-44	10.1.1.44	Chassis1, Slot06, Local: Fiber Link Down.
2	✓	2013-10-31 16:43:25	FRM220-44	10.1.1.44	Chassis1, Slot07, Local: Fiber Link Down.
3	✓	2013-10-31 16:43:25	FRM220-44	10.1.1.44	Chassis1, Slot10, Local: Fiber1 Link Down.
4	✓	2013-10-31 16:43:25	FRM220-44	10.1.1.44	Chassis1, Slot10, Local: Fiber2 Link Down.
5	✓	2013-10-31 16:43:25	FRM220-44	10.1.1.44	Chassis1, Slot11, Local: Fiber Link Down.
6	✓	2013-10-31 16:43:25	FRM220-44	10.1.1.44	Chassis1, Slot11, Local: UTP Link Down.
7	✓	2013-10-31 16:43:26	FRM220-44	10.1.1.44	Chassis1, Slot12, Local: Fiber Link Down.
8	✓	2013-10-31 16:43:26	FRM220-44	10.1.1.44	Chassis1, Slot12, Local: UTP Link Down.
9	✓	2013-10-31 16:43:26	FRM220-44	10.1.1.44	Chassis1, Slot13, Local: Fiber1 Link Down.
10	✓	2013-10-31 16:43:26	FRM220-44	10.1.1.44	Chassis1, Slot13, Local: Fiber2 Link Down.
11	✓	2013-10-31 16:43:26	FRM220-44	10.1.1.44	Chassis1, Slot13, Local: Fiber3 Link Down.
12	✗	2013-10-31 16:43:26	FRM220-44	10.1.1.44	Chassis1, Slot15, Local: UTP Link Down.
13	✗	2013-10-31 16:43:26	FRM220-44	10.1.1.44	Chassis1, Slot15, Local: E1 Signal Loss.
14	✗	2013-10-31 16:43:26	FRM220-44	10.1.1.44	Chassis1, Slot16, Local: UTP Link Down.
15	✗	2013-10-31 16:43:26	FRM220-44	10.1.1.44	Chassis1, Slot16, Local: E1 Signal Loss.
16	✗	2013-10-31 16:43:26	FRM220-44	10.1.1.44	Chassis1, Slot17, Local: Fiber Link Down.
17	✗	2013-10-31 16:43:26	FRM220-44	10.1.1.44	Chassis1, Slot17, Local: UTP Link Down.
18	✗	2013-10-31 16:43:26	FRM220-44	10.1.1.44	Chassis1, Slot18, Local: Fiber Link Down.
19	✗	2013-10-31 16:43:26	FRM220-44	10.1.1.44	Chassis1, Slot18, Local: UTP Link Down.
20	✗	2013-10-31 16:43:26	FRM220-44	10.1.1.44	Chassis1, Slot19, Local: Fiber Link Down.
21	✗	2013-10-31 16:43:26	FRM220-44	10.1.1.44	Chassis1, Slot19, Local: UTP Link Down.
22	✗	2013-10-31 16:43:26	FRM220-44	10.1.1.44	Chassis1, Slot20, Local: Fiber Link Down.
23	✗	2013-10-31 16:43:27	FRM220-44	10.1.1.44	Chassis1, Slot20, Local: UTP Link Down.
24	✗	2013-10-31 16:43:27	FRM220-44	10.1.1.44	Chassis1, Slot02, Local: Card FRM220A-1000EAS/X Found.
25	✗	2013-10-31 16:43:27	FRM220-44	10.1.1.44	Chassis1, Slot03, Local: Card FRM220A-1000EAS/X Found.
26	✗	2013-10-31 16:43:27	FRM220-44	10.1.1.44	Chassis1, Slot04, Local: Card FRM220A-1000EAS/X Found.
27	✗	2013-10-31 16:43:39	FRM220-44	10.1.1.44	Chassis1, Slot05, Local: Card FRM220A-1000EAS/X Found.
28	✗	2013-10-31 16:44:10	FRM220-44	10.1.1.44	Chassis1, Slot02, Local: Fiber1 Link Down.
29	✗	2013-10-31 16:44:10	FRM220-44	10.1.1.44	Chassis1, Slot02, Local: Fiber2 Link Down.

Trap Messages

Active Alarm

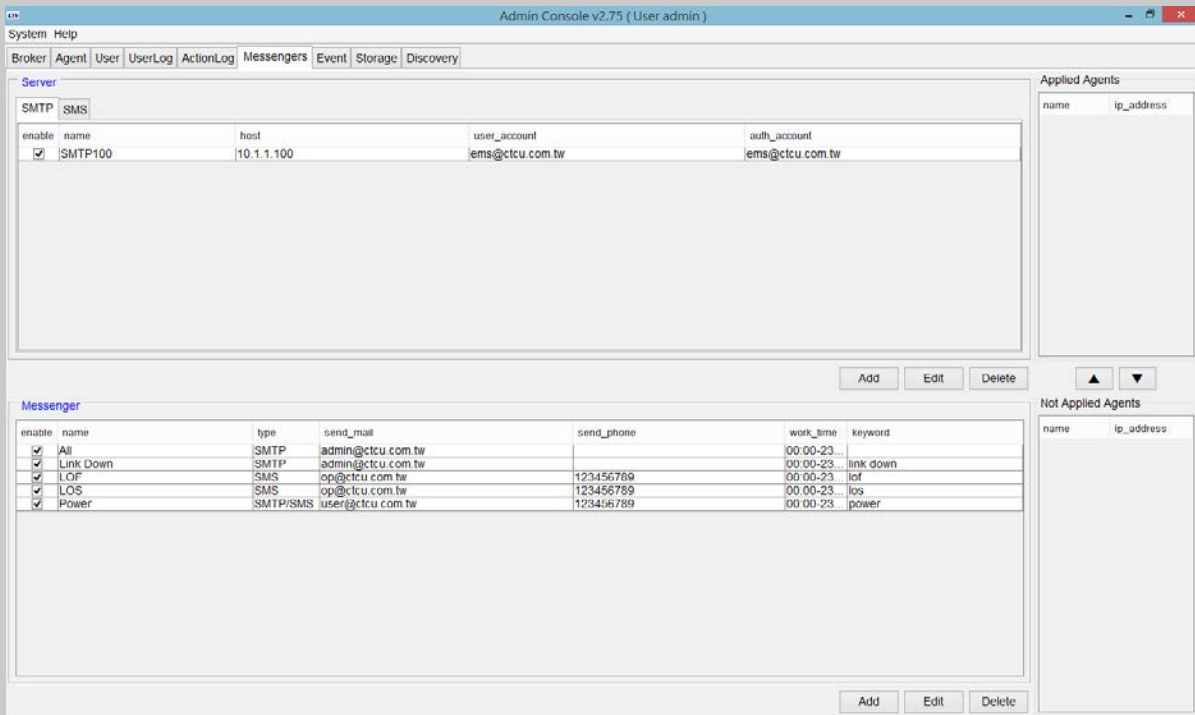
SmartView™ continuously polls all network devices under its management and will visually display all alarm conditions found. Alarms will be categorized as Major, Minor or Warning, depending on severity. Although alarms may be acknowledged, they remain actively displayed on the alarm page until they no longer have an alarm condition.

No.	Ack	Time	Device	Address	Location	Message	Severity
1	✓	2013-10-31 16:48:20	FMUX04E-43	10.1.1.43	Local	Fiber2 port has no link.	Warning
2	✓	2013-10-31 16:48:28	FMUX04E-43	10.1.1.43	Local	E1 channel CH1 inactive.	Warning
3	✓	2013-10-31 16:48:20	FMUX04E-43	10.1.1.43	Local	E1 channel CH2 inactive.	Warning
4	✓	2013-10-31 16:48:28	FMUX04E-43	10.1.1.43	Local	E1 channel CH3 inactive.	Warning
5	✓	2013-10-31 16:48:20	FMUX04E-43	10.1.1.43	Local	E1 channel CH4 inactive.	Warning
6	✓	2013-10-31 16:48:28	FMUX04E-43	10.1.1.43	Local	RS232 port inactive.	Warning
7	✗	2013-10-31 16:48:39	FMUX04E-43	10.1.1.43	Local	LAN2 port inactive.	Warning
8	✗	2013-10-31 16:49:50	FMUX04E-43	10.1.1.43	Local	LAN3 port inactive.	Warning
9	✗	2013-10-31 17:06:01	FMUX04E-43	10.1.1.43	Remote	ES error (Error seconds).	Minor
10	✗	2013-10-31 17:04:36	FMUX04E-43	10.1.1.43	Remote	Fiber2 port has no link.	Warning
11	✗	2013-10-31 17:04:36	FMUX04E-43	10.1.1.43	Remote	E1 channel CH1 inactive.	Warning
12	✗	2013-10-31 17:04:36	FMUX04E-43	10.1.1.43	Remote	E1 channel CH2 inactive.	Warning
13	✗	2013-10-31 17:04:36	FMUX04E-43	10.1.1.43	Remote	E1 channel CH3 inactive.	Warning
14	✗	2013-10-31 17:04:36	FMUX04E-43	10.1.1.43	Remote	E1 channel CH4 inactive.	Warning
15	✗	2013-10-31 17:04:36	FMUX04E-43	10.1.1.43	Remote	RS232 port inactive.	Warning
16	✗	2013-10-31 17:04:36	FMUX04E-43	10.1.1.43	Remote	LAN1 port inactive.	Warning
17	✗	2013-10-31 17:04:36	FMUX04E-43	10.1.1.43	Remote	LAN2 port inactive.	Warning
18	✗	2013-10-31 17:04:36	FMUX04E-43	10.1.1.43	Remote	LAN3 port inactive.	Warning
19	✗	2013-10-31 17:04:36	FMUX04E-43	10.1.1.43	Remote	Phone port inactive.	Warning
20	✗	2013-10-31 16:43:58	FRM220-44	10.1.1.44	Rack:1 Slot:1 Local	Power is not working or not installed.	Minor
21	✗	2013-10-31 16:43:25	FRM220-44	10.1.1.44	Rack:1 Slot:1 Local	Fan:1 is not working or not installed.	Minor
22	✗	2013-10-31 16:43:25	FRM220-44	10.1.1.44	Rack:1 Slot:1 Local	Alarm:1 setting is in alarm.	Minor
23	✗	2013-10-31 16:43:26	FRM220-44	10.1.1.44	Rack:1 Slot:1 Local	Alarm:2 setting is in alarm.	Minor
24	✗	2013-10-31 16:43:58	FRM220-44	10.1.1.44	Rack:1 Slot:2 Local	Fiber:1 port has no link.	Major
25	✗	2013-10-31 16:43:58	FRM220-44	10.1.1.44	Rack:1 Slot:2 Local	Fiber:2 port has no link.	Major
26	✗	2013-10-31 16:43:58	FRM220-44	10.1.1.44	Rack:1 Slot:2 Local	UTP:3 port has no link.	Major
27	✗	2013-10-31 16:43:58	FRM220-44	10.1.1.44	Rack:1 Slot:2 Local	UTP:4 port has no link.	Major
28	✗	2013-10-31 16:43:58	FRM220-44	10.1.1.44	Rack:1 Slot:3 Local	Fiber:1 port has no link.	Major
29	✗	2013-10-31 16:43:58	FRM220-44	10.1.1.44	Rack:1 Slot:3 Local	Fiber:2 port has no link.	Major

Active Warnings

Alarms sent by E-mail & SMS

The SmartView™ is capable of sending emails and or SMS text messages to selected administrators when critical alarms occur. Prompt notification of system problems aid in getting problems in the network fixed in the shortest time possible.



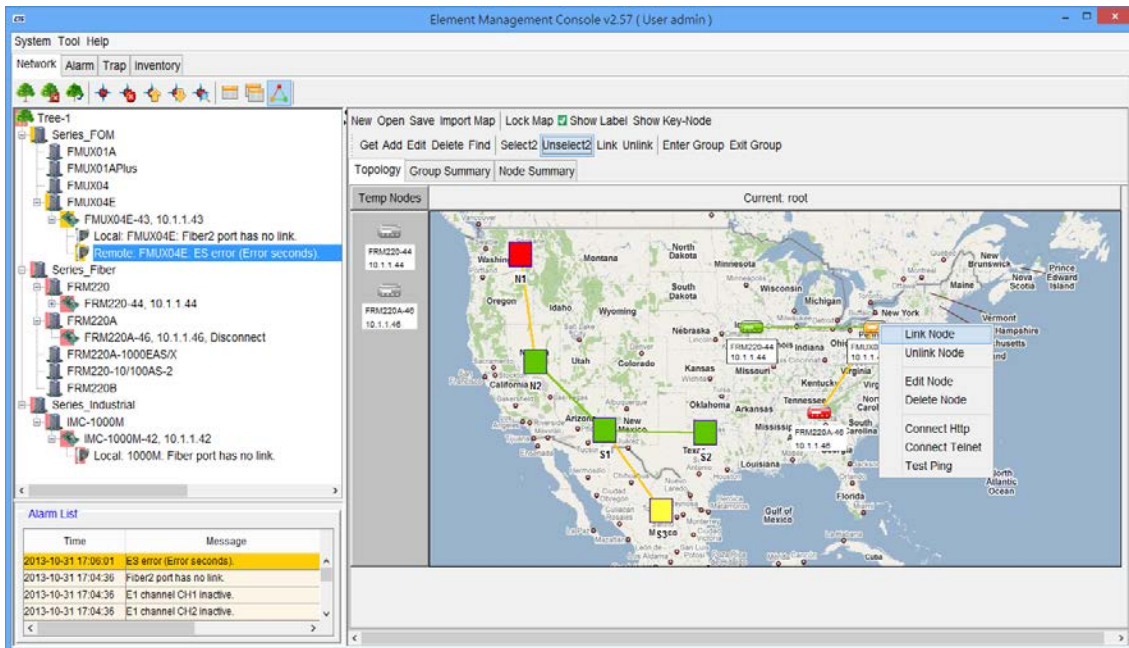
Alarms Sent by Email & SMS

Configuration Management

Network Topology

User can load maps to SQL server, load maps from SQL server or delete attached maps. Download procedure is very simple. Map area may be used to layout any objects from Root and Node panel.

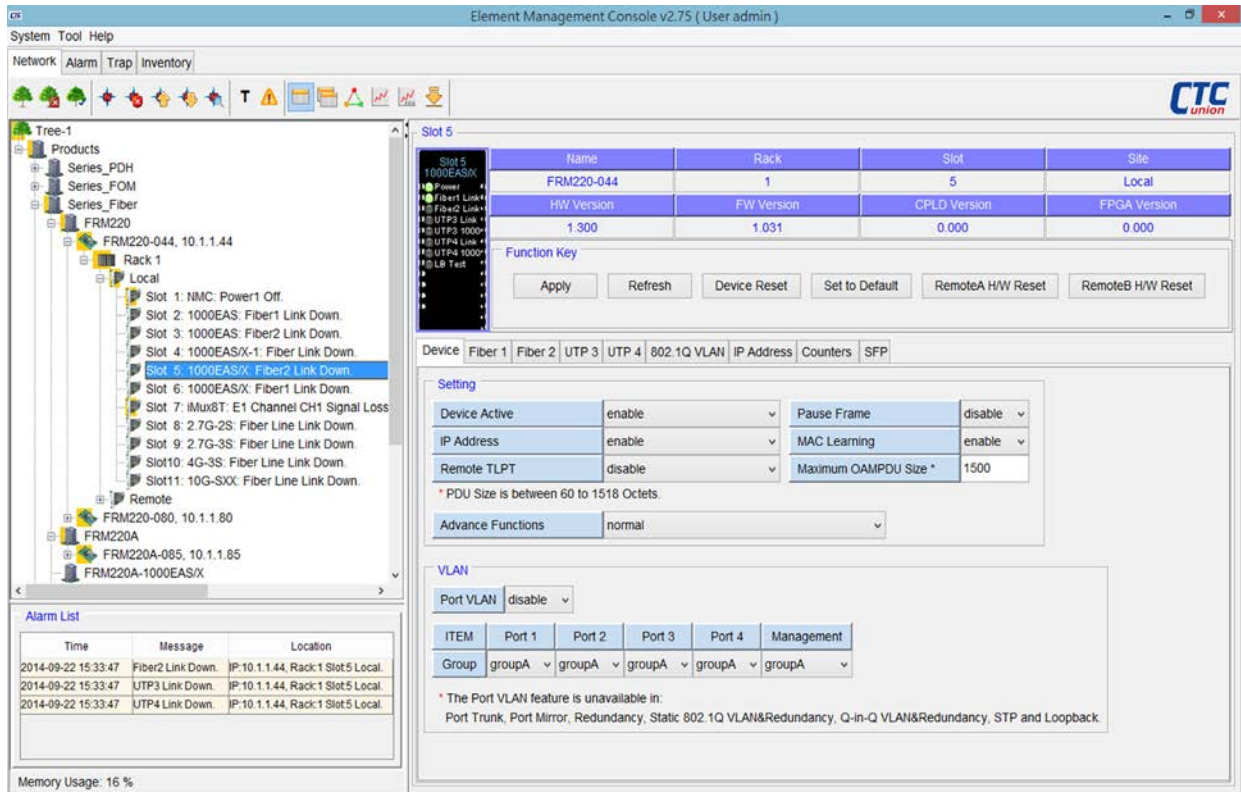
Using drag-and-drop, put any object to map area. Any label or network element location name may be added to object. Objects in red color indicate some alarm condition is present in the device. Right clicking an object brings a popup window to select Telnet or http management directly.



Network Topology

Network Element Configuration

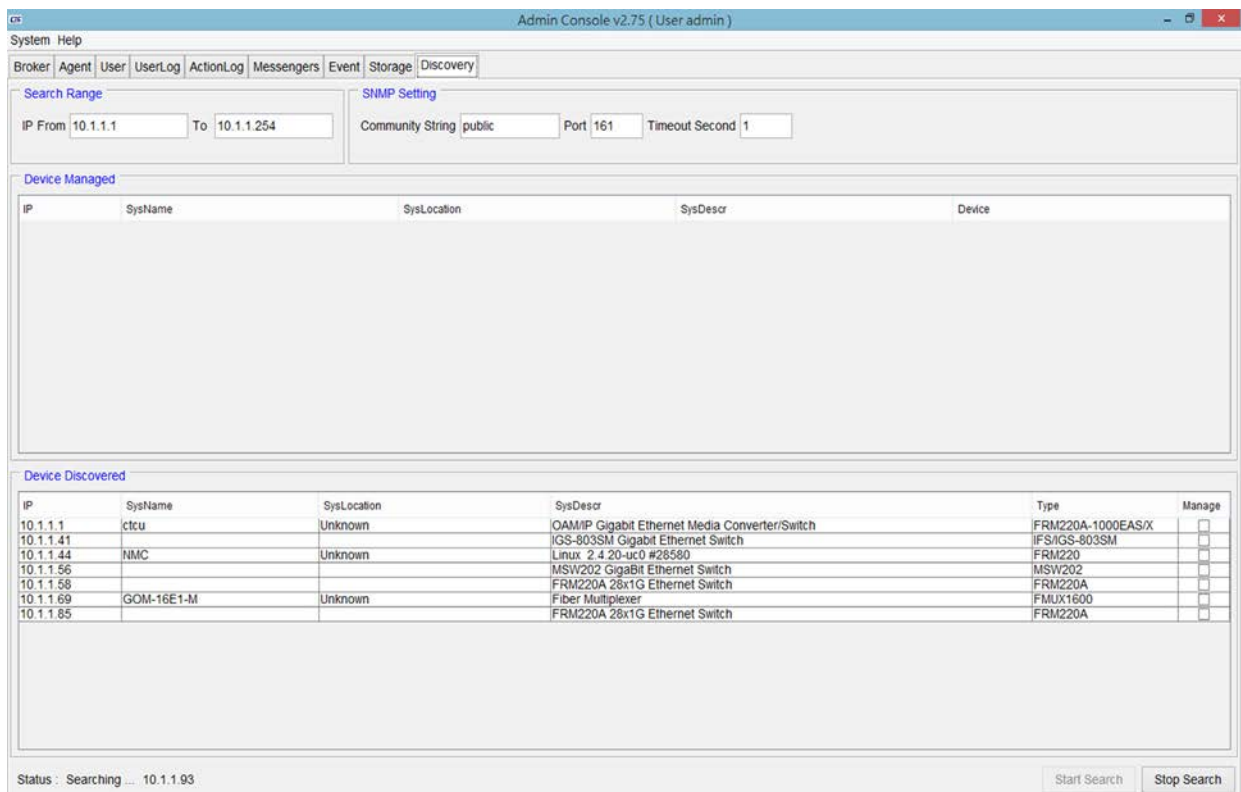
SmartView™ is able to provide a single point of configuration for the network elements. Most settings only require mouse clicks and by using a tab format, most scrolling is eliminated. Current settings and status are displayed along with hardware and firmware versions for each element.



Network Element Configuration

Network Element Discovery

SmartView™ has a tool for automatically discovering SNMP agents on the network. Simply enter an IP address range and the discovery program will ping every IP address looking for SNMP agents. Once discovered, the agents can be selected and brought into the broker for polling.



Network Element Discovery

Accounting Management

The accounting management supports reading a factory programmed serial number specific for each line card. The location, status and serial numbers of all assets can be managed and exported.

No.	Device	Address	Location	Type	HW Version	FW Version	Serial Number	Alias	Status	Date
1	FRM220-44	10.1.1.44	Rack:1 Slot:10 Local	Protection	1.100	1.050	098765432101234567890		On Line	2013-10-31
2	FRM220-44	10.1.1.44	Rack:1 Slot:19 Local	1002ES	1.100	1.000	888888888888888888888888		On Line	2013-10-31
3	FRM220-44	10.1.1.44	Rack:1 Slot:7 Local	NMC	1.01	3.54	F1234V012901313A00001		On Line	2013-10-31
4	FRM220-44	10.1.1.44	Rack:1 Slot:1 Local	8E1ET100S	1.300	1.226	10124A36800000003861		On Line	2013-10-31
5	FRM220-44	10.1.1.44	Rack:1 Slot:8 Local	100IS_2	1.100	2.000	F887B358D91986962NB0		On Line	2013-10-31
6	FRM220-44	10.1.1.44	Rack:1 Slot:9 Local	100IS_2	1.100	2.000	07203D1271246E6B2WS		On Line	2013-10-31
7	FRM220-44	10.1.1.44	Rack:1 Slot:12 Local	10GE_TS	1.100	1.001	W6000357937260927635		On Line	2013-10-31
8	FRM220-44	10.1.1.44	Rack:1 Slot:13 Local	10G_SXX	1.100	2.008	None		On Line	2013-10-31
9	FRM220-44	10.1.1.44	Rack:1 Slot:14 Local	3R10G_SS	1.100	2.008	8885AC34D90429AA0DA		On Line	2013-10-31
10	FRM220-44	10.1.1.44	Rack:1 Slot:15 Local	EOE1G	1.100	1.023	None		On Line	2013-10-31
11	FRM220-44	10.1.1.44	Rack:1 Slot:16 Local	EOE1G	1.100	1.023	BE37559BB78FBEB2FD0		On Line	2013-10-31
12	FRM220-44	10.1.1.44	Rack:1 Slot:17 Local	100M	1.000	1.050	0AD7BEB10B6BYC67C3		On Line	2013-10-31
13	FRM220-44	10.1.1.44	Rack:1 Slot:18 Local	100M	1.100	1.050	4PXRW2XKWBGYV33FB7		On Line	2013-10-31
14	FRM220-44	10.1.1.44	Rack:1 Slot:20 Local	1000M	1.100	1.070	A2C46823E6E44AWSW6		On Line	2013-10-31
15	FRM220A-46	10.1.1.46	Rack:0 Slot:1 Local	1000EASX	1.200	1.026	0003579372609276304CA		Off Line	2013-10-31
16	FRM220A-46	10.1.1.46	Rack:0 Slot:2 Local	1000EASX	1.300	1.029	None		Off Line	2013-10-31
17	FRM220A-46	10.1.1.46	Rack:0 Slot:3 Local	1000EASX	1.200	1.026	5F4B31307FB6BYC6T124		Off Line	2013-10-31
18	FRM220A-46	10.1.1.46	Rack:0 Slot:4 Local	1000EASX	1.200	1.026	A388000000038617C34PX		Off Line	2013-10-31
19	FRM220A-46	10.1.1.46	Rack:0 Slot:5 Local	1000EASX	1.300	1.026	RW2XKWBGYV33099E07		Off Line	2013-10-31
20	FRM220A-46	10.1.1.46	Rack:0 Slot:10 Local	5E1ET100S	1.300	1.226	437FB4C0EC93755FD100		Off Line	2013-10-31
21	FRM220A-46	10.1.1.46	Rack:0 Slot:11 Local	5E1ET100T	1.200	1.061	None		Off Line	2013-10-31
22	FRM220A-46	10.1.1.46	Rack:0 Slot:12 Local	5E1ET100T	1.200	1.061	None		Off Line	2013-10-31
23	FRM220A-46	10.1.1.46	Rack:0 Slot:13 Local	5E1ET100T	1.200	1.061	AL3T8C3QRBBRTK234CD		Off Line	2013-10-31
24	FRM220A-46	10.1.1.46	Rack:0 Slot:14 Local	5E1ET100S	1.300	1.226	7MG7D43TC3M392BWSW		Off Line	2013-10-31
25	FRM220A-46	10.1.1.46	Rack:0 Slot:15 Local	8E1ET100T	1.200	1.061	None		Off Line	2013-10-31
26	FRM220A-46	10.1.1.46	Rack:0 Slot:16 Local	8E1ET100S	1.200	1.061	6000357937260927632BC		Off Line	2013-10-31

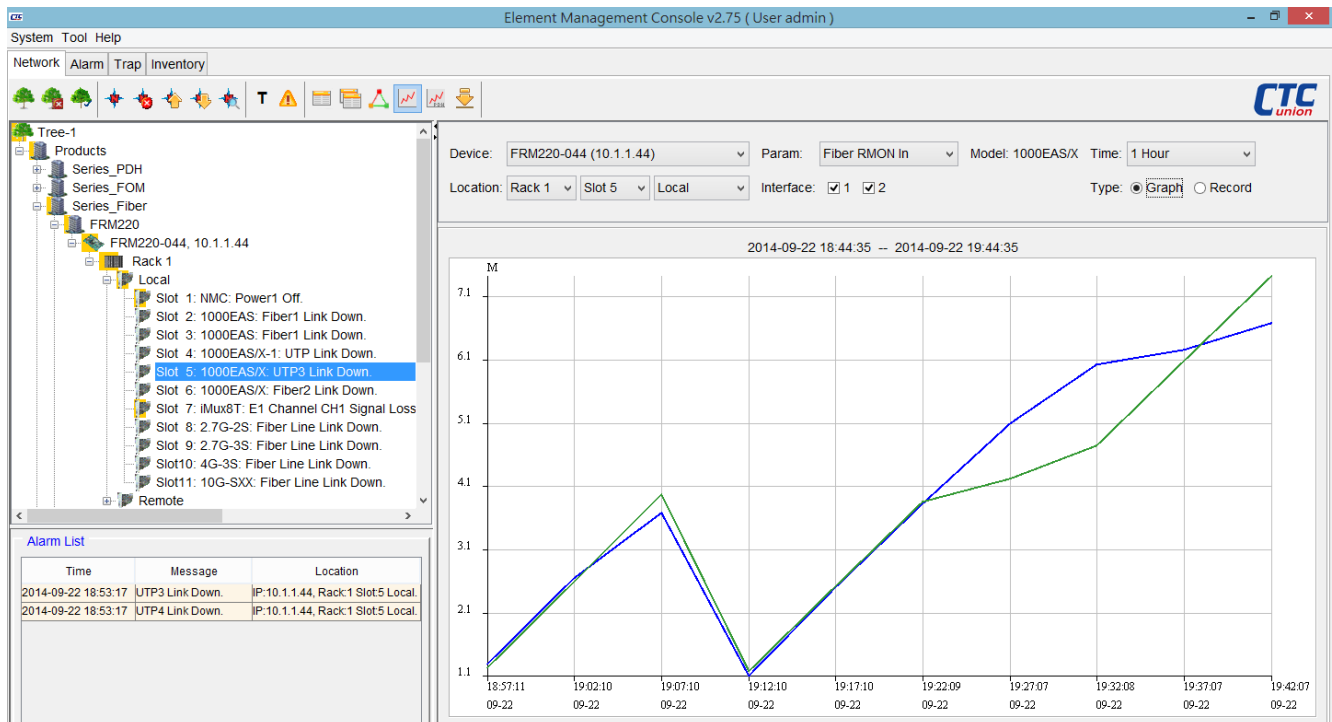
Inventory List

No.	Device	Type	On Line	Off Line	Total
1	FRM220				
2		NMC	1	0	1
3		1000M	1	0	1
4		1002ES	1	0	1
5		100IS_2	2	0	2
6		100M	2	0	2
7		10GE_TS	1	0	1
8		10G_SXX	1	0	1
9		3R10G_SS	1	0	1
10		8E1ET100S	2	0	2
11		EOE1G	2	0	2
12		Protection	1	0	1
13					
14	FRM220A				
15		1000EASX	0	4	4
16		1002ES	0	2	2
17		16E1ET100T	0	1	1
18		5E1ET100S	0	2	2
19		5E1ET100T	0	3	3
20		8E1ET100S	0	1	1
21		8E1ET100T	0	1	1
22		FSW103	0	1	1
23					

Inventory Summary

Performance Management

SmartView™ is able to monitor device performance parameters through polling of specific OIDs. Graphs of performance information (for example PDH PM data such as ES, UAS, etc. as well as hardware parameters such as fan speed, temperature, optical Tx/Rx power or RMON counters) can be generated on an X Y axis showing different trend data.



Device: FRM220-044 (10.1.1.44) Param: Fiber RMON In Model: 1000EAS/X Time: 1 Hour
 Location: Rack 1 Slot 5 Local Interface: 1 2 Type: Graph Record

2014-09-22 18:45:37 -- 2014-09-22 19:45:37

No.	Device	Address	Type	Location	Time	Param	Interface	Value
1	FRM220-044	10.1.1.44	FRM220	Rack:01 Slot:05 Local	2014-09-22 18:57:11	Fiber RMON In	1	1331040
2	FRM220-044	10.1.1.44	FRM220	Rack:01 Slot:05 Local	2014-09-22 18:57:11	Fiber RMON In	2	1270944
3	FRM220-044	10.1.1.44	FRM220	Rack:01 Slot:05 Local	2014-09-22 19:02:10	Fiber RMON In	1	2677120
4	FRM220-044	10.1.1.44	FRM220	Rack:01 Slot:05 Local	2014-09-22 19:02:10	Fiber RMON In	2	2621536
5	FRM220-044	10.1.1.44	FRM220	Rack:01 Slot:05 Local	2014-09-22 19:07:10	Fiber RMON In	1	3711872
6	FRM220-044	10.1.1.44	FRM220	Rack:01 Slot:05 Local	2014-09-22 19:07:10	Fiber RMON In	2	4005216
7	FRM220-044	10.1.1.44	FRM220	Rack:01 Slot:05 Local	2014-09-22 19:12:10	Fiber RMON In	1	1132512
8	FRM220-044	10.1.1.44	FRM220	Rack:01 Slot:05 Local	2014-09-22 19:12:10	Fiber RMON In	2	1210720
9	FRM220-044	10.1.1.44	FRM220	Rack:01 Slot:05 Local	2014-09-22 19:17:10	Fiber RMON In	1	2538752
10	FRM220-044	10.1.1.44	FRM220	Rack:01 Slot:05 Local	2014-09-22 19:17:10	Fiber RMON In	2	2547776
11	FRM220-044	10.1.1.44	FRM220	Rack:01 Slot:05 Local	2014-09-22 19:22:09	Fiber RMON In	1	3869792
12	FRM220-044	10.1.1.44	FRM220	Rack:01 Slot:05 Local	2014-09-22 19:22:09	Fiber RMON In	2	3869740
13	FRM220-044	10.1.1.44	FRM220	Rack:01 Slot:05 Local	2014-09-22 19:27:07	Fiber RMON In	1	5125632
14	FRM220-044	10.1.1.44	FRM220	Rack:01 Slot:05 Local	2014-09-22 19:27:07	Fiber RMON In	2	4259328
15	FRM220-044	10.1.1.44	FRM220	Rack:01 Slot:05 Local	2014-09-22 19:32:08	Fiber RMON In	1	6058112
16	FRM220-044	10.1.1.44	FRM220	Rack:01 Slot:05 Local	2014-09-22 19:32:08	Fiber RMON In	2	4776704
17	FRM220-044	10.1.1.44	FRM220	Rack:01 Slot:05 Local	2014-09-22 19:37:07	Fiber RMON In	1	6298752
18	FRM220-044	10.1.1.44	FRM220	Rack:01 Slot:05 Local	2014-09-22 19:37:07	Fiber RMON In	2	6116768
19	FRM220-044	10.1.1.44	FRM220	Rack:01 Slot:05 Local	2014-09-22 19:42:07	Fiber RMON In	1	6715360
20	FRM220-044	10.1.1.44	FRM220	Rack:01 Slot:05 Local	2014-09-22 19:42:07	Fiber RMON In	2	7452320

Setting Export Previous Next Refresh

Performance Records

Security Management

User Privilege

- The administrator can add necessary user logins with specific privileges, from Administrator to Operator and lastly to normal user.
- Radius Authentication. Supports authentication login provided by credentials stored on RADIUS server.

RADIUS Authentication

Enable RADIUS Authentication

RADIUS Server IP Address: 10.1.1.1 Port: 1812 Share Secret: secret

* Default administrator account 'admin' is not supported to be authenticated in RADIUS.
 * Local user accounts will be updated automatically when user authenticated in RADIUS.

User

No.	Name	Privilege	Description	Division	Phone	Address
1	admin	Administrator	Administrator	Admin Dep.		
2	admin1	Administrator	Administrator	Admin Dep.		
3	admin2	Administrator	Administrator	Admin Dep.		
4	op1	Operator	Operator	OP Dep.		
5	op2	Operator	Operator	OP Dep.		
6	user1	User	Normal User	User Dep.		
7	user2	User	Normal User	User Dep.		

User Privilege

User Activity

Provides viewing and clearing of the user login and configuration action logs. User client login & logouts is recorded including the client's source IP address. All activities performed on any Network Element are logged with time-stamping, the user making changes and the changes made.

ActionLog

Page: 1 / 2

No.	Time	Username	Agent Name	Action
1	2013-10-31 17:13:45	admin	FRM220-44	[f1000EASXUtp4LinkAlarmLocal.1.2] disable -> enable
2	2013-10-31 17:13:45	admin	FRM220-44	[f1000EASXUtp4ActiveLocal.1.2] disable -> enable
3	2013-10-31 17:13:32	admin	FRM220-44	[f1000EASXUtp4LinkAlarmLocal.1.2] enable -> disable
4	2013-10-31 17:13:32	admin	FRM220-44	[f1000EASXUtp4NegotLocal.1.2] auto -> manual
5	2013-10-31 17:13:32	admin	FRM220-44	[f1000EASXUtp4ActiveLocal.1.2] enable -> disable
6	2013-10-31 17:13:08	admin	FMUX04E-43	[e111Ch4lineCodeRemote.0] ami -> hdb3-b8zs
7	2013-10-31 17:13:08	admin	FMUX04E-43	[e111Ch3lineCodeRemote.0] ami -> hdb3-b8zs
8	2013-10-31 17:13:08	admin	FMUX04E-43	[e111Ch2lineCodeRemote.0] ami -> hdb3-b8zs
9	2013-10-31 17:13:08	admin	FMUX04E-43	[e111Ch1lineCodeRemote.0] ami -> hdb3-b8zs
10	2013-10-31 17:13:00	admin	FMUX04E-43	[e111Ch4lineCodeRemote.0] hdb3-b8zs -> ami
11	2013-10-31 17:13:00	admin	FMUX04E-43	[e111Ch3lineCodeRemote.0] hdb3-b8zs -> ami
12	2013-10-31 17:13:00	admin	FMUX04E-43	[e111Ch2lineCodeRemote.0] hdb3-b8zs -> ami
13	2013-10-31 17:13:00	admin	FMUX04E-43	[e111Ch1lineCodeRemote.0] hdb3-b8zs -> ami
14	2013-10-31 17:05:47	admin	FMUX04E-43	[clearErrorCounterRemote.0] off -> clear
15	2013-10-31 17:05:00	admin	FMUX04E-43	[clearErrorCounterRemote.0] off -> clear
16	2013-10-31 17:04:44	admin	FMUX04E-43	[clearErrorCounterLocal.0] off -> clear
17	2013-10-31 16:50:45	admin	FMUX04E-43	[clearErrorCounterRemote.0] off -> clear
18	2013-10-31 16:49:48	admin	FMUX04E-43	[clearErrorCounterRemote.0] off -> clear
19	2013-10-31 16:49:30	admin	FMUX04E-43	[utp3serviceLocal.0] on -> off
20	2013-10-31 16:49:10	admin	FMUX04E-43	[e111Ch4serviceRemote.0] on -> off
21	2013-10-31 16:49:09	admin	FMUX04E-43	[e111Ch3serviceRemote.0] on -> off
22	2013-10-31 16:49:09	admin	FMUX04E-43	[e111Ch2serviceRemote.0] on -> off
23	2013-10-31 16:49:09	admin	FMUX04E-43	[e111Ch1serviceRemote.0] on -> off
24	2013-10-31 16:48:57	admin	FMUX04E-43	[utp3serviceRemote.0] on -> off
25	2013-10-31 16:48:57	admin	FMUX04E-43	[utp2serviceRemote.0] on -> off
26	2013-10-31 16:48:57	admin	FMUX04E-43	[utp1serviceRemote.0] on -> off
27	2013-10-31 16:48:46	admin	FMUX04E-43	[rs232ServiceRemote.0] on -> off
28	2013-10-31 16:48:39	admin	FMUX04E-43	[phoneServiceRemote.0] on -> off
29	2013-10-31 16:46:20	admin	FMUX04E-43	[utp2serviceLocal.0] on -> off

User Activity

Requirements

SmartView™	Hardware (minimum)	Software	Operating System
SmartView™ Server	Intel Core2 or higher processor, 4GB RAM, HD >2GB (free).	JAVA JRE. SmartView™ Kit.	Windows 2008/2012 Server, Windows Vista, Win 7/8
SQL Database Server	Intel Core2 or higher processor, 4GB RAM, HD >2GB (free).	MS-SQL Server 2008/2012	Windows 2008/2012 Server, Windows Vista, Win 7/8
Workstation-Clients	Intel Core2 or higher processor, 4GB RAM, HD >2GB (free).	JAVA JRE. SmartView™ Kit.	Windows Vista, Win 7/8
All-In-One	Intel Core2 or higher processor, 8GB RAM, HD >20GB (free).	JAVA JRE. MS-SQL Server 2008/2012. SmartView™ kit.	Windows 2008/2012 Server, Windows Vista, Win 7/8

Ordering Information

SmartView™ Platform Server with Device Agents

Model Name	Description
SV1-AGT-50	SmartView™ Platform with 50 device agents
SV1-AGT-100	SmartView™ Platform with 100 device agents
SV1-AGT-200	SmartView™ Platform with 200 device agents
SV1-AGT-500	SmartView™ Platform with 500 device agents

Central EMS

Model Name	Description
Central EMS-01	Central Element Management System