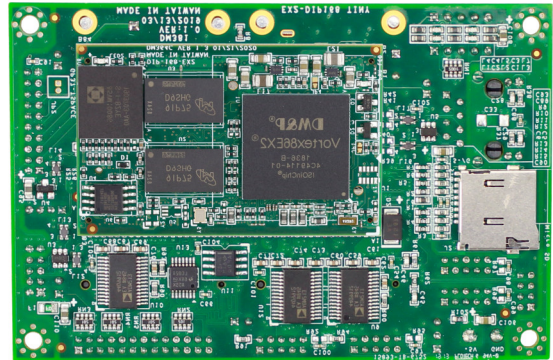
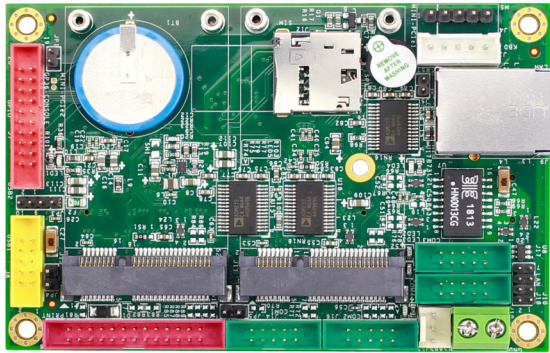


VEX2-6415



Specifications

CPU	DM&P Vortex86EX2 Processor 600MHz		
RAM	512MB/1GB DDR3 Onboard		
BIOS	Coreboot BIOS		
Expansion	Mini PCIe x 2		
LAN	Integrated 10/100Mbps Ethernet x 2		
Disk Support	Micro SD Card	Micro SD Card/eMMC(Option)	
I/O Interface	COM x 4 (2 x RS232/485)	16-bit GPIO x 1	USB (Version. 2.0) x 3
Connectors	2.54mm 5-pin pin header for Mouse x 1 2.00mm 2-pin pin header for Reset x 1 2.00mm 8-pin pin header for LAN x 1 2-pin header for Power connector x 1 SIM Card slot x 1	2.54mm 5-pin box header for Keyboard x 1 2.00mm 10-pin box header for USB x 1 2.00mm 10-pin box header for COM x 4 2.00mm 20-pin box header for Print x 1 Micro SD slot x1	2.00mm 20-pin box header for GPIO x 1 2.00mm 2-pin pin header for Console jumper x 1 2.00mm 4-pin pin header for USB x 1 RJ45 connector x 1
Power Requirement	5VDC @ 480mA		
Operating Temperature	-20°C - +70°C -40°C - +85°C (Option)		
Dimension	100 x 66mm (3.94 x 2.6 inches)		
Weight	75g		
O/S Support	Windows Embedded Compact 7 QNX	Windows Embedded CE6.0 FreeBSD	Linux DOS

Ordering Information

PART NO.	CPU Speed	DRAM (DDR3)	Disk Support	LAN	COM	USB	GPIO	Parallel	PS/2	MiniPCIe
VEX2-6415-4C4NE	600MHz	1GB	Micro SD Card x2	2	4	2	16-bit	1	2	2
VEX2-6415-4C3NE	600MHz	512MB	Micro SD Card x2	2	4	2	16-bit	1	2	2
VEX2-6415-4C4EE	600MHz	1GB	Micro SD Card 4GB eMMC	2	4	2	16-bit	1	2	2