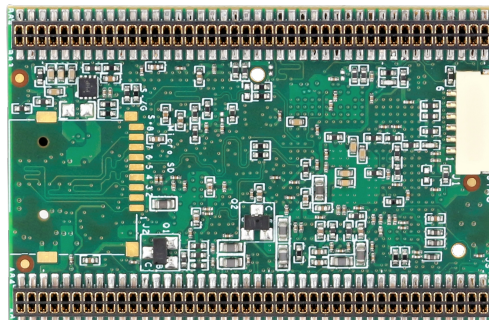
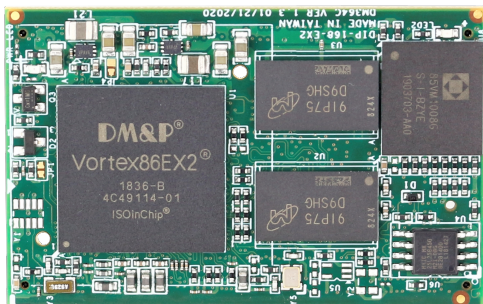


# VEX2-DIP168



## Specifications

Processor	DM&P SoC CPU Vortex86EX2 600MHz		
RAM	512MB/1GB DDR3 Onboard		
BIOS	Coreboot BIOS		
Bus	PCI Express x2	ISA	
LAN	Integrated 10/100Mbps Ethernet		
Disk Support	Micro SD/eMMC (Option)		
I/O Interface	USB v2.0 port x2		
I/O Configuration support up to 124 pins	GPIO up to 120-bit ADC 12-bit channel x16 CAN x2 ISA Printer Keyboard WatchingDog Timer	COM port x10 (max.) I <sup>2</sup> C x2 SPI x2 HD Audio SD/MMC LAN MTBF	
Power Requirement	Single Voltage +5VDC @ 360mA		
Operating Temperature	-20°C to +70°C -40°C to +85°C (Option)		
Dimension	35mm(L) x 55mm(W)		
Weight	15g		
O/S Support	DOS FreeBSD	Windows CE6/Embedded Compact 7 VxWorks	X-Linux QNX

## Ordering Information

PART NO.	CPU Speed	Disk Support	DRAM (DDR3L)	PCI-e	LAN	USB 2.0
VEX2-DIP168-3ME1	DM&P SoC Vortex86EX2 600MHz	Micro SD	512MB	2	1	2
VEX2-DIP168-4ME1			1GB			
VEX2-DIP168-3EE1		eMMC	512MB			
VEX2-DIP168-4EE1			1GB			