



WP-5231M-CE7 Quick Start

Version 1.0, February 2017

What's in the Box?

In addition to this guide, the package includes the following items:



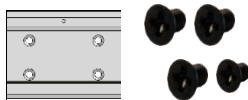
WP-5231M-CE7



Software Utility CD



A microSD card and a micro SD/SD adapter



M3x6L Screw * 4
44 mm DIN-Rail Clip * 1



Screw Driver
2.4 mm



Pin Terminal * 16

Technical Support

WP-5000-CE7 User Manual

CD:\WinPAC_AM335x\Wp-5231\Document\

http://ftp.icpdas.com/pub/cd/winpac_am335x/wp-5231/document/

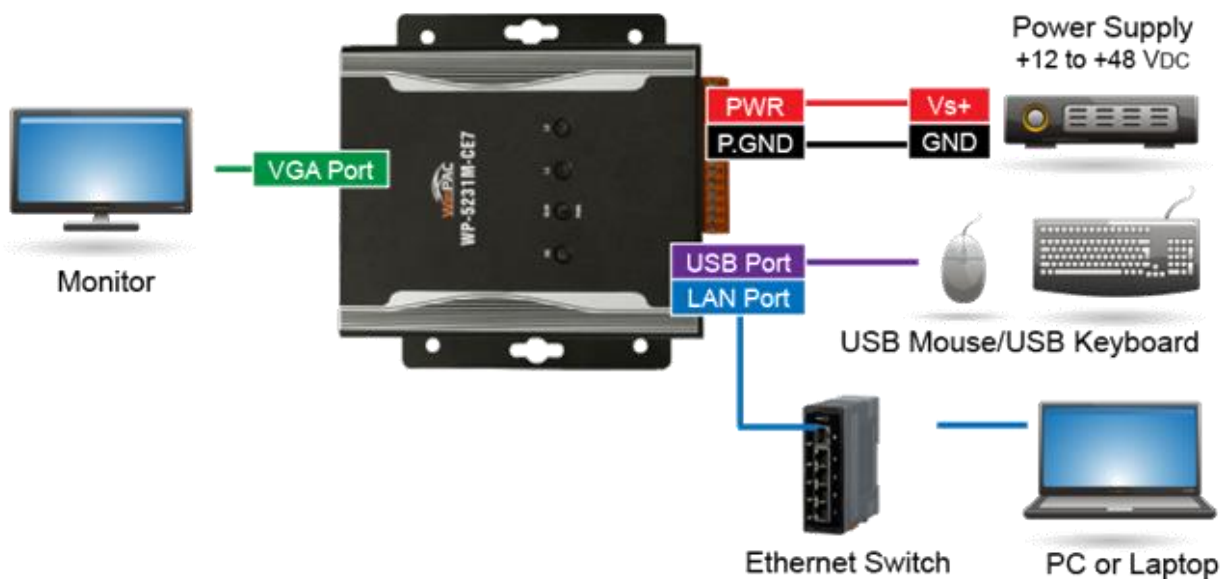
1 Configuring the Boot Mode

Before starting any installation, be sure that the switch is placed in the "0" position.



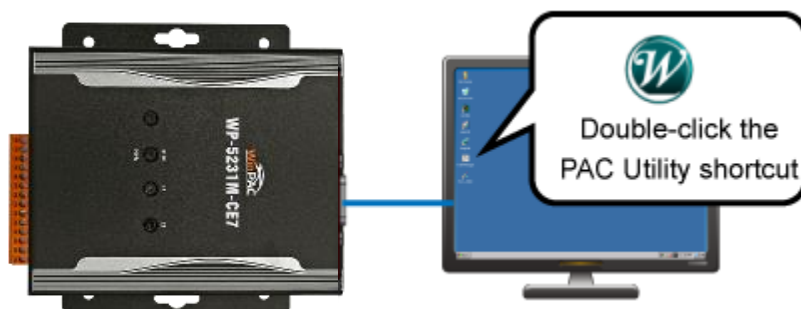
2 Connecting to PC, Monitor and Power Supply

- i. Connect the mouse or keyboard to the USB port.
- ii. Connect PC to the Ethernet port through an Ethernet switch.
- iii. Connect the monitor to the VGA port.
- iv. Connect the power supply (+12 to +48 V_{DC}) to PWR and GND terminals, and then turn on the WinPAC.

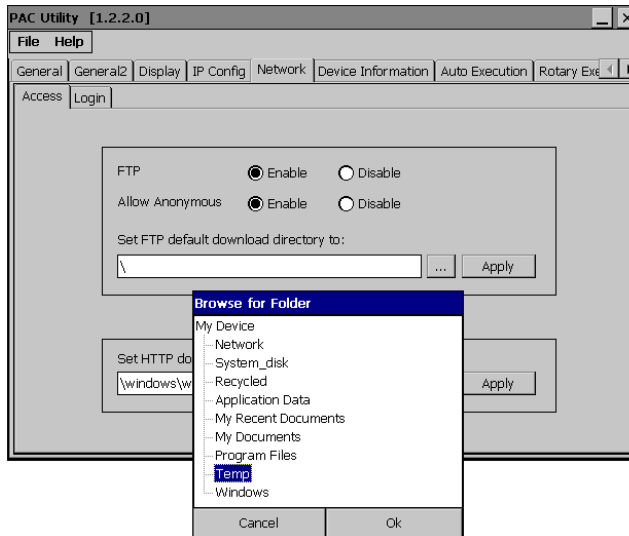


3 Using PAC Utility to Manage the WinPAC

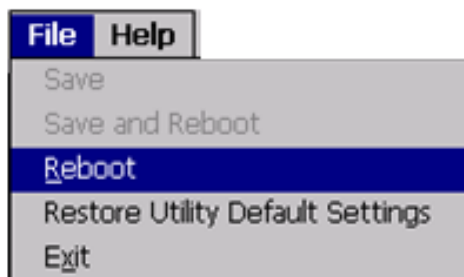
Step 1: Double-click the PAC Utility shortcut on the desktop



Step 2: Configure IP address (DHCP), FTP Server, Auto Execution files..., etc

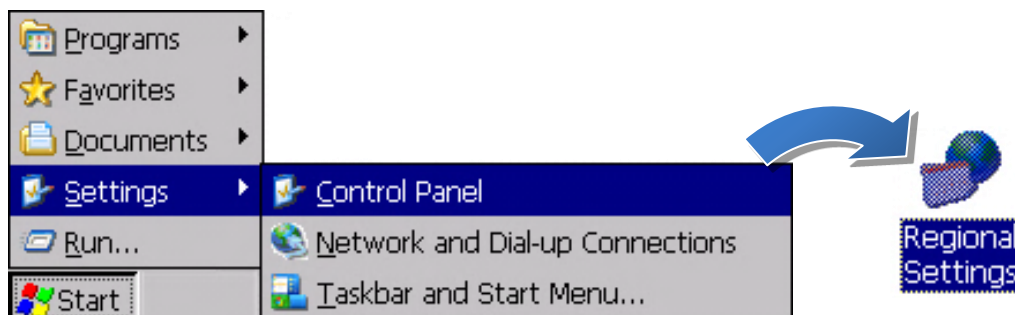


Step 3: Reboot the WinPAC for changes to take effect

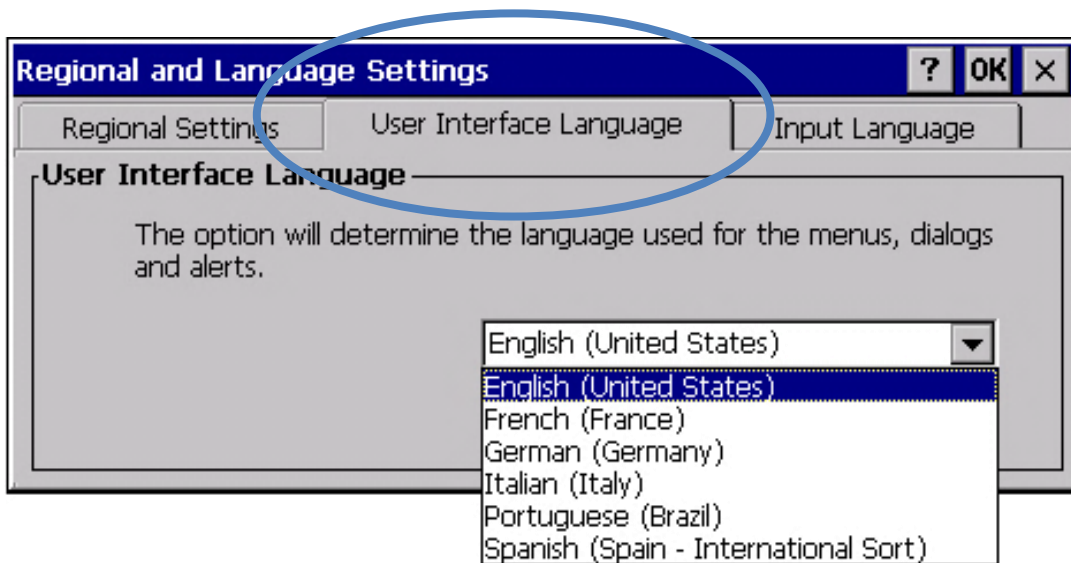


4 Changing the User Interface Language

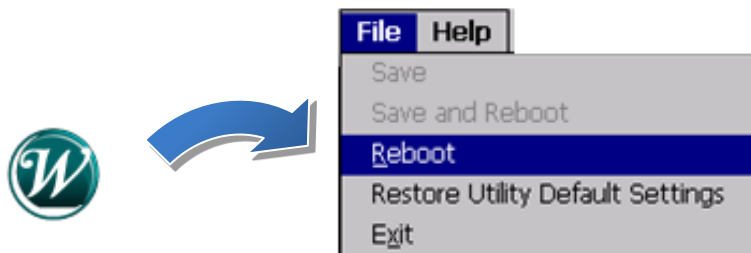
Step 1: Click Start menu, point to Settings, click Control Panel, and then click Regional Settings



Step 2: Click User Interface Language tab, choose to your local language, and then click OK



Step 3: Run the PAC Utility, and then reboot the WinPAC for changes to take effect



5

Inserting and Wiring to the XV-Board

XV-Board expansion I/O modules are used to expand the functions of the WP-5231M-CE7.

For more details about XV-Board expansion I/O modules, please refer to http://www.icpdas.com/root/product/solutions/hmi_touch_monitor/touchpad/xv-board_selection.html

