

UPort 1200/1400/1600 Series User's Manual

Version 9.2, October 2021

www.moxa.com/product



© 2021 Moxa Inc. All rights reserved.

UPort 1200/1400/1600 Series User's Manual

The software described in this manual is furnished under a license agreement and may be used only in accordance with the terms of that agreement.

Copyright Notice

© 2021 Moxa Inc. All rights reserved.

Trademarks

The MOXA logo is a registered trademark of Moxa Inc.
All other trademarks or registered marks in this manual belong to their respective manufacturers.

Disclaimer

Information in this document is subject to change without notice and does not represent a commitment on the part of Moxa.

Moxa provides this document as is, without warranty of any kind, either expressed or implied, including, but not limited to, its particular purpose. Moxa reserves the right to make improvements and/or changes to this manual, or to the products and/or the programs described in this manual, at any time.

Information provided in this manual is intended to be accurate and reliable. However, Moxa assumes no responsibility for its use, or for any infringements on the rights of third parties that may result from its use.

This product might include unintentional technical or typographical errors. Changes are periodically made to the information herein to correct such errors, and these changes are incorporated into new editions of the publication.

Technical Support Contact Information

www.moxa.com/support

Moxa Americas

Toll-free: 1-888-669-2872

Tel: +1-714-528-6777

Fax: +1-714-528-6778

Moxa Europe

Tel: +49-89-3 70 03 99-0

Fax: +49-89-3 70 03 99-99

Moxa India

Tel: +91-80-4172-9088

Fax: +91-80-4132-1045

Table of Contents

1. Introduction	1-1
Overview	1-2
ADDC™ (Automatic Data Direction Control) for RS-485	1-2
ARDC (Automatic Recovery Data Communication)	1-2
Ordering Information	1-2
Product Features	1-4
Product Specifications	1-4
Panel Layout	1-6
UPort 1250	1-6
UPort 1250I	1-6
UPort 1410/1450/1450I	1-6
UPort 1610-8/1650-8	1-6
UPort 1610-16/1650-16	1-7
Dimensions	1-7
UPort 1250	1-7
UPort 1250I	1-7
UPort 1410/1450	1-8
UPort 1450I	1-8
UPort 1610-8/1650-8	1-9
UPort 1610-16/1650-16	1-9
2. Driver Installation	2-1
UPort's USB Usage Limitation	2-2
Hardware Description	2-2
Connecting the Hardware	2-2
Installing the Windows Driver	2-5
Installing the Driver for the Converter	2-8
Installing the Driver for the Ports	2-11
Configuring the Ports	2-13
Uninstalling the UPort	2-21
Uninstalling the Driver	2-22
Installing the Mac Driver for macOS	2-23
Troubleshooting	2-28
Uninstall the UPort 1200/1400/1600 Series Driver	2-29
Installing the Linux Driver	2-29
Driver Files	2-29
Module Driver Configuration	2-30
Installing the Moxa Driver	2-30
Setting the Serial Parameters	2-31
Troubleshooting	2-31
Installing the Windows CE Driver	2-32
Installation With an Installation Package for Win CE 6.0	2-32
Installation With an Installation Package for Win CE 5.0	2-39
Removing the Moxa Win CE 5.0/ CE6.0 Driver	2-41
Installation With a CAB File	2-42
Removing the Moxa Win CE 5.0/ CE6.0 Driver	2-43
3. Serial Port Pin Assignments	3-1
DB9 Male RS-232 Port	3-1
DB9 Male RS-232/422/485 Port	3-1
Mini DB9F-to-TB* for RS-422/485 wiring	3-1

Introduction

The Moxa UPort 1200/1400/1600 are advanced USB-to-serial converters that add 2, 4, 8, or 16 serial ports to a PC through the PC's USB port. The UPort 1200/1400/1600 are compatible with both new and legacy RS-232 or RS-422/485 devices. These plug-and-play USB-to-serial converters are ideal for mobile, instrumentation, and point-of sale applications.

In this manual, we refer to the products in the series collectively as the **UPort 1200/1400/1600 Series**, or simply as the **UPort**. The UPort 1200/1400/1600 Series includes the following models:

UPort 1250	2-port RS-232/422/485 USB-to-serial converter
UPort 1250I	2-port RS-232/422/485 USB-to-serial converter with isolation protection
UPort 1410	4-port RS-232 USB-to-serial converter
UPort 1450	4-port RS-232/422/485 USB-to-serial converter
UPort 1450I	4-port RS-232/422/485 USB-to-serial converter with isolation protection
UPort 1610-8	8-port RS-232 USB-to-serial converter
UPort 1650-8	8-port RS-232/422/485 USB-to-serial converter
UPort 1610-16	16-port RS-232 USB-to-serial converter
UPort 1650-16	16-port RS-232/422/485 USB-to-serial converter

The following topics are covered in this chapter:

- **Overview**
- **ADDC™ (Automatic Data Direction Control) for RS-485**
- **ARDC (Automatic Recovery Data Communication)**
- **Ordering Information**
- **Product Features**
- **Product Specifications**
- **Panel Layout**
 - UPort 1250
 - UPort 1250I
 - UPort 1410/1450/1450I
 - UPort 1610-8/1650-8
 - UPort 1610-16/1650-16
- **Dimensions**
 - UPort 1250
 - UPort 1250I
 - UPort 1410/1450
 - UPort 1450I
 - UPort 1610-8/1650-8
 - UPort 1610-16/1650-16

Overview

UPort 1200/1400/1600 Series products are easy to install and use. After installing the drivers on your PC, connect the UPort to your computer, plug in your serial devices, and you're ready to go. Programming is NOT required, and you do not need to worry about IRQs, configuring a board, power requirements, or connection schemes.

UPort 1200/1400/1600 Series products are compliant with USB 1.1, and 2.0 specifications, and meet the 480 Mbps high-speed requirement of Hi-Speed USB 2.0. Using your computer's USB ports to connect serial devices reduces the total cost of ownership, investment in hardware, and long term management and integration costs.

The UPort 1250 supports bus power whereas the UPort 1410/1450 converters support both bus power and external power. The UPort 1250I, UPort 1600-8, and UPort 1600-16 converters support external power only. When using bus power, the UPort will get 500 mA through the laptop's or workstation's USB port. When an external power adapter or power cord is used, the UPort will only get 100 mA through the laptop or workstation's USB port.

ADDC™ (Automatic Data Direction Control) for RS-485

ADDC™ (Automatic Data Direction Control) makes it easier to manage 2-wire RS-485 half-duplex connections, eliminating the need for software interference. This means that it is not necessary to write extra code for Windows applications to control the half-duplex protocol. ADDC™ intelligence is built into the UPort 1200/1400/1600 USB-to-serial converters that support the RS-485 serial interface.

ARDC (Automatic Recovery Data Communication)

ARDC (Automatic Recovery Data Communication) makes it easier to auto recover data transmissions even if the cable gets unplugged accidentally. This means the user does not need to worry about reconfiguring complex settings to ensure smooth data transmissions. If the USB cable is accidentally unplugged, simply plug it back into the same port and the converter will automatically reconnect with the host and continue to transfer data. This feature not only reduces reconfiguration time, but also the probability of data loss.

Ordering Information

Package Checklist

Moxa's UPort 1200/1400/1600 products are shipped with the following items:

- 1 UPort 1200/1400/1600 USB-to-serial converter
- USB cable: CBL-USBA/B-100
- 100 to 240 VAC power adapter
- 1 power cord suitable for your region
- 1 serial adapter: mini DB9F-to-TB (for RS-232/422/485 model only)
- **WK-45-01**: 19" rackmount L brackets (2 L-shaped plates with 8 screws; for UPort 1600-16 series)
- Quick installation guide (printed)
- Warranty card

Optional Accessories (can be purchased separately)

Cables

- CBL-USBA/B-100: USB Type A to USB Type B cable, 100 cm
- CBL-F9M9-150: DB9 female to DB9 male serial cable, 150 cm
- CBL-F9M9-20: DB9 female to DB9 male serial cable, 20 cm
- CBL-RJ45SF9-150: RJ45 to DB9 female shielded serial cable, 150 cm
- ADP-RJ458P-DB9: DB9 female to RJ45 connector

Connectors

- Mini DB9F-to-TB: DB9 female to terminal block connector
- ADP-RJ458P-DB9F-ABC01: DB9 female to RJ45 connector

Mounting Kits

DIN-rail kit/Wall-mounting kit

For the UPort 1200

DK-UP1200: DIN-rail/wall-mounting kit that includes 2 wall-mounting plates with 6 screws (WK-35-02) and 2 DIN-rail plates with 4 screws (DK35A, 35-mm DIN-rail mounting clips)



For the UPort 1400/1600-8

DK-UP1400: DIN-rail/wall-mounting kit that includes 2 wall-mounting plates with 6 screws (WK-35-01), and 2 DIN-rail plates with 4 screws (DK35A, 35 mm DIN-rail mounting clips)



DK-UP-14168: DIN-rail kit with 2 plates for smart switch (89 x 19 mm) and 6 screws (FMS M3 x 5 mm); for the **UPort 1400 (V1.5.0)** and **UPort 1600-8 (V1.4.0)** models.

WK-UP-14168: Wall-mounting kit with 2 plates (35 x 44 mm) and 6 screws (FMS M3 x 4 mm); for the **UPort 1400** and **UPort 1600- 8** models.

For the UPort 1600-16

- **WK-45-01:** 19" rackmount L brackets; 2 L-shaped plates with 8 screws



NOTE Please notify your sales representative if any of the above items is missing or damaged.

Product Features

UPort 1200/1400/1600 Series products have the following features:

- Hi-Speed USB 2.0 supported (up to 480 Mbps)
- Additional I/O or IRQ not required
- Serial transmission speed up to 921.6 Kbps
- 128-byte FIFO and on-chip H/W, S/W flow control
- Windows Real COM Drivers
- Mac Drivers
- Linux Real TTY Drivers
- The UPort 1250 supports bus power; the UPort 1410/1450 supports both bus power and external power
- Suitable for 4-wire RS-422/485 and 2-wire RS-485 applications
- Easy maintenance with LED display
- IP30, rugged metal case
- COM port assignments maintained across different PCs
- Mini DB9 female to terminal block attachment for easy wiring
- Wall-mount and DIN-rail accessories available

Product Specifications

USB

Compliance: USB 1.1/2.0 compliant

Connector: USB type B

Speed: 480 Mbps (Hi-Speed USB) and 12 Mbps (Full-Speed USB)

Serial Interface

Number of Ports:

UPort 1200: 2

UPort 1400: 4

UPort 1600-8: 8

UPort 1600-16: 16

Serial Standards:

UPort 1410/1610: RS-232

UPort 1250/1250I/1450/1450I/1650: RS-232/422/485

Connectors: DB9 male

Serial Line Protection

Optical Isolation Protection: 2 KV (UPort 1250I/1450I only)

Performance

Baudrate: 50 bps to 921.6 Kbps

Serial Communication Parameters

Data Bits: 5, 6, 7, 8

Stop Bits: 1, 1.5, 2

Parity: None, Even, Odd, Space, Mark

Flow Control: RTS/CTS, XON/XOFF

FIFO: 128 bytes

Serial Signals

RS-232: TxD, RxD, RTS, CTS, DTR, DSR, DCD, GND

RS-422: TxD+(B), TxD-(A), RxD+(B), RxD-(A), GND

RS-485-4w: TxD+(B), TxD-(A), RxD+(B), RxD-(A), GND

RS-485-2w: Data+(B), Data-(A), GND

RS-485 Data Direction: ADDC™ (Automatic Data Direction Control)

Driver Support

Windows:

10/8.1/8/7 (x86.x64), Vista/ME/XP/98/95

Server 2019, Server 2016, 2012 R2, 2012, 2008 R2, 2008, 2003, 2000, NT

macOS:

11.2 / 11.1 / 11.0 / 10.15 / 10.14 / 10.13 / 10.12

Linux:

Kernel 5.x / Kernel 4.x / Kernel 3.x / Kernel 2.6.x / Kernel 2.4.x

Win CE:

Win CE5.0/CE6.0

Note: Please refer to Moxa's website for the latest driver support information.

Physical Characteristics

Housing: SECC sheet metal (1 mm), IP30 protection

Weight:

- UPort 1200:
Product only: 180 g (0.40 lb)
- UPort 1400:
Product only: 720 g (1.59 lb)
- UPort 1600-8:
Product only: 835 g (1.84 lb)
Packaged: 1435 g (3.16 lb)
- UPort 1600-16:
Product only: 2475 g (5.45 lb)

Environmental Limits

Operating Temperature: 0 to 55°C (32 to 131°F)

Operating Humidity: 5 to 95% RH

Storage Temperature: -20 to 75°C (-4 to 167°F)

Regulatory Approvals: EN55032 Class A, EN55024, EN61000-3-2, EN61000-3-3, EN61000-4-2, EN61000-4-3, EN61000-4-4, EN61000-4-5, EN61000-4-6, EN61000-4-8, EN61000-4-11 FCC Part 15 Class A, UL, CUL, TÜV

Power Requirements

Power Consumption:

- Bus power:
 - UPort 1250: 360 mA @ 5 VDC
 - UPort 1410/1450: 180 mA @ 5 VDC
- 12 to 48 VDC external power:
 - UPort 1250I: 200 mA @ 12 VDC
 - UPort 1410: 180 mA @ 12 VDC
 - UPort 1450: 260 mA @ 12 VDC
 - UPort 1450I: 360 mA @ 12 VDC
 - UPort 1610-8: 230 mA @ 12 VDC
 - UPort 1650-8: 340 mA @ 12 VDC
 - UPort 1610-16: 130 mA @ 100 VAC
 - UPort 1650-16: 150 mA @ 100 VAC

NOTE The operating temperature of the power adapter in the box (if applicable) is from 0 to 40°C. If your application is out of this range, please use a power adapter supplied by UL Listed External Power Supply. (The power output meets SELV and LPS and is rated 12 to 48 VDC; the minimum current is 92.4 mA).

Warranty

Warranty Period: 5 years

Details: See www.moxa.com/warranty

Panel Layout

UPort 1250



UPort 1250I



UPort 1410/1450/1450I



UPort 1610-8/1650-8

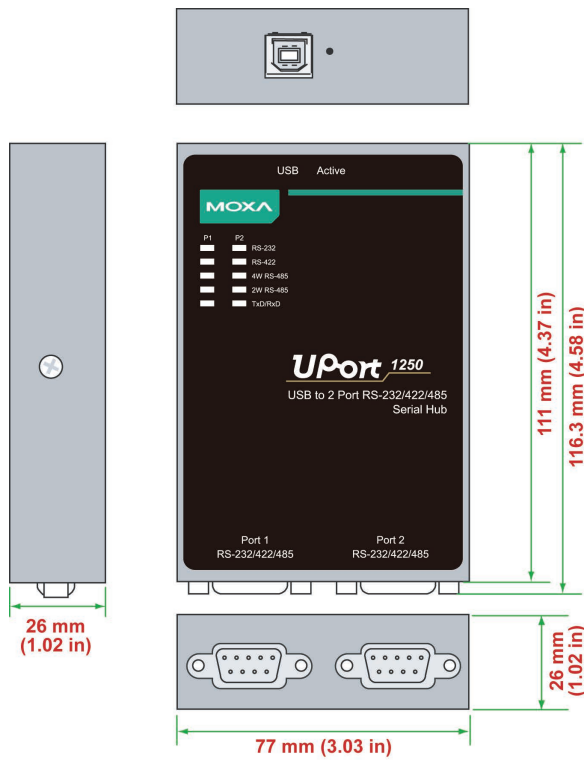


UPort 1610-16/1650-16

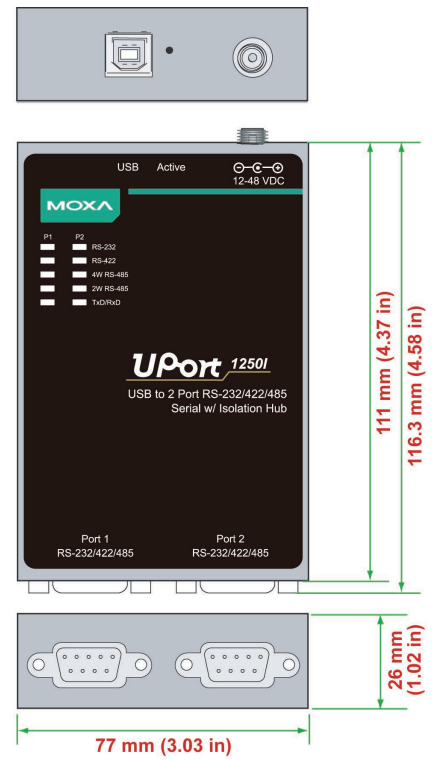


Dimensions

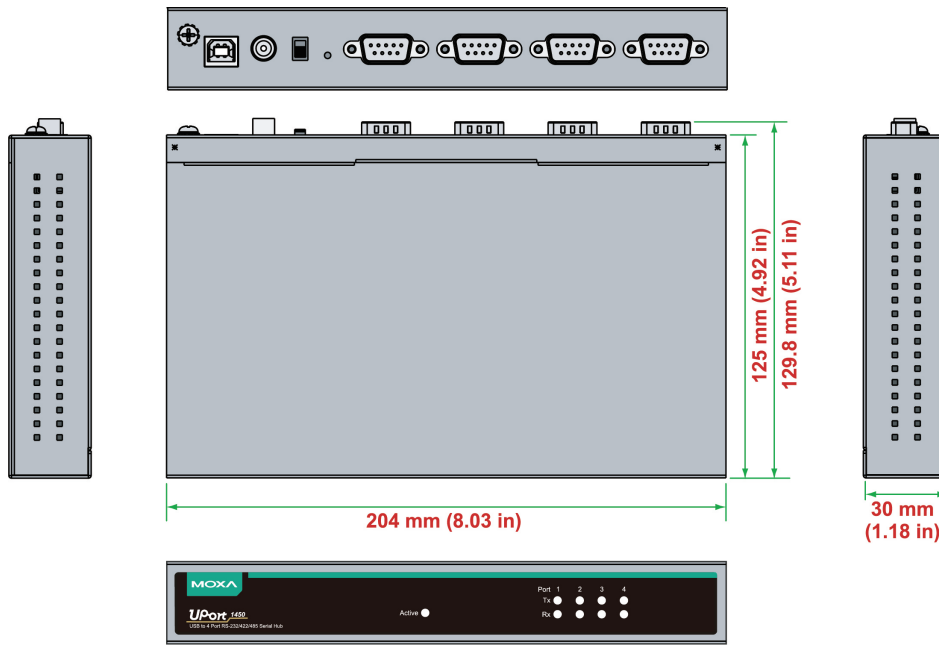
UPort 1250



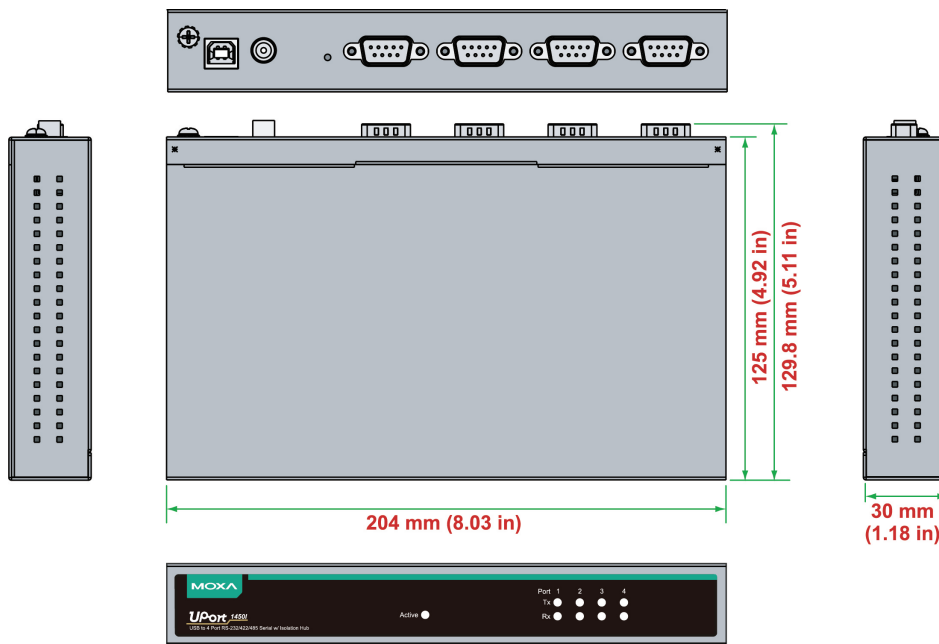
UPort 1250I



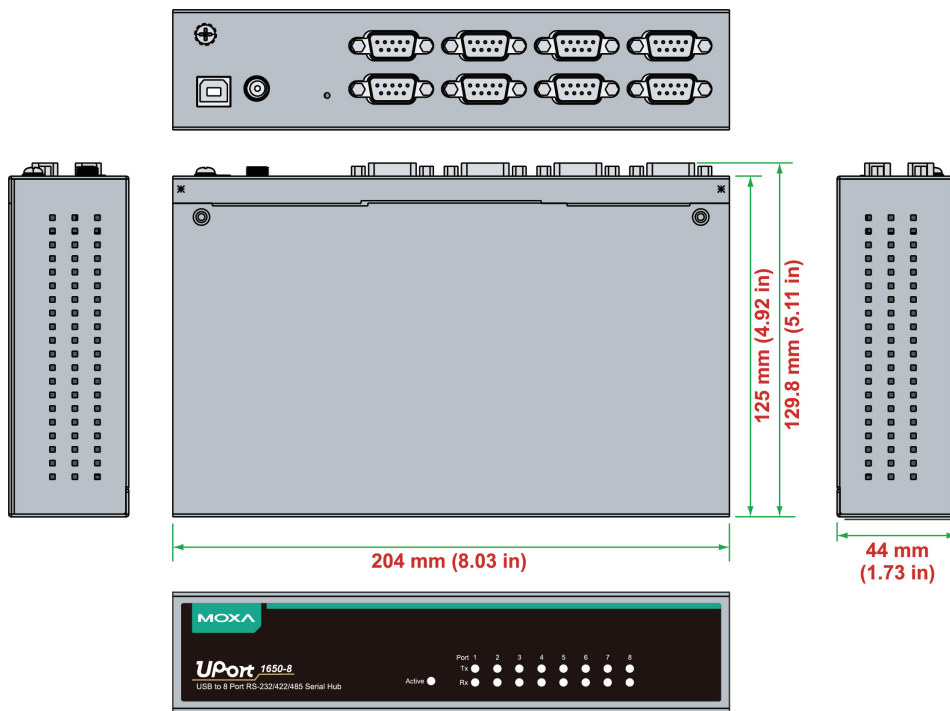
UPort 1410/1450



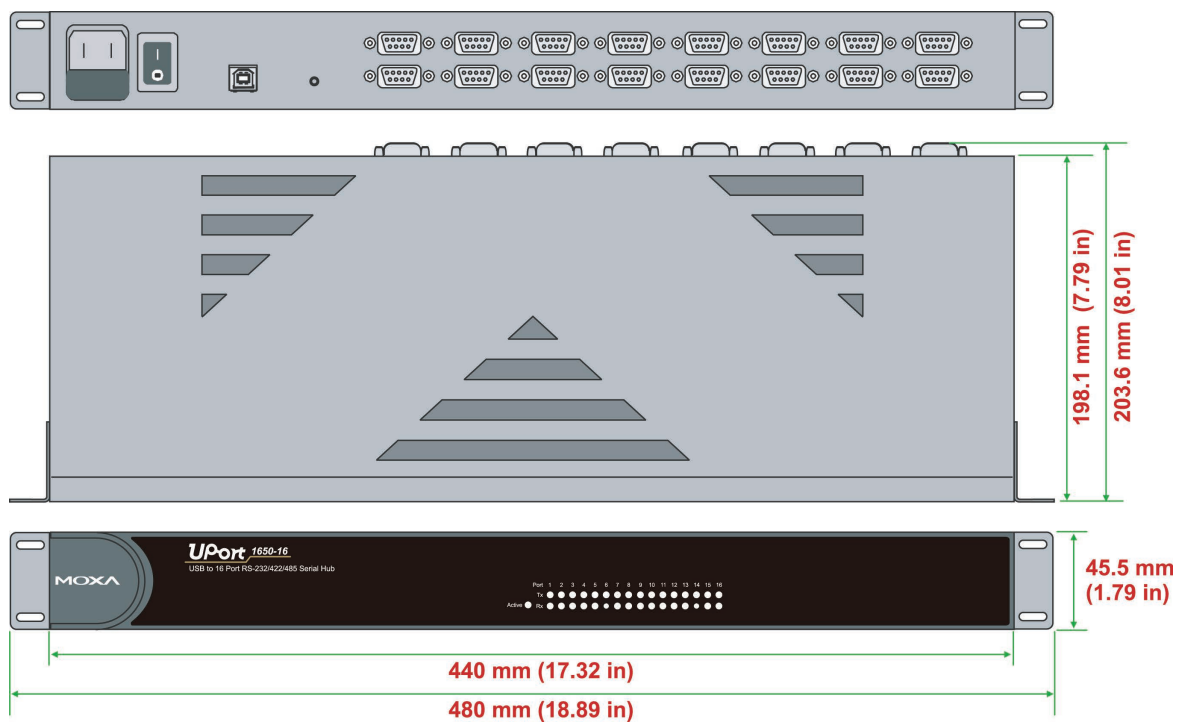
UPort 1450I



UPort 1610-8/1650-8



UPort 1610-16/1650-16



Driver Installation

In this chapter, we use Windows XP to illustrate how to install the UPort 1200/1400/1600 USB-to-serial converters. The procedures for other Windows platforms are essentially the same.

We recommend installing the UPort driver first, before connecting the UPort to your computer's USB port.

The following topics are covered in this chapter:

❑ **UPort's USB Usage Limitation**

- Hardware Description
- Connecting the Hardware

❑ **Installing the Windows Driver**

- Installing the Driver for the Converter
- Installing the Driver for the Ports
- Configuring the Ports
- Uninstalling the UPort
- Uninstalling the Driver

❑ **Installing the Mac Driver for macOS**

- Troubleshooting
- Uninstall the UPort 1200/1400/1600 Series Driver

❑ **Installing the Linux Driver**

- Driver Files
- Module Driver Configuration
- Installing the Moxa Driver
- Setting the Serial Parameters
- Troubleshooting

❑ **Installing the Windows CE Driver**

- Installation With an Installation Package for Win CE 6.0
- Installation With an Installation Package for Win CE 5.0
- Removing the Moxa Win CE 5.0/ CE6.0 Driver
- Installation With a CAB File
- Removing the Moxa Win CE 5.0/ CE6.0 Driver

UPort’s USB Usage Limitation

1. A maximum of 4 UPort converters can be connected to one PC host. Connecting more than 4 UPort converters will strain system resources and potentially destabilize the computer.
2. We recommend connecting the UPort directly to your PC’s USB port.
3. Although your UPort supports USB 1.1, we recommend using a USB 2.0 host controller or hub for the best and most stable performance.

Hardware Description

We recommend installing the driver before connecting the UPort to your PC. Some UPort models require an external power adapter or cord, and other models support both external and bus power.

	UPort 1250	UPort 1250I	UPort 1410/1450	UPort 1450I	UPort 1600-8	UPort 1600-16
Bus Power	✓	–	✓	–	–	–
External Power (adapter)	–	✓	✓	✓	✓	–
External Power (cord)	–	–	–	–	–	✓

If you want to use bus power with the UPort 1410/1450, set the DIP switch to **bus** when you connect the USB cable between the host PC and the UPort 1410/1450. The UPort 1450I requires external power.

Using an External Power Source

The UPort 1250I, UPort 1450/1450I, and UPort 1600-8 come with a power adapter for connecting to an external AC power source. UPort 1410 users can purchase a power adapter separately. The UPort 1600-16 comes with a power cord as a standard accessory. If the power is properly supplied, the Active LED will glow a solid green.

Buzzer (UPort 1400 and 1600 only)

The UPort 1400 and UPort 1600 will sound the built-in buzzer twice when the power is turned on. You will also hear the buzzer when using the **Locate** function from the driver property page of the UPort utility.

Connecting the Hardware

Please install the driver before connecting the UPort series to your PC's USB port. See the previous section for details.

Connecting to a Serial Device

Use the proper serial cables to connect your serial devices to the UPort’s serial ports, which support the RS-232 and/or RS-422/485 interface. The UPort’s serial ports use DB9 male connector with standard pin assignment. Please see Chapter 3 for detail pin assignment.

LED Indicators

UPort 1250/1250I

There are five LEDs per port for indicating the status of the ports. The LEDs are listed under P1 and P2.

LED Name	LED Color	LED Function
Active	Red	Power is on
	Off	Power is off, or power error condition exists
RS-232	Red	Port is configured for RS-232 operation
RS-422	Red	Port is configured for RS-422 operation
4W RS-485	Red	Port is configured for 4-wire RS-485 operation
2W RS-485	Red	Port is configured for 2-wire RS-485 operation
TxD/RxD	Orange	Port is receiving data from attached device
	Green	Port is transmitting data to attached device
	Off	No data is being transmitted or received

UPort 1400/1600

There are five LEDs per port for indicating the status of the ports. The LEDs are listed under P1, P2, P3, etc.

LED Name	LED Color	LED Function
Active	Red	Power is on; when the firmware is ready, the LED will turn green If the device's LED remains red, it means the firmware is not ready, and the device cannot work properly
	Green	The device is ready
	Flashing green	The device is located by the Locate function on the host
	Off	Power is off, or power error condition exists
Tx/Rx	Orange	Port is receiving data from attached device
	Green	Port is transmitting data to attached device
	Off	No data is being transmitted or received

Adjustable Pull High/low Resistors for the RS-485 Port

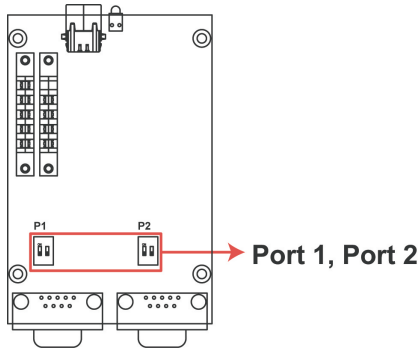
The UPort uses DIP switches to set the pull high/low resistor values for each serial port.

To set the pull high/low resistors to 150 K Ω , make sure both of the assigned DIP switches are in the OFF position.

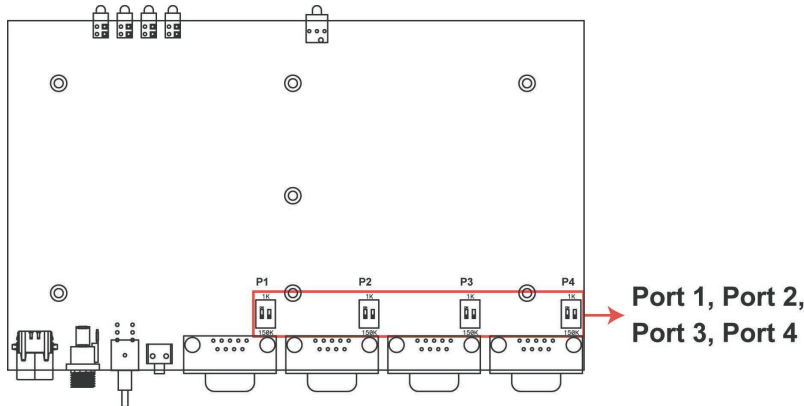
To set the pull high/low resistors to 1 K Ω , make sure both of the assigned DIP switches are in the ON position. This is the default setting.

SW	1	2
		Pull High
ON	1 K Ω	1 K Ω
OFF	150 K Ω	150 K Ω

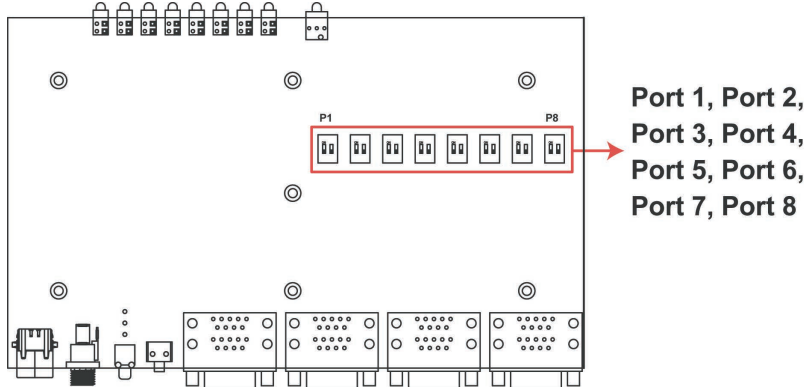
UPort 1200 DIP Switches



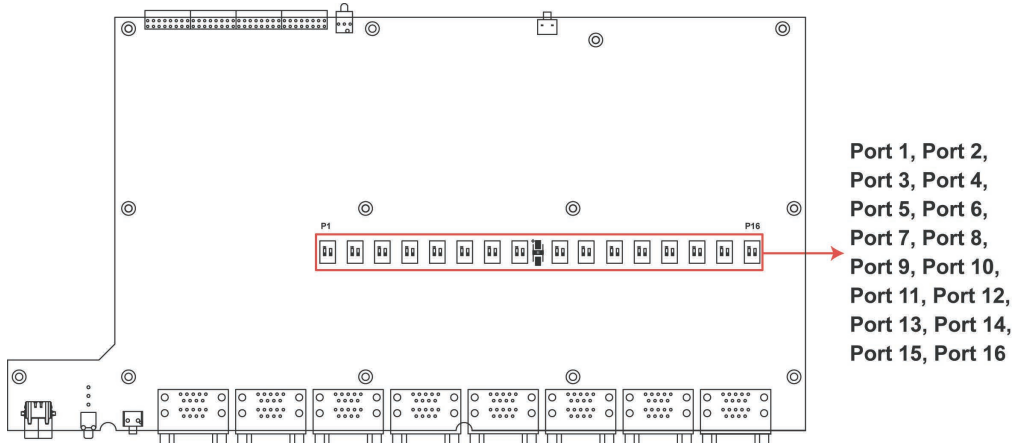
UPort 1400 DIP Switches



UPort 1600-8 DIP Switches

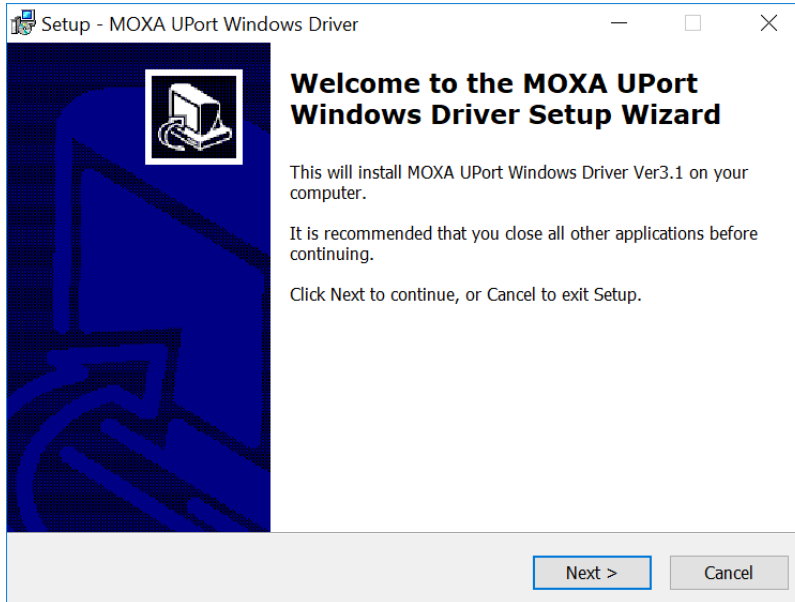


UPort 1600-16 DIP Switches

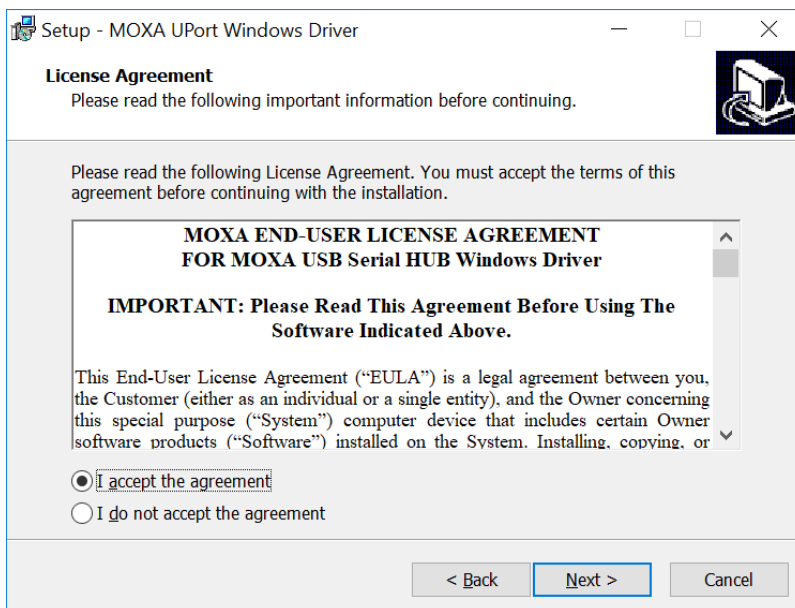


Installing the Windows Driver

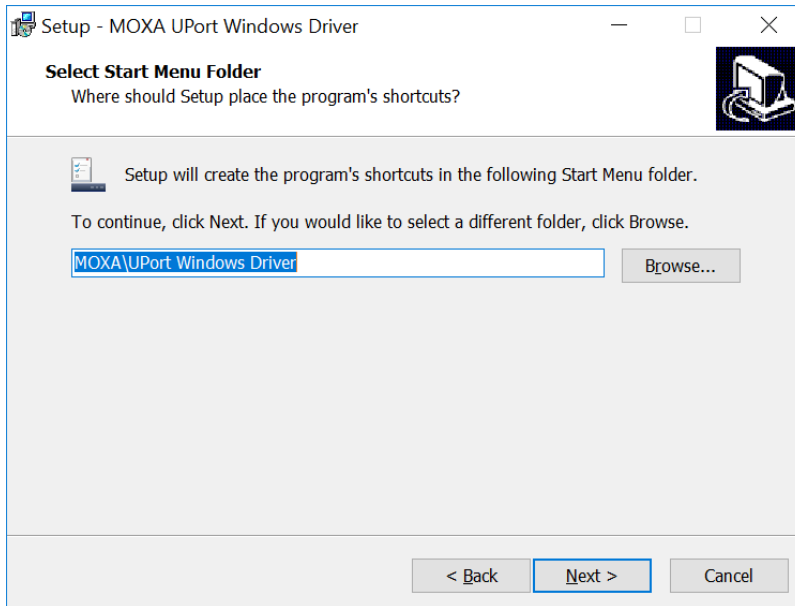
1. Connect the UPort to the PC using the USB cable.
2. After turning your PC's power on, Windows will automatically detect the UPort.
3. Run the Setup program that you may find on Moxa's support website <http://www.moxa.com/support/>. Click **Next** to start installing the driver.



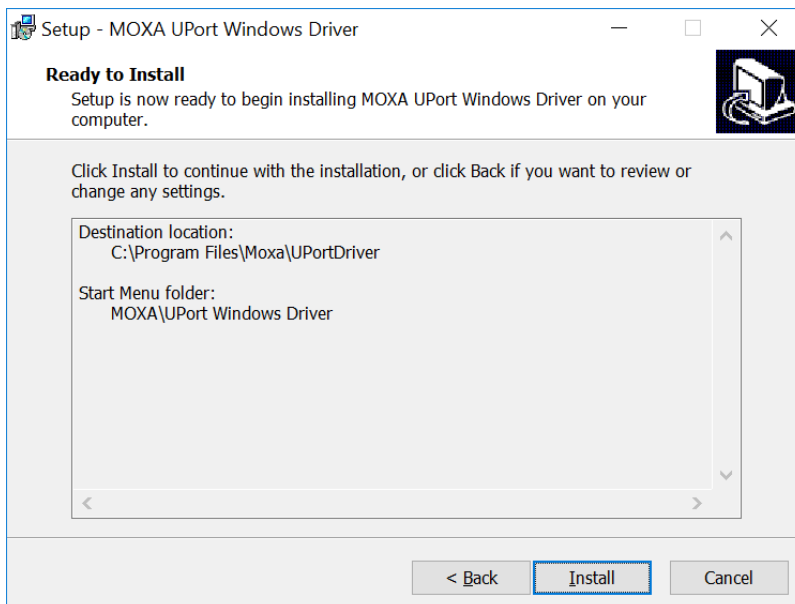
4. Read and accept the agreement. Click **Next** to set the indicated folder.



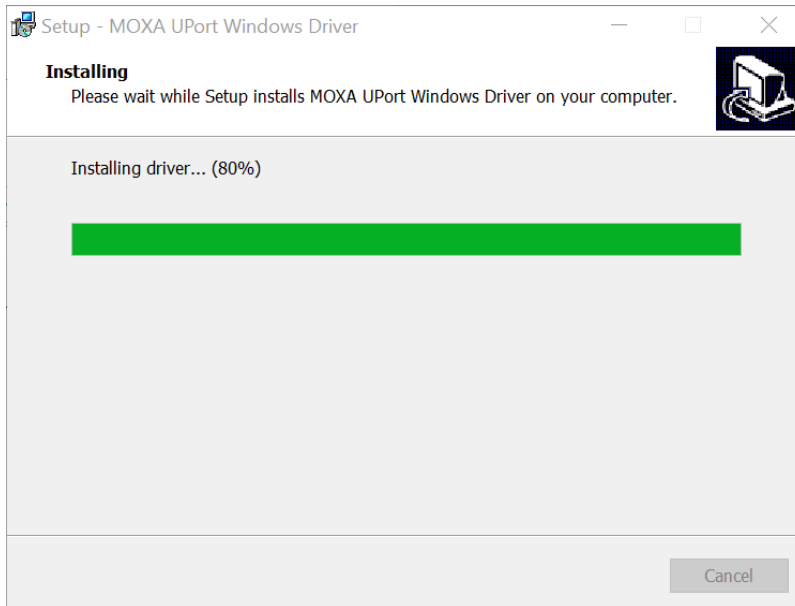
- 5. Set **Start Menu Folder** location.



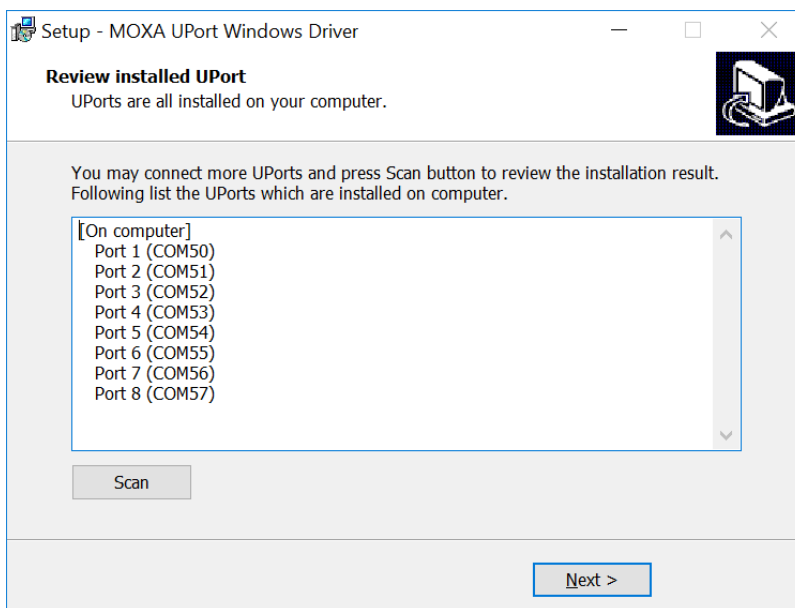
- 6. Click **Install** to proceed with the installation.



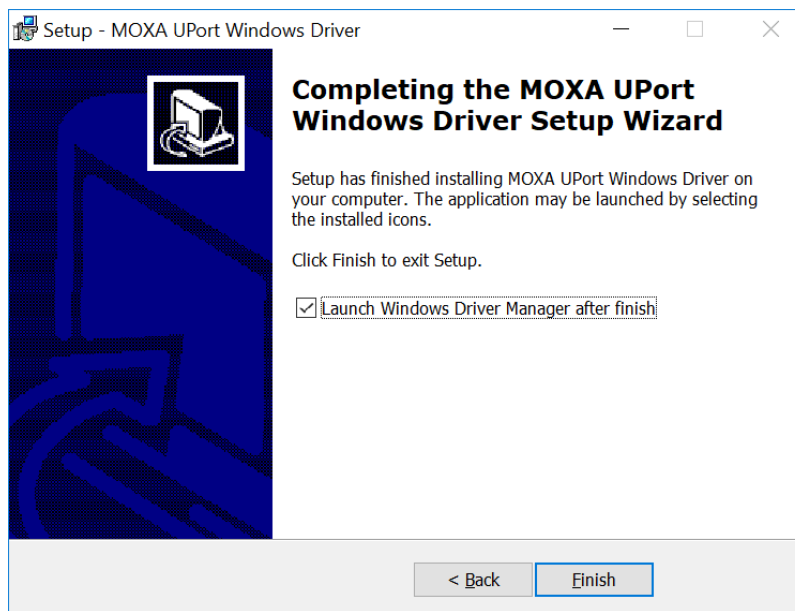
7. The installation will take a few minutes to complete.



8. After the driver has been installed successfully, you can click **Scan** to review the installation results if the UPort is connected to your computer.



9. Check Launch Windows Driver Manager after finish to configure the UPort after quitting the driver installer.



Installing the Driver for the Converter

NOTE The operating system will automatically detect the UPort when you plug it into one of your computer's USB ports. If you have installed the latest UPort driver, the UPort and the UPort's serial port will be installed automatically. If the UPort and the serial ports are not installed automatically, follow the instructions below.

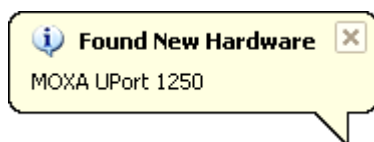
Case 1: The UPort Driver Is Certified

If the UPort driver that you installed has been certified by Microsoft, the UPort and the UPort's serial ports will be installed automatically when you plug the UPort into your computer's USB port.

Case 2: The UPort Driver Is NOT Certified

If the UPort driver that you installed has not been certified by Microsoft, then plugging the driver into your computer's USB port will activate the UPort installation program. The first part of the installation procedure installs the software for the UPort itself (the second part of the procedure installs the serial ports).

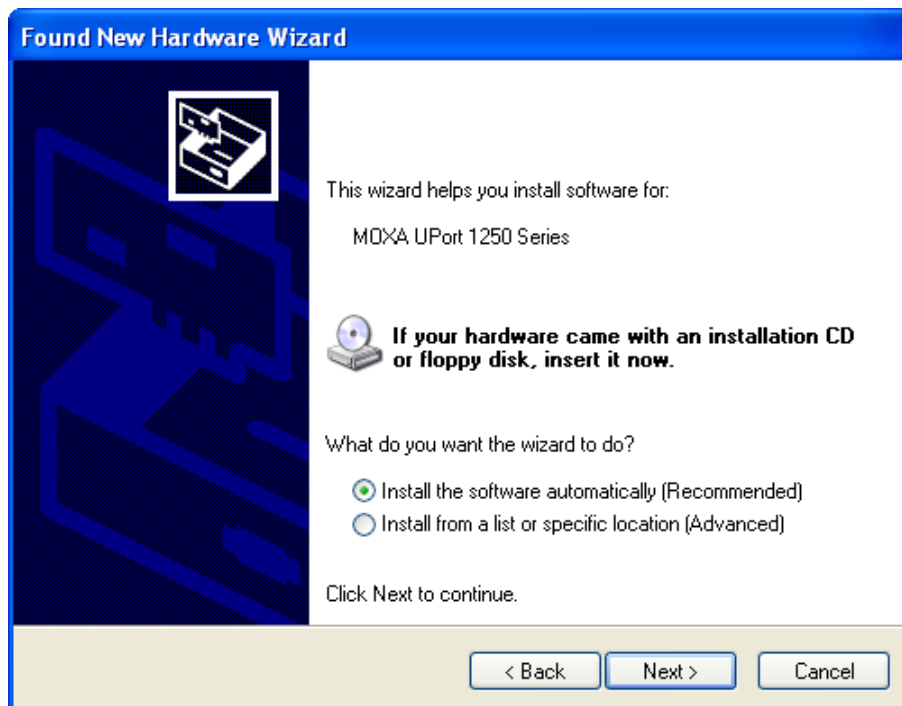
1. After connecting the USB cable from the UPort to the host PC, Windows XP will automatically detect the new UPort, and the Found New Hardware balloon will open in the bottom right corner of the Windows desktop.



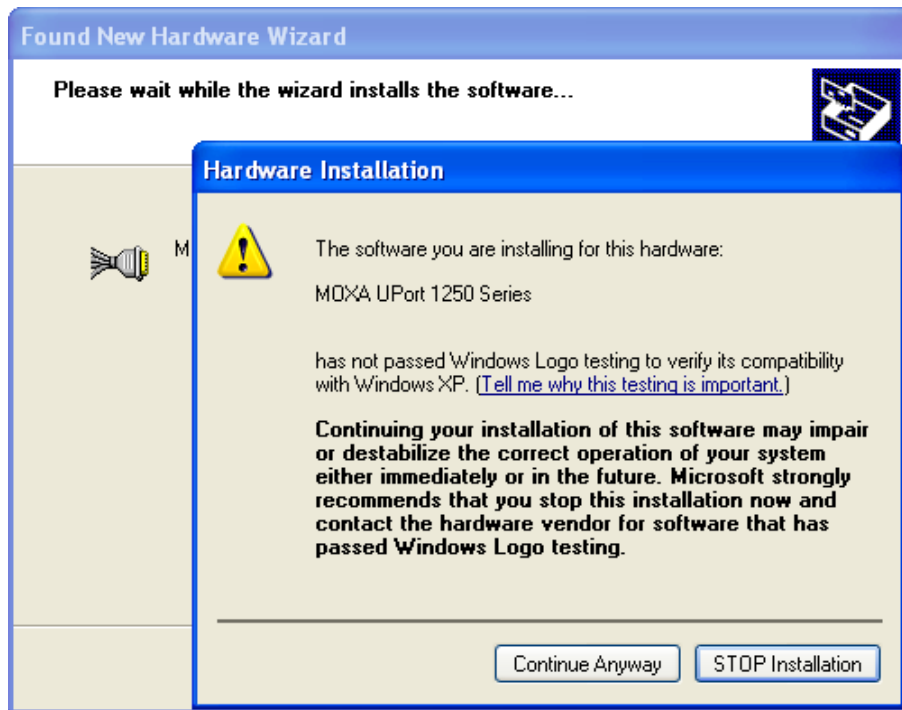
2. Select **No**, not at this time. Click **Next** to start the installation.



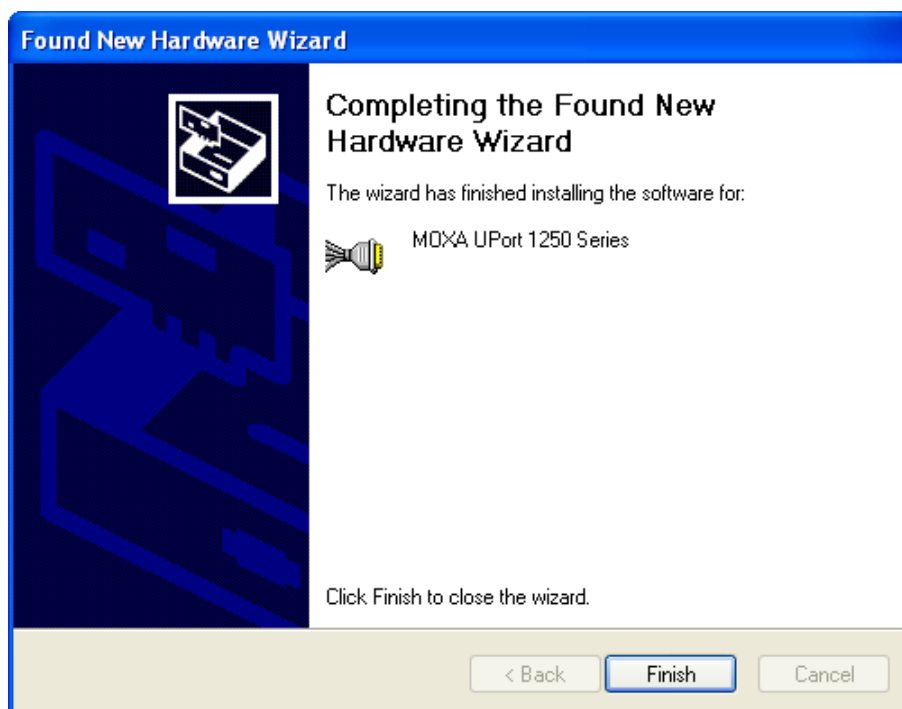
3. Select **Install the software automatically** (Recommended), and then click **Next** to continue.



4. Wait while the installation wizard searches for the correct drivers. The next window that opens cautions you that although this software has not passed Windows logo testing, this driver has already been tested and shown that it can support the Windows operating system. Click **Continue Anyway** to proceed.



5. The next window shows the model name of the board, and indicates that Windows has completed the driver installation. Click **Finish** to proceed with the rest of the installation procedure.



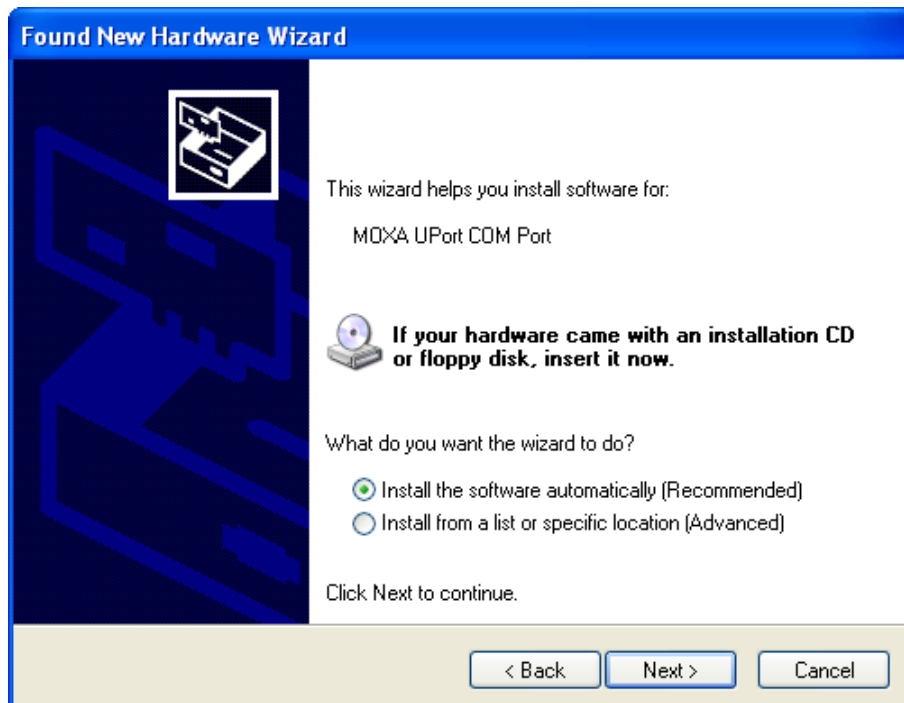
6. Open Windows Device Manager to check that the installation was successful. The UPort USB-to-serial converter should appear under Multi-port serial adapters.

Installing the Driver for the Ports

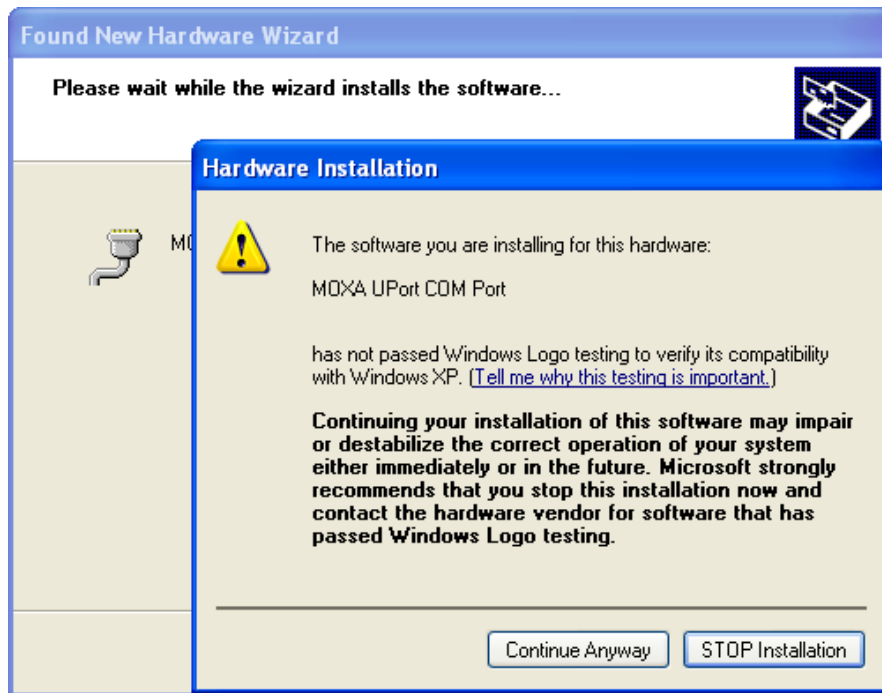
1. The Found New Hardware Wizard window will open to help you install the driver. This window will offer to connect to the Windows update site to search for a driver. Select **No, not at this time** and then click **Next** to continue.



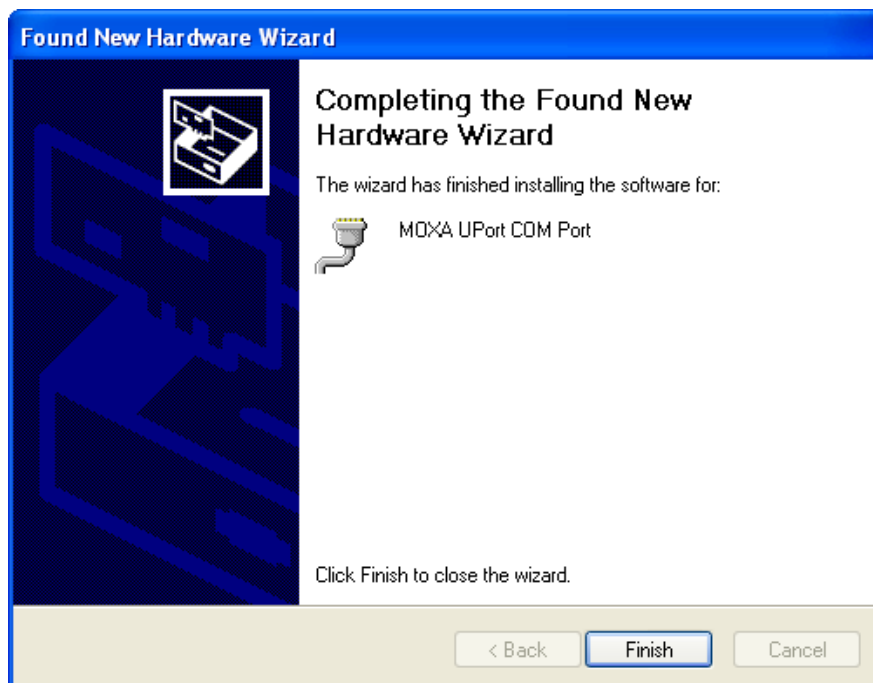
2. Select **Install the software automatically** (Recommended), and then click **Next** to continue.



- Wait while the installation wizard searches for the correct drivers. The next window that opens cautions you that although this software has not passed Windows logo testing, this driver has already been tested and shown that it can support the Windows operating system. Click **Continue Anyway** to proceed.

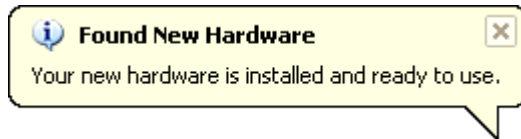


- Wait while the driver software is installed.
- After all files have been copied to the system, the **Completing the Found New Hardware Wizard** window will open to indicate that it has finished installing driver. Click **Finish** to proceed with the rest of the installation.

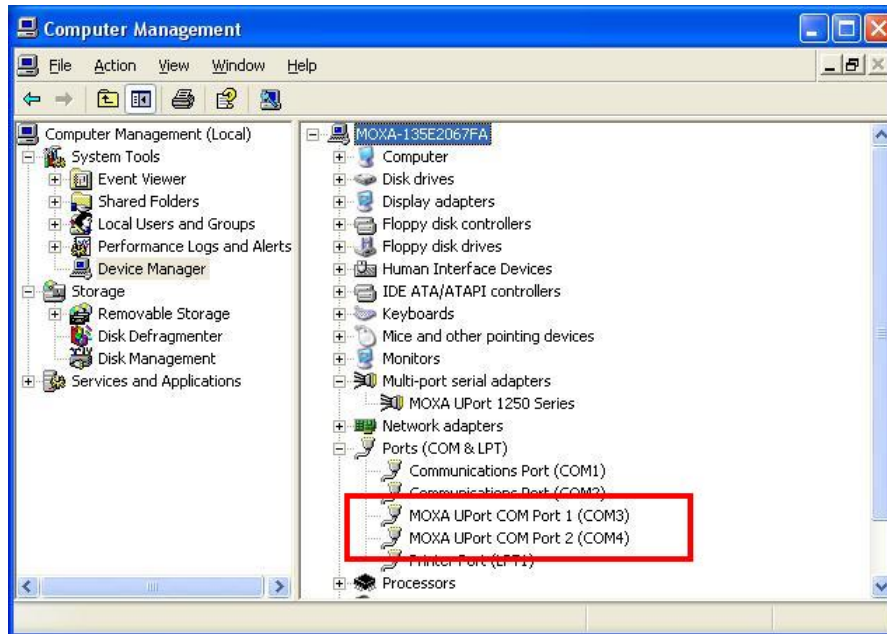


- Repeat Step 1 through Step 5 for each of the remaining ports (once for the UPort 1200 series, 3 times for the UPort 1400 series, 7 times for the UPort 1600-8 series, 15 times for the UPort 1600-16 series).

- The **Found New Hardware** balloon will reappear to inform you that the hardware was installed successfully.



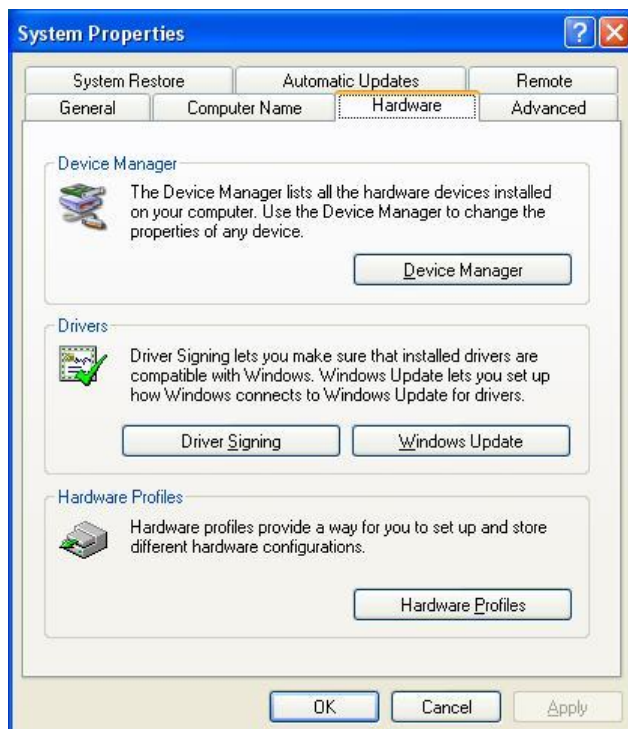
- Open Windows Device Manager to check that the installation was successful. The UPort USB-to-serial converter should appear under Ports (COM&LPT).



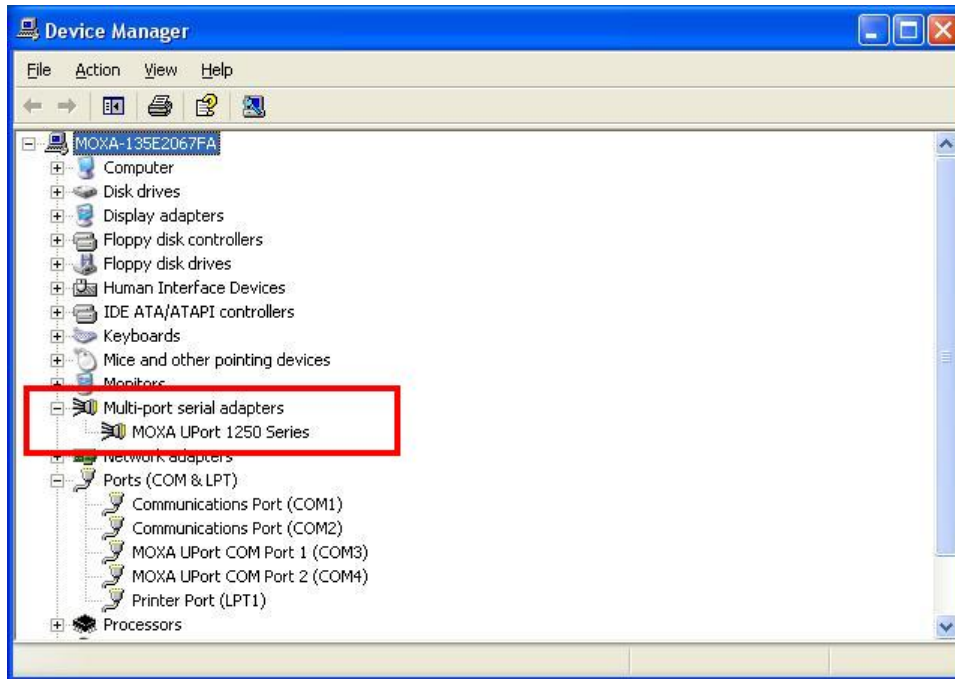
Configuring the Ports

After the driver has been installed, use Windows' **Device Manager** to configure the UPort serial ports.

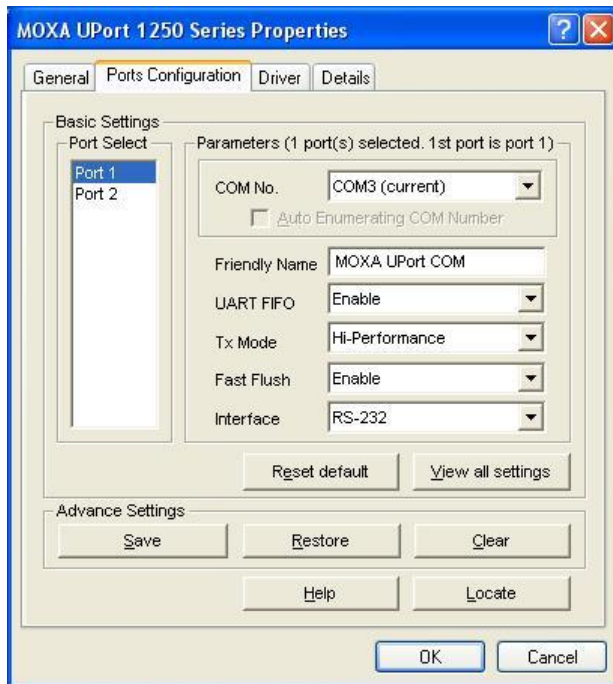
- With the **System Properties** window open, click on the **Hardware** tab, and then click on **Device Manager**.



- Expand the **Multi-port serial adapters** tab, right click **MOXA UPort 1250 Series**, and then click **Properties** to open the UPort's configuration panel.



The **Ports Configuration** page settings are described below.



Port Settings

Auto Enumerating COM Number

If the "Auto Enumerating COM Number" checkbox is checked, COM numbers will be assigned automatically and in sequence to the ports. E.g., COM3 to Port 1, COM4 to Port 2, etc.

If you do not enable this check box, only the first COM Number will be changed to new COM number list in the drop-down list box. Enable this function if you want to configure several ports with sequential numbers.

Friendly Name

Setting	Factory Default	Necessity
1 to 20 characters (E.g., UPort 1610-8)	Moxa UPort COM	Optional

Use the "Friendly name" to allow easy identification of the serial devices that are connected to the UPort's serial ports.

UART FIFO

Setting	Factory Default	Necessity
Enable/Disable	Enable	Required

The UPort's serial ports provide a 128-byte FIFO both in the Tx and Rx directions. Disable UART FIFO setting when your serial device does not have a FIFO to prevent data loss during communication. For a slow serial device, we recommend you disable FIFO to improve the latency. If you want to use XON/XOFF flow control, we recommend disabling UART FIFO.

Tx Mode

Setting	Factory Default	Necessity
Hi-Performance, Classical	Hi-Performance	Required

To improve the write performance, you can select Hi-Performance mode. Under classical mode, the driver will not notify the user's program that Tx is completed until all Tx data has been sent out from the UPort; this mode will cause lower throughput. If you want to ensure that all data is sent out before further processing, classical mode is recommended. Classical mode is the same as the COM Port behavior: The WriteFile() call will only finish when all queued data are sent out.

Fast Flush

Setting	Factory Default	Necessity
Enable/Disable	Enable	Required

1. For some applications, the user's program will use the Win32 **PurgeComm()** function before it reads or writes data. With our design, after the program uses this **PurgeComm()** function, the UPort driver will keep querying the UPort's firmware several times to make sure that no data is queued in the UPort's firmware buffer, rather than just flushing the local buffer. This kind of design is used because of some special considerations. However, it might take more time (about several hundred milliseconds) than a native COM1, because it needs to work over Ethernet. This is why the native COM ports on the motherboard can work fast with this function call, but the UPort requires much more time.
2. To begin with, make sure there are some **PurgeComm()** functions being used in your application program. In this kind of situation, you might find that your UPort exhibits a much poorer operation performance than when using the native COM1 port. Once you have enabled the **Fast Flush** function, you can check to see if there has been an improvement in performance.
3. By default, the optional **Fast Flush** function is enabled, which allows the UPort driver to work faster when using the **PurgeComm()** function.
4. Win32 function **PurgeComm()** with PURGE_TXCLEAR will clear all queued Tx data. But for some applications, it will call this function for each transaction and result in low throughput. To avoid this, you can enable this function. The driver will only clear the data queued in the local buffer; it will not send firmware through the USB port to clear the data queued in the firmware buffer.

Interface

UPort 1410, 1610-8, 1610-16

Setting	Factory Default	Necessity
RS-232	RS-232	Required

UPort 1250, 1250I, 1450, 1450I, 1650-8, 1650-16

Setting	Factory Default	Necessity
RS-232, RS-422, 4-wire RS-485, 2-wire RS-485	RS-232	Required

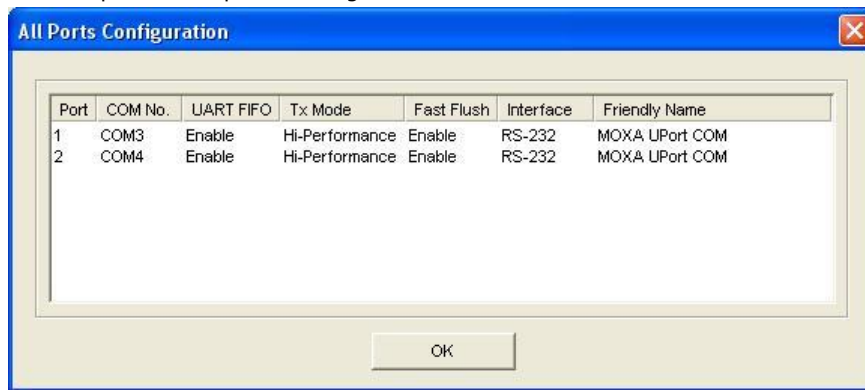
Reset default

If you click the **Reset default** button, all the settings will return to Factory default settings:

COM Number:	<Assign available COM number automatically>
Tx Mode:	Hi-Performance
UART FIFO:	Enable
Fast Flush:	Enable
Interface:	RS-232

View All Settings

You can preview all ports settings with this function.



Advanced Settings

Serial transmission applications use names such as COM3 and COM4 to identify COM ports. Unfortunately, most USB-to-serial products are unable to use fixed COM names on the host PC. This means the names of the COM ports change when the USB-to-serial device is plugged into a different USB port, either on the same or a different PC, forcing the user to reconfigure the COM names manually from within the application. Moxa’s UPort™ 1200/1400/1600 USB-to-serial converters have two advanced features that allow them to use fixed COM names when the user enables the COM port.

With Moxa’s COM Preserver™ function or fixed-base COM mode, the COM names remain on the UPort™ device. Moreover, the COM Preserver™ function can even create the same COM port names on a different host PC. With this feature, you do not need to modify application programs, or rebuild the entire project every time you install a new operating system or upgrade the computer. Don’t worry about moving the UPort™ from one USB hub to another, or even from one computer to another.

COM Preserver – Driver Setting Management

UPort provides one special function to help you manage the UPort settings. In the general case, you need write down all the settings including COM number to prevent them from being lost. In some applications, to clone multiple systems you also need to worry about how to clone the COM Port settings. Using the UPort **COM Preserver** function, you just need to save all the settings into UPort device directly– just like a USB Mass Storage device. You do not need to record it using additional paper or disk. If your host crashes, you can just install the driver into new host, plug the original UPort and click the **Restore** button to restore all settings back very quickly.

NOTE If you want to use these settings in another PC, be sure the PC has a free COM port available. Otherwise, the new settings will copy over the settings of a COM port that is already in use.

Save

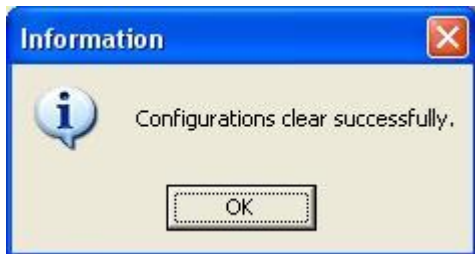
Save all settings to the UPort.

**Restore**

Read all UPort settings as new settings. Click **OK** to activate.

**Clear**

Clear the UPort settings stored in the UPort. This operation is similar to resetting all settings to their factory defaults.

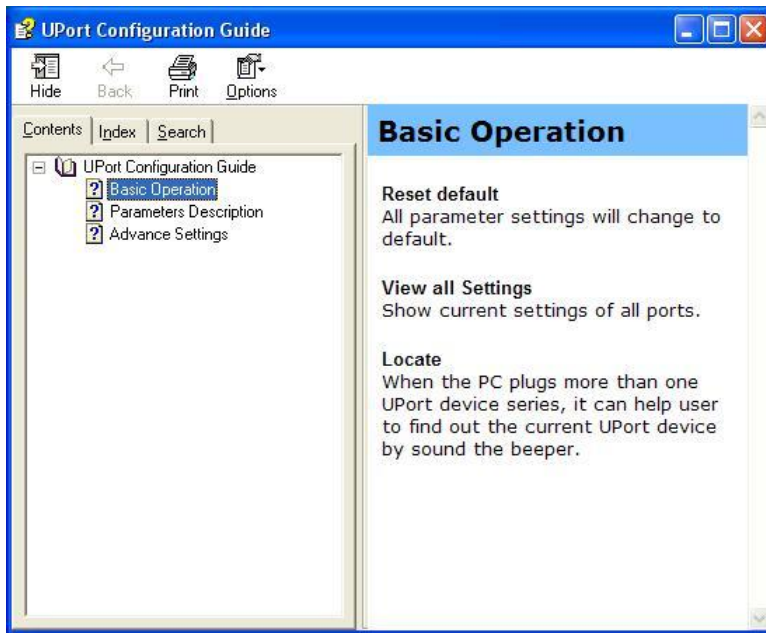


The following settings will be saved to the UPort if you select **Save**:

COM number, Friendly Name, Transmission Mode, FIFO settings, Fast Flush settings, and Interface.

Help

Clicking **Help** will open the online help for the UPort.



Locate

Use this function to identify the UPort’s location, especially when two or more UPorts are installed in the same computer. This function will ask the UPort to flash the ready LED and turn on the Buzzer until you stop it.



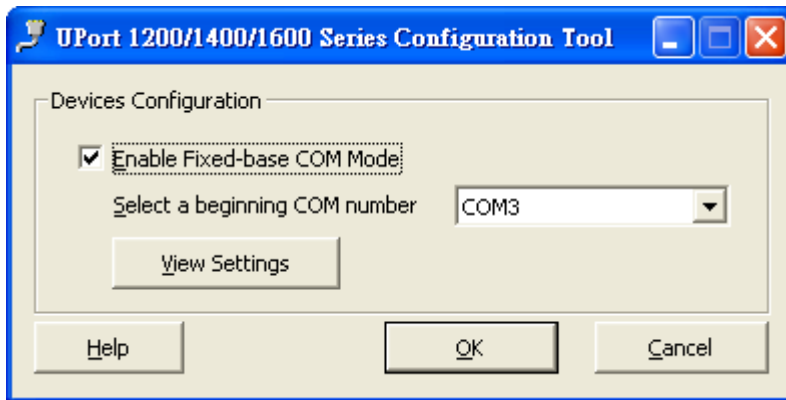
Fixed-base COM

Moxa’s UPort 1200/1400/1600 Series Utility gives users a convenient tool for configuring and maintaining products from the UPort series. In this section, we introduce the “Fixed-base COM Mode” function that enables user to set COM names on the host PC. We use the UPort 1250 as an example.

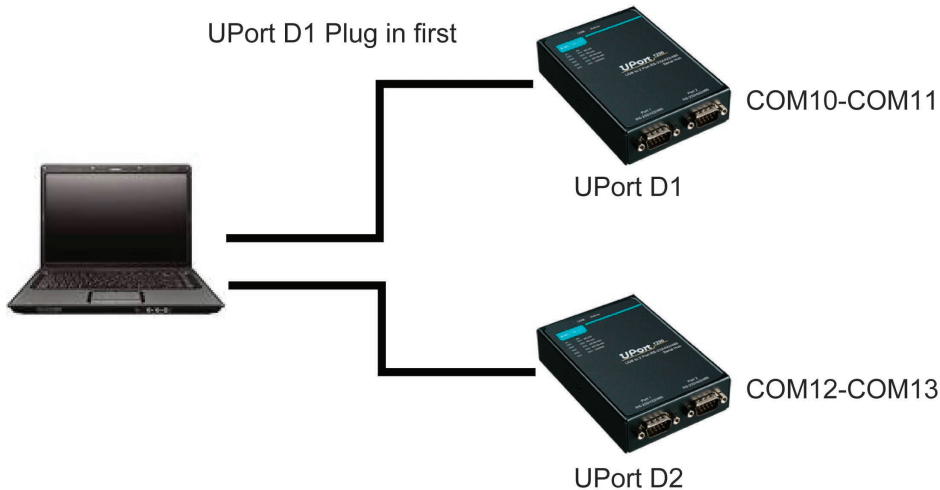
Enable Fixed-base COM Mode

Moxa’s UPort 1200/1400/1600 series provides a unique fixed-base COM function that allows users to set a specific initial COM port number. Regardless of which UPort is plugged into the host, the COM port numbers for the UPort’s serial ports will be numbered sequentially starting with the initial COM port number.

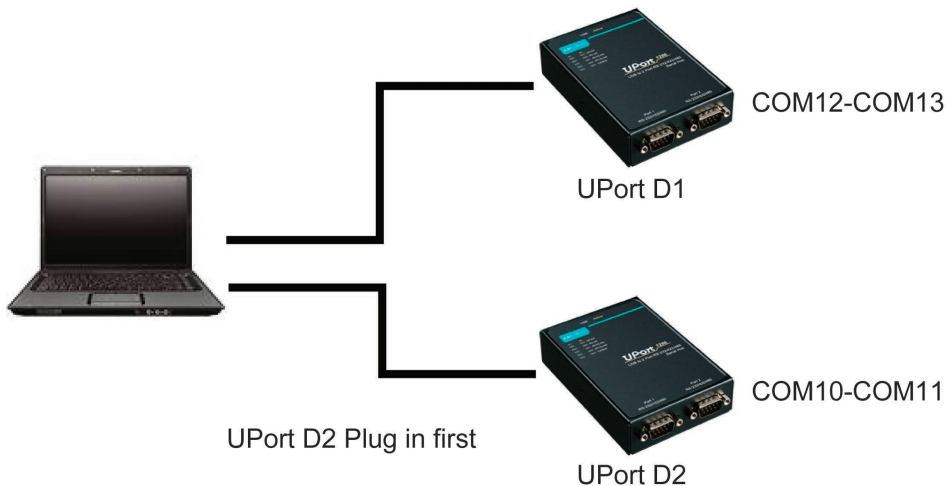
The default setting is disabling Fixed-base COM Mode. To use "Fixed-base COM Mode," be sure to check the "Enable Fixed-base COM Mode" check box.



Fixed-base COM Mode" allows users to specify which COM number will be assigned first. In addition, COM numbers are assigned sequentially, and are not tied to specific UPort converters. For example, assume that you have set COM10 as the first COM number that will be assigned. If UPort D1 is plugged into your computer first, your computer will assign COM10 and COM11 to the UPort's serial ports. When UPort D2 is plugged in, the computer will assign COM numbers COM12 and COM13.

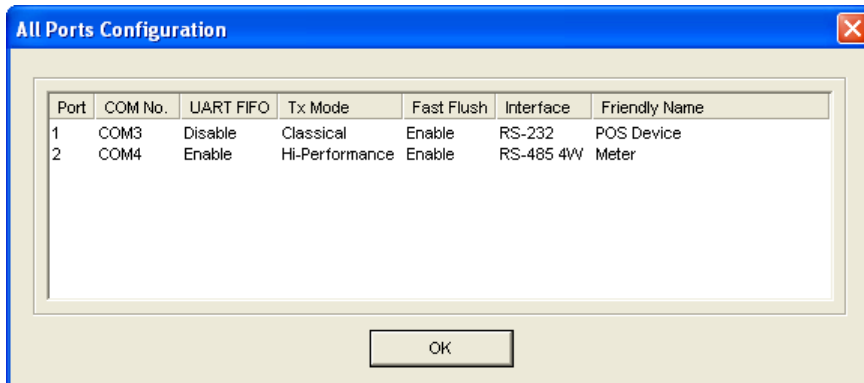


If both UPorts are unplugged from the computer, and then UPort D2 is plugged back in, the computer will now assign COM10 and COM11 to the UPort's serial ports. When UPort D1 is plugged back in, COM numbers COM12 and COM13 will be assigned the UPort's serial ports.

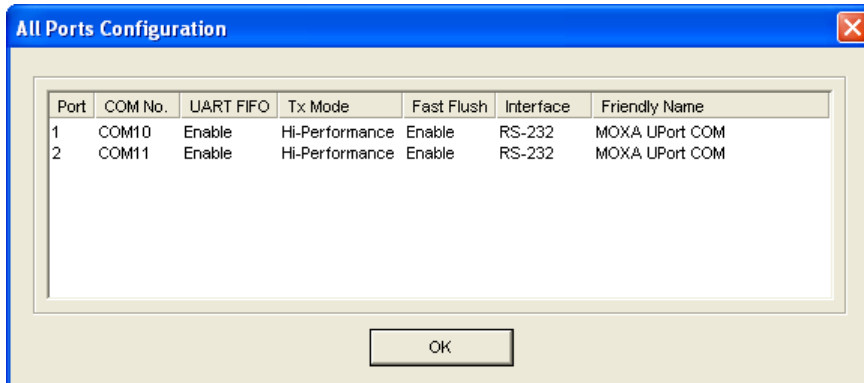


When “Fixed-base COM Mode” is enabled for the first time, all COM port numbers and serial port parameters will be reset to their default values. You can then set the COM numbers and configuration parameters to the values needed for your application.

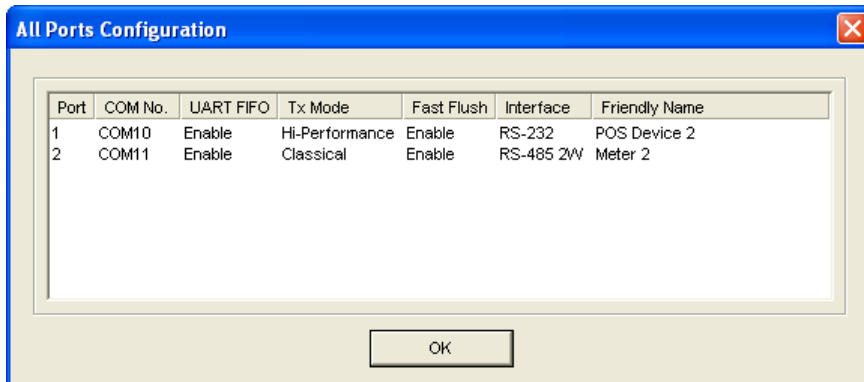
For example, let’s assume that before you enable “Fixed-base COM Mode” you set the parameters of the UPort 1250 as follows:



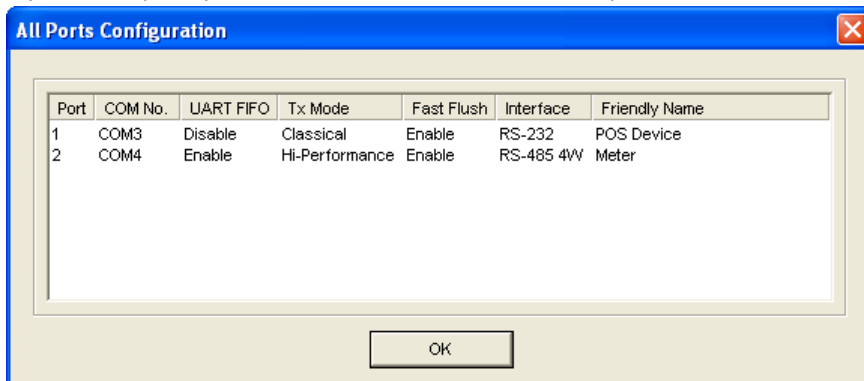
If you enable “Fixed-base COM Mode,” all parameters will be reset to their default values:



At this point you can set serial parameters to the values needed for your application.



If you subsequently disable “Fixed-base COM Mode,” all parameters will be restored to the original settings:



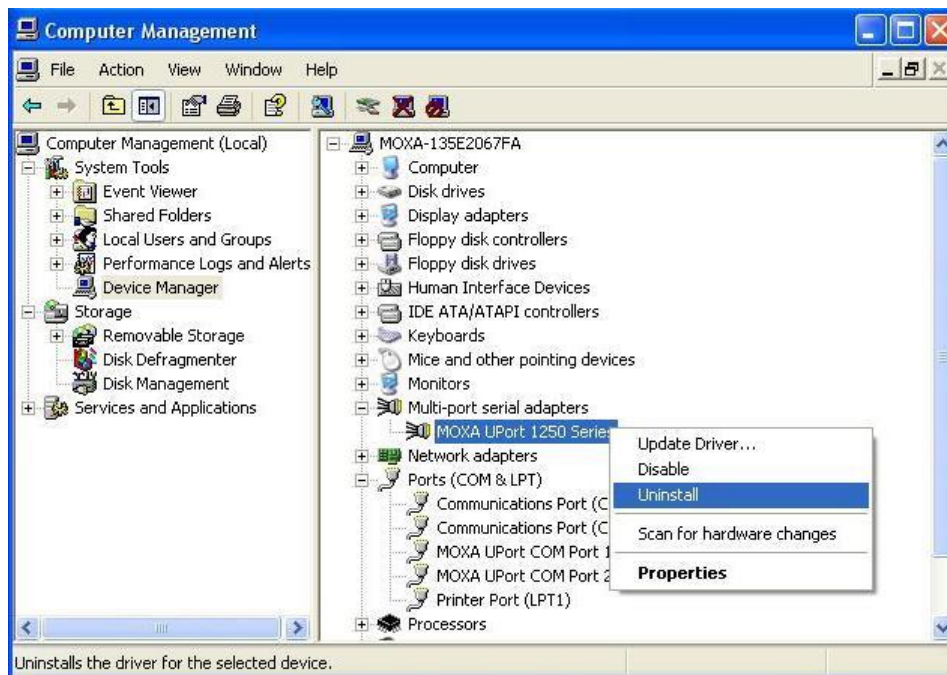
Uninstalling the UPort

If you want to remove the UPort, you just need to remove the device from **Device Manager**. The UPort driver will still stay alive enabling other UPort devices to keep working.

1. To uninstall the UPort, click **Start → Settings → Control Panel → System**, select the **Hardware** tab, and then click **Device Manager**.



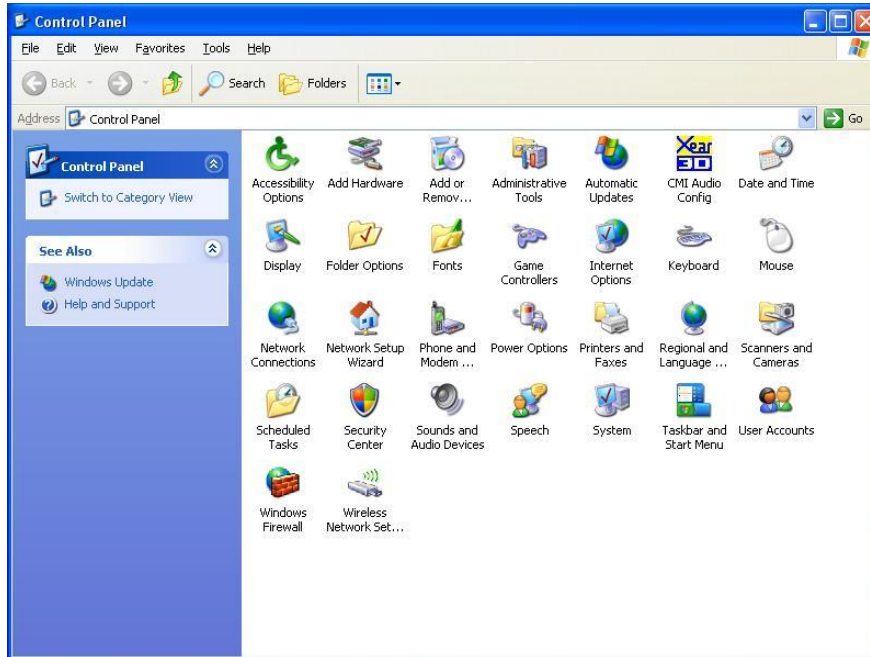
2. Expand the **Multi-port serial adapters** tab, right click **MOXA UPort 1250 Series**, and then click **Uninstall** to uninstall this UPort. A window will pop up to confirm that you want to remove this UPort.



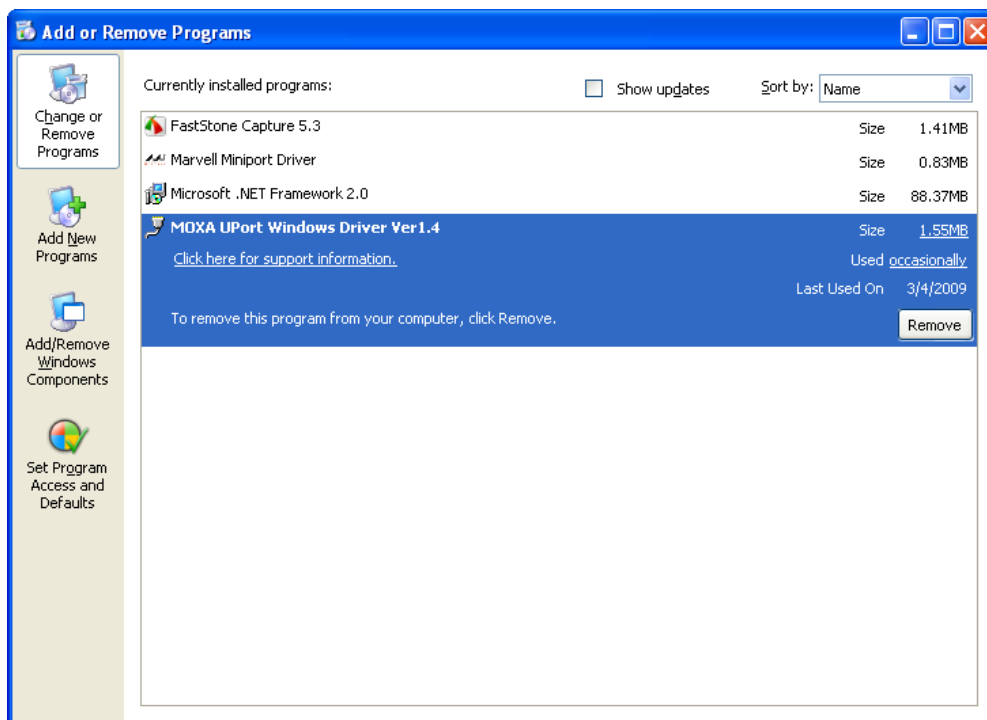
3. Click **OK** to continue uninstalling the UPort. The UPort will be removed from the list of **Multi-port serial adapters**.

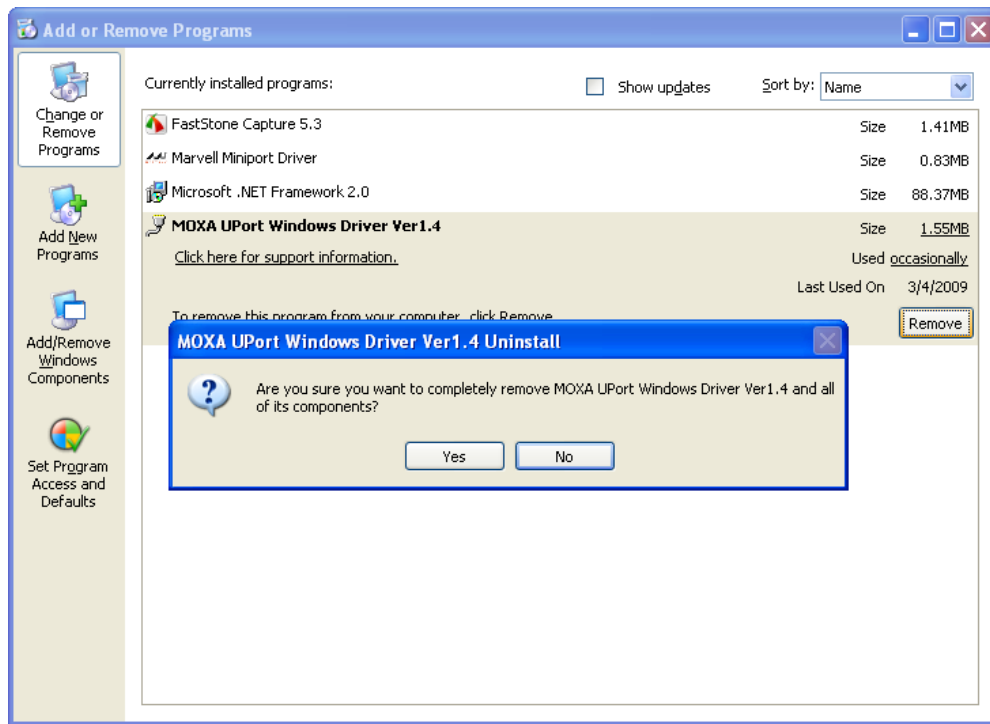
Uninstalling the Driver

1. To uninstall the driver, open the Control window, and click **Add/Remove Programs**.

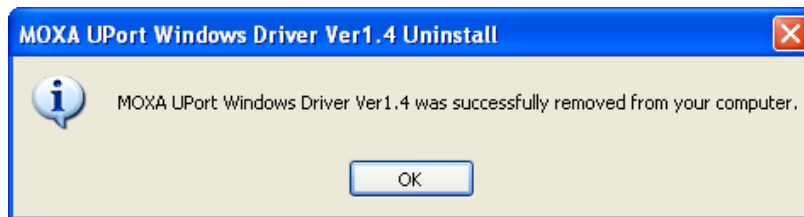


2. Select Moxa **UPort Windows Driver Ver1.4**. Click the **Remove** button.





3. Click **OK** to proceed with the un-installation procedure.



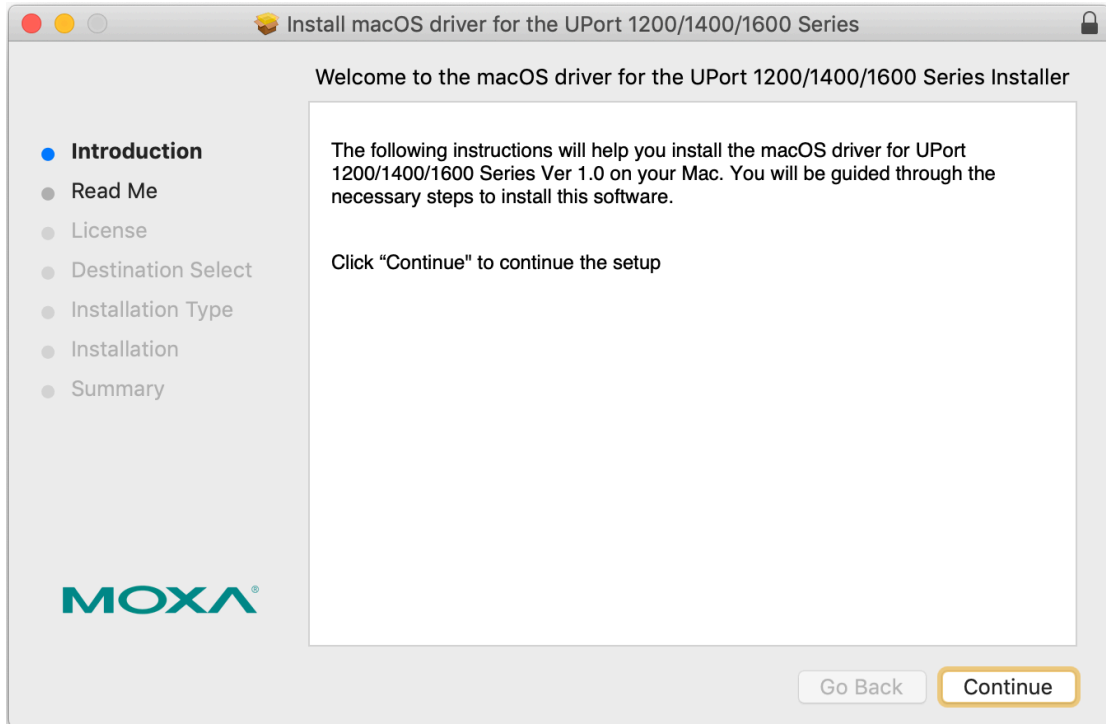
Installing the Mac Driver for macOS

For macOS 10.12 and later, follow the steps below to install the driver.

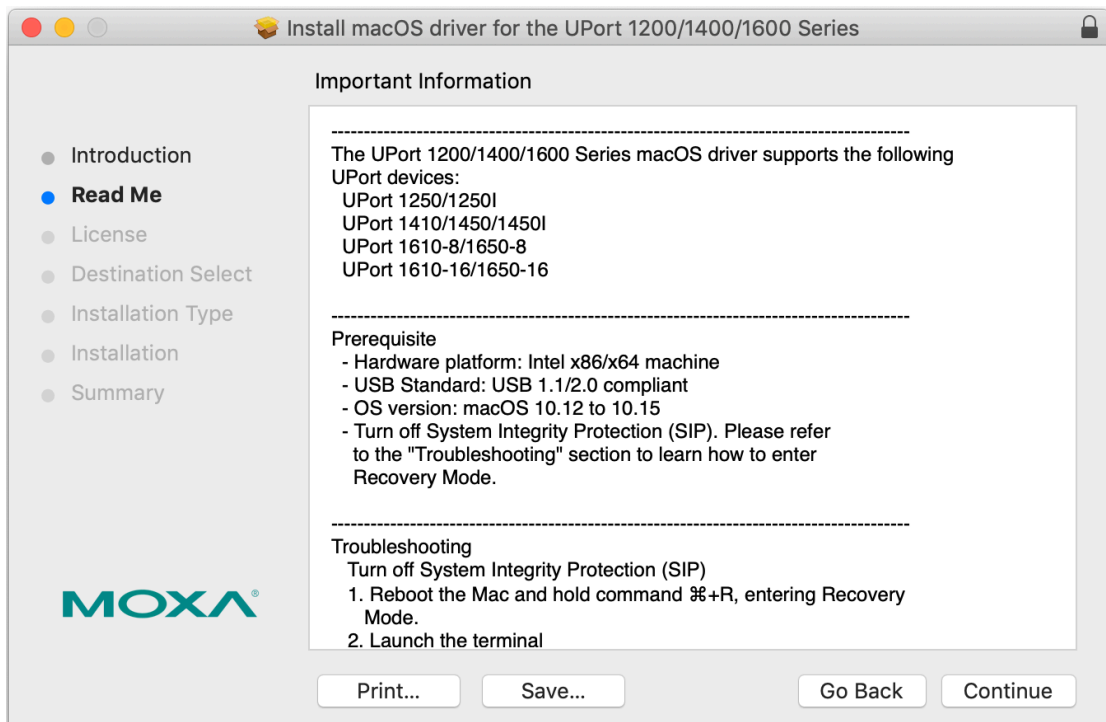
1. Restart your Mac and enter Recovery Mode by pressing and holding "⌘ + R".
2. Disable System Integrity Protection (SIP) by typing 'csrutil disable' in the terminal.
3. Return to Normal Mode.
4. Launch the UPort driver installer and finish the installation procedures shown below.
5. Enter Recovery Mode again.
6. Enable System Integrity Protection (SIP) by typing 'csrutil enable' in the terminal.
7. Return to Normal Mode.

Installation Procedure

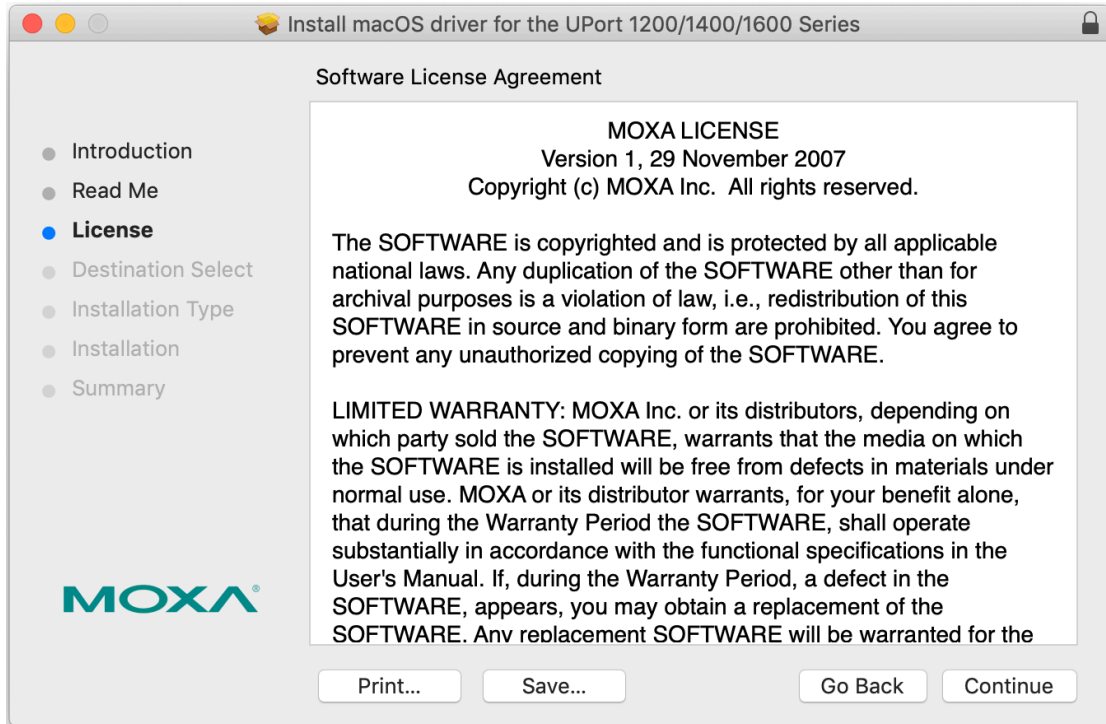
1. Run the installer package, which you can find on Moxa’s support website <http://www.moxa.com/support/>. Click **Continue** to install the driver.



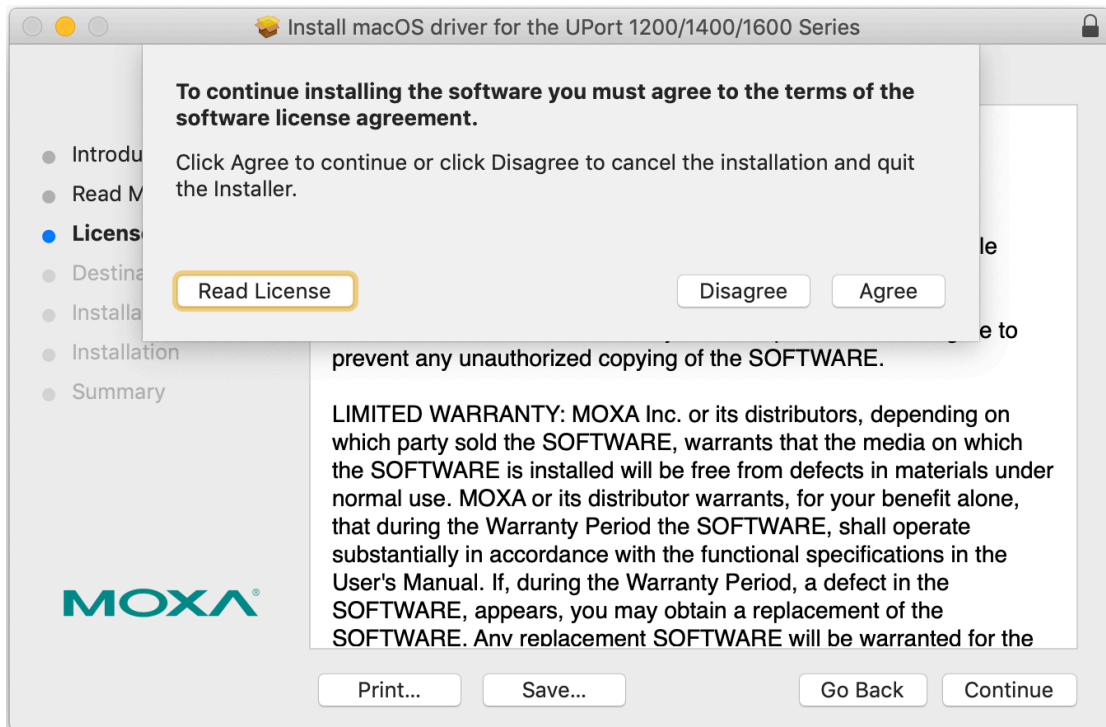
2. Under **Read Me**, see the instructions for installation and troubleshooting.



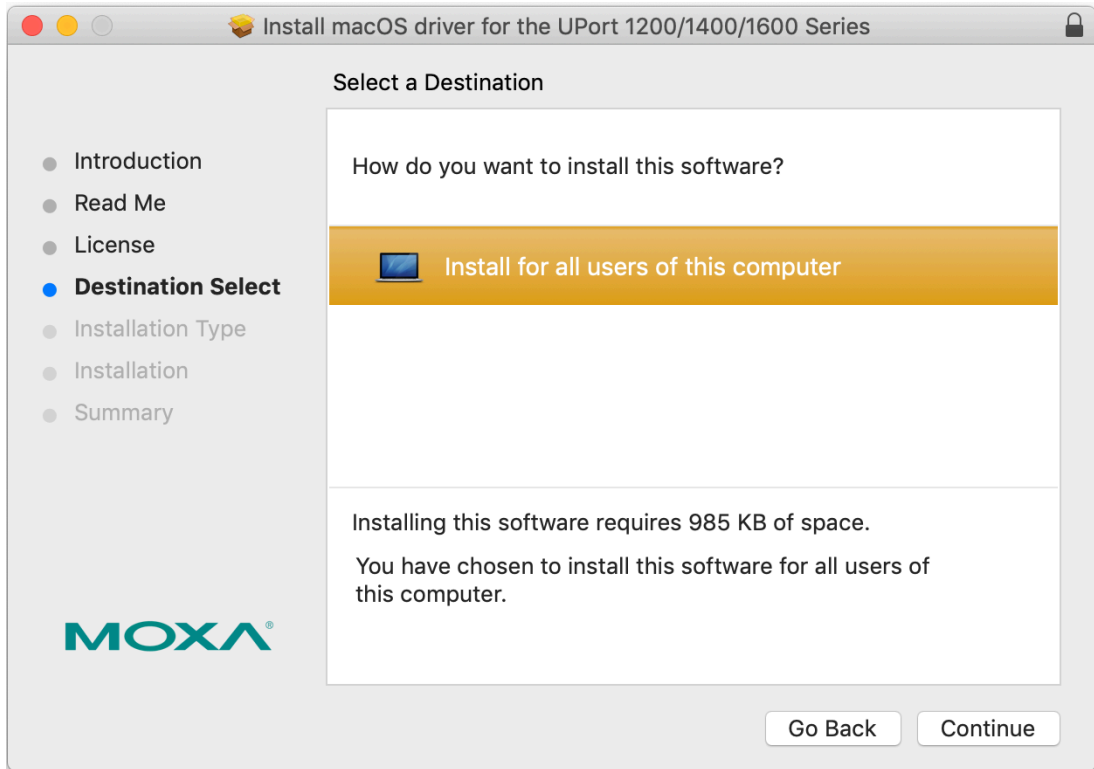
3. Please read the Software License Agreement.



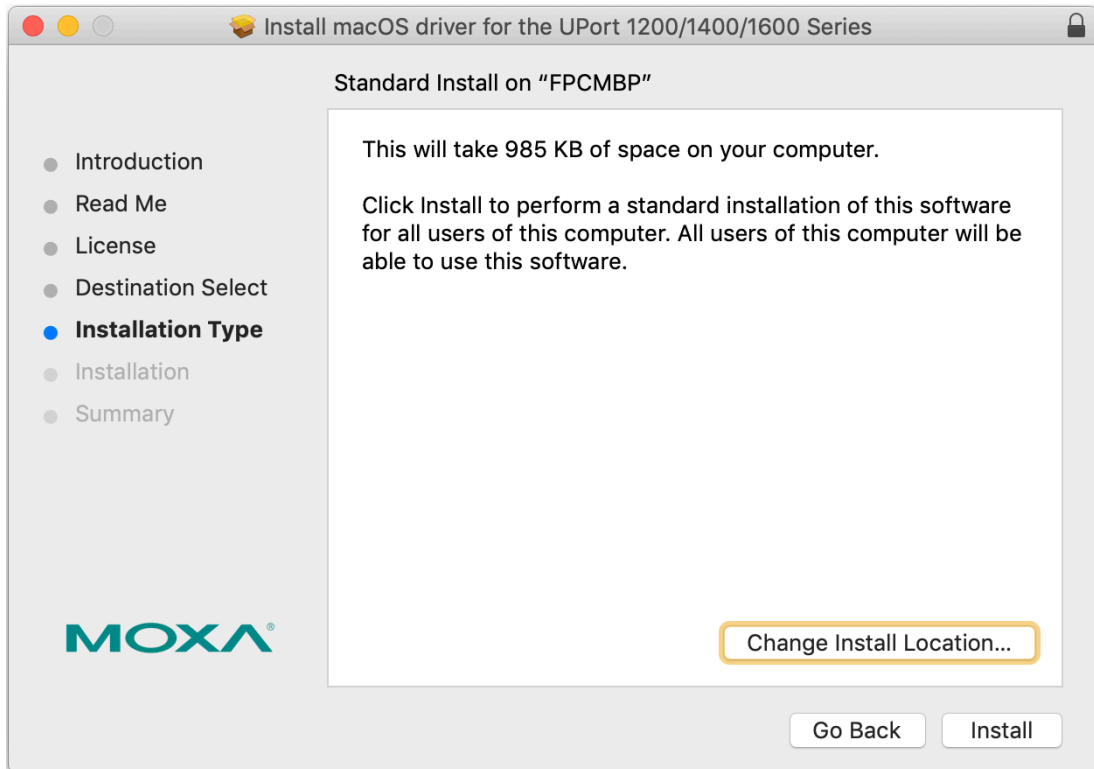
4. By clicking **Agree**, you agree to the terms and conditions of this Software License Agreement. Next, the **Destination Select** page will open.



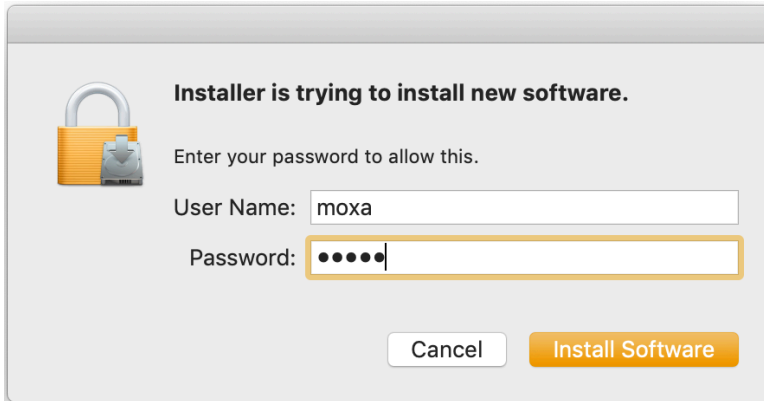
- 5. Under **Destination Select**, select a target user.



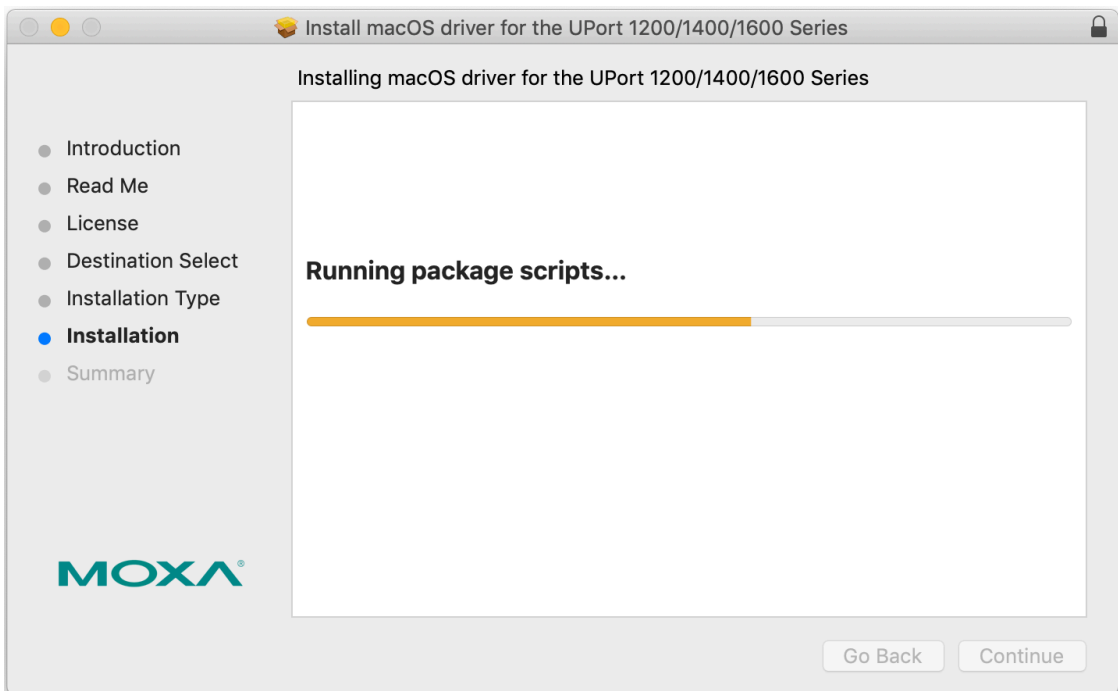
- 6. Click **Install** to start the installation.



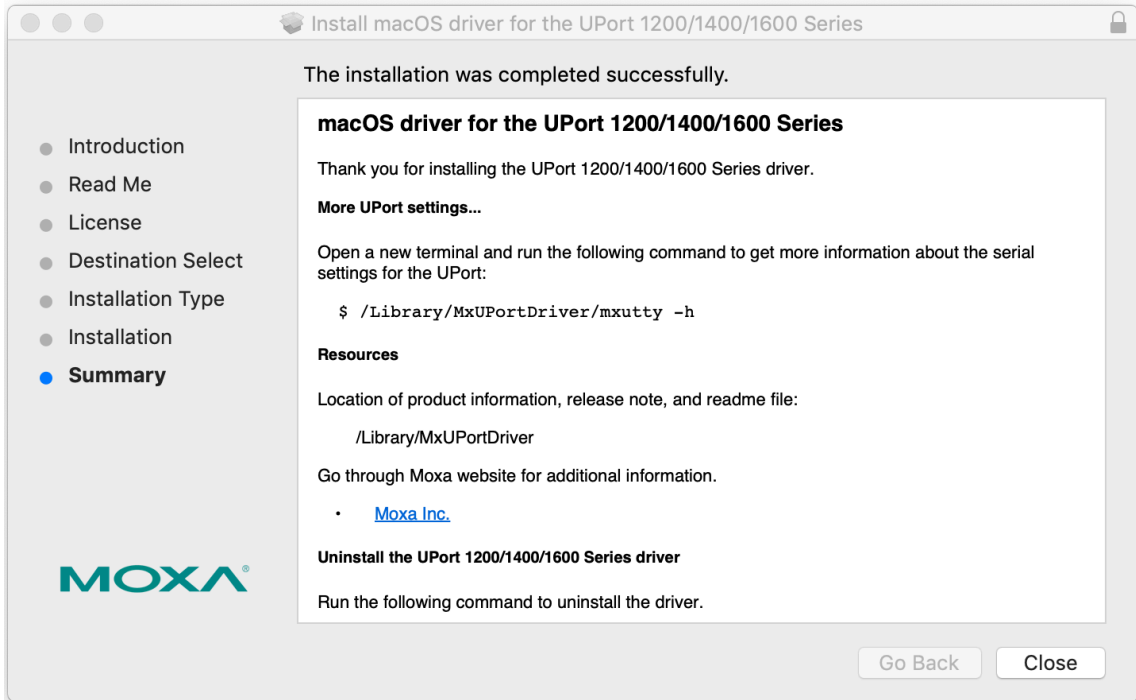
Key in your credentials to confirm the installation.



7. The installation process starts.

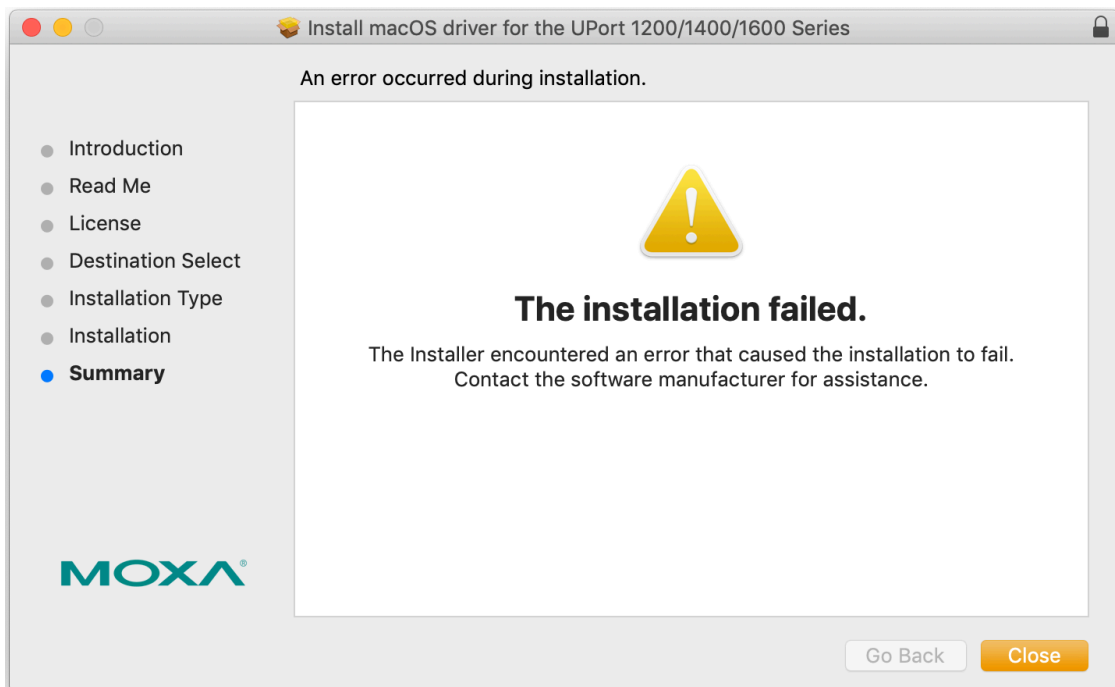


8. Installation has been completed.



Troubleshooting

If the installation encounters an error message such as below, please check your System Integrity Protection (SIP) by executing the **csrutil status** in the terminal. If it is enabled, please disable it and try to install it again.



If you cannot install the driver on macOS 10.15 successfully, starting with macOS 10.15 Catalina, Apple has introduced a new read-only protection that does not allow users to install the driver directly in the kernel folder. To solve this issue, please type the following command in Terminal before installation:

```
$ sudo mount -uw /
```


Setting the Serial Parameters

mxutty is a command line tool used to set/query the UPort settings.

Usage: **mxutty** <operation> [device_name]

Device_name: The POSIX device name of UPort, such as '/dev/tty.USB0'

Operation:

Command	Description
-h	
-i	
-i [TYPE]	Set the type of serial interface. [TYPE] is one of the following: [RS232] – RS-232 mode [RS422] – RS-422 mode [RS4852W] - RS-485 2 wire mode [RS4854W] - RS-485 4 wire mode
-a	Query the setting of the Fast Flush function
-a [VALUE]	Set to enable or disable the Fast Flush function. [VALUE] is one of following: [1] – Enable [0] - Disable
-f	Query the setting of FIFO
-f [VALUE]	Set to enable or disable FIFO. [VALUE] is one of following: [1] – Enable [0] - Disable
-l	Locate the UPort with a beeper
-v	Show the overall information for the UPort

Examples:

```
./mxutty -i RS4852W /dev/tty.USB0 -> Set tty.USB0 to RS-485 2 wire mode
```

```
./mxutty -i /dev/tty.USB0-> Get the interface mode of tty.USB0
```

```
./mxutty -v-> Show overall information about the UPort
```

Uninstall the UPort 1200/1400/1600 Series Driver

Run the following command to uninstall the driver.

```
$ sudo bash /Library/MxUPortDriver/uninstall.sh
```

Installing the Linux Driver

The Linux driver provided with the UPort 1200/1400/1600 maps Linux host ttyMXUSBxx ports to UPort device ports. Once the mapping has been set up, Linux users and applications can connect to a device port as if it were a ttyMXUSBxx port. These drivers have been designed and tested for the majority of Linux distributions. Please check Moxa's website (<http://www.moxa.com>) for the latest Linux kernel support.

Driver Files

First obtain the Linux driver file **driv_linux_uport_v1.x_build_xxx.tgz** from the Moxa website at <http://www.moxa.com>. Save the driver file to a specific directory, such as **/moxa**, and then execute the commands listed below:

```
# cd /moxa
# tar xvfz driv_linux_uport_v1.x_build_xxx.tgz # cd /moxa
# make
# make install
# modprobe mxuport
# ls /dev/ttyMXUSB*
```

Module Driver Configuration

We cover the following topics in this section:

- Building the Moxa Driver
- Installing the Moxa Driver

Building the Moxa Driver

Before using the Moxa driver, you will need to compile all of the source code. This only needs to be done once, unless you modify the source code. If the source code is modified, then you will need to re-compile it.

To compile the source code, change to the **/moxa/mxuport** directory, and then run the **ls** (list) command to check if the **Makefile** file is in the directory. Next, run the "make" command as follows:

```
# make
```

Installing the Moxa Driver

To install the Moxa driver, change to the **/moxa/mxuport** directory, and then run the **ls** (list) command to check if the **Makefile** file is in the directory. Next, run the "make install" command as follows:

```
# make install
```

The driver files "mxuport.ko" and "mxusbserial.ko" will be compiled and copied to system directories.

Loading the Moxa Driver

To load the Moxa driver, change to the **/moxa/mxuport** directory, and then run the **ls** (list) command to check if the **Makefile** file is in the directory. Next, run the "modprobe mxuport" command as follows:

```
# modprobe mxuport
```

After loading the Moxa driver, run the following command to check the Moxa serial port

```
# ls /dev/ttyMXUSB*
```

<p>NOTE The serial COM port will be ttyMXUSB[nnn], nnn = 0~255. For example, ttyMXUSB0,ttyMXUSB1 ...</p>

Unloading the Moxa driver

To unload the Moxa driver, change to the **/moxa/mxuport** directory, and then run the **ls** (list) command to check if the **Makefile** file is in the directory. Next, run the two "rmmod" commands as follows:

```
# rmmod mxuport
# rmmod mxusbserial
```

Uninstalling the Moxa driver

To uninstall the Moxa driver, change to the `/moxa/mxuport` directory, and then run the `ls` (list) command to check if the `Makefile` file is in the directory. Next, run the two “make remove” command as follows:

```
# make remove
```

Setting the Serial Parameters

After installing the Moxa Linux Driver, you will be able to configure parameters.

1. Serial Interface:

The UPort 1250/1250I/1450/1450I/1650-8/1650-16 supports four interfaces: RS-232, RS-485 2W, RS-485 4W, RS-422. If you want to switch to a different interface, execute the `setserial` command to set the port’s interface. The supported parameters are listed below.

Parameter Value	Interface
0x0	RS-232
0x1	RS-485 2W
0x2	RS-422
0x3	RS-485 4W

Example:

- (i) The following command sets the interface of `"/dev/ttyMXUSB0"` to RS-422:

```
# setserial /dev/ttyMXUSB0 port 0x2
```
- (ii) Use the following command to look up the serial settings of the current port:

```
# setserial -g /dev/ttyMXUSB0
```

2. Serial Baudrate:

`spd_hi` Use 57.6 kbs instead of 38.4 kbs
`spd_vhi` Use 115.2 kbs instead of 38.4 kbs.
`spd_shi` Use 230 kbs instead of 38.4 kbs.
`spd_warp` Use 460 kbs instead of 38.4 kbs.
`spd_normal` Use 38.4 kbs instead of 38.4 kbs.

Example:

```
# setserial /dev/ttyMXUSB0 spd_vhi
```

NOTE For the UPort with DB Male Serial Ports, you may refer to the DB9 Male Ports pin assignment section to loop back pin 2 and pin 3 for the RS-232 interface to carry out a self test on the device.

Troubleshooting

1. Compile error

Building a Moxa driver requires kernel header files. If you get a compile error, run `rpm -qa | grep kernel` to check if the kernel-source package is installed properly. If not, get the kernel-source `irpm` package and run `rpm -ivh <package>` to install it. You also need to make sure the build tool is ready by including `make/gcc/lib`. See Linux related documents for more information.

2. No such file or directory

This problem occurs when a device node is not generated automatically when loading the driver. It usually happens with previous kernel versions, such as versions 2.6.0 to 2.6.5. Therefore, just execute the `make node` script “`upmknod`” to generate the device node.

Installing the Windows CE Driver

In this section, we introduce installation procedures for the Windows CE 5.0 and Windows CE 6.0 drivers. Both Win CE 5.0 and Win CE 6.0 need the Win CE platform builder for installation. The only difference is that Win CE 6.0 also requires Visual Studio 2005. Win CE 6.0 platform builder has tools necessary for you to design, create, build, test, and debug Windows CE. Visual Studio 2005 and Win CE 6.0 Builder provide a workspace where you can work on both OS designs and projects to build your own embedded system.

Win CE 6.0 installation requires both Visual Studio 2005 and Win CE 6.0 Builder. When installing Visual Studio 2005, you can select your preferred language with .NET Framework SDK or use the "default".

After completing installation for Visual Studio 2005, run Win CE 6.0 Builder "setup.exe" to install and download the files.

You will need to select "**x86**" for the CE 6.0 operating system.

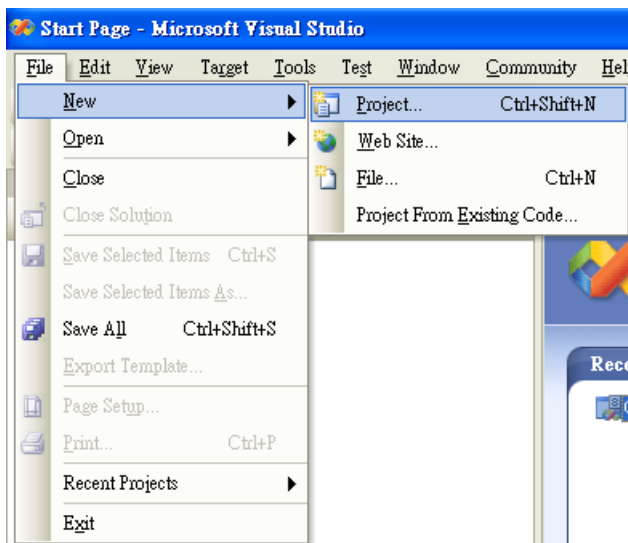
This process will may take a couple of hours and the folder size is around 3 GB.

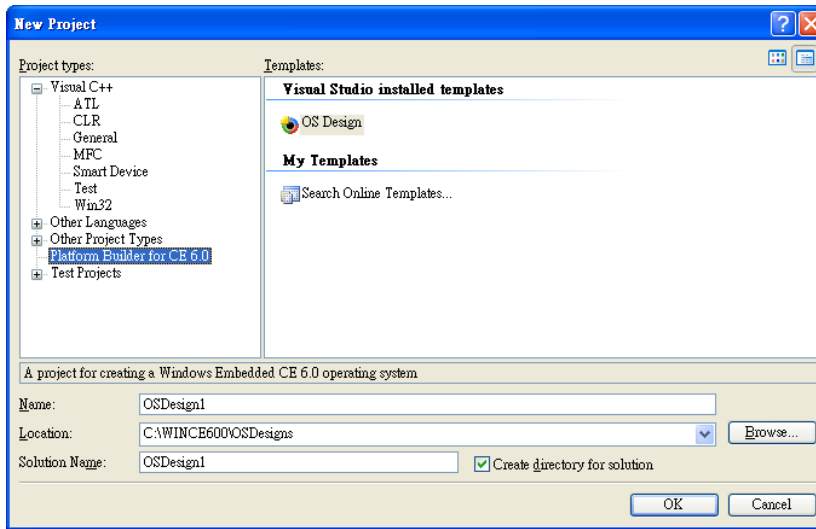
Installation With an Installation Package for Win CE 6.0

Installation Procedure

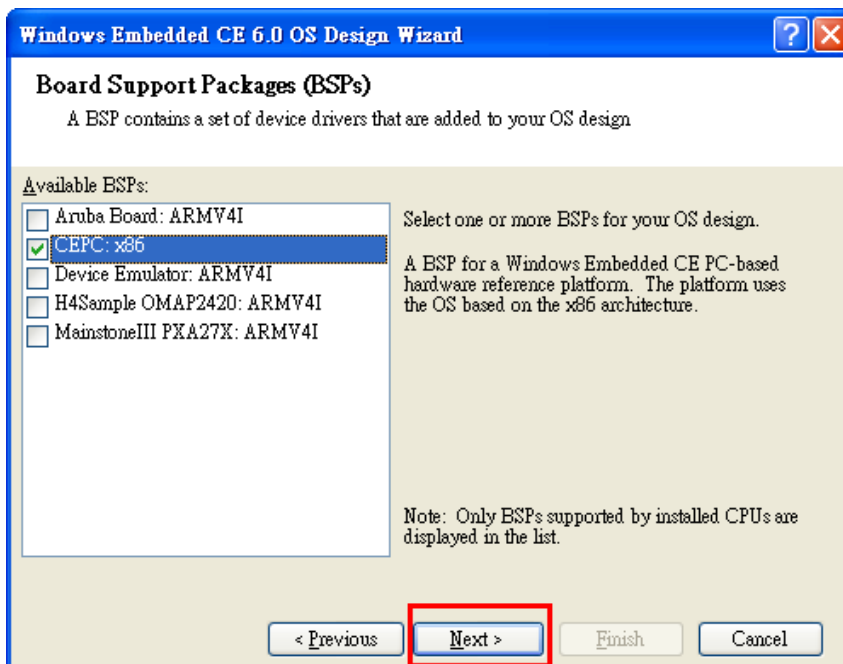
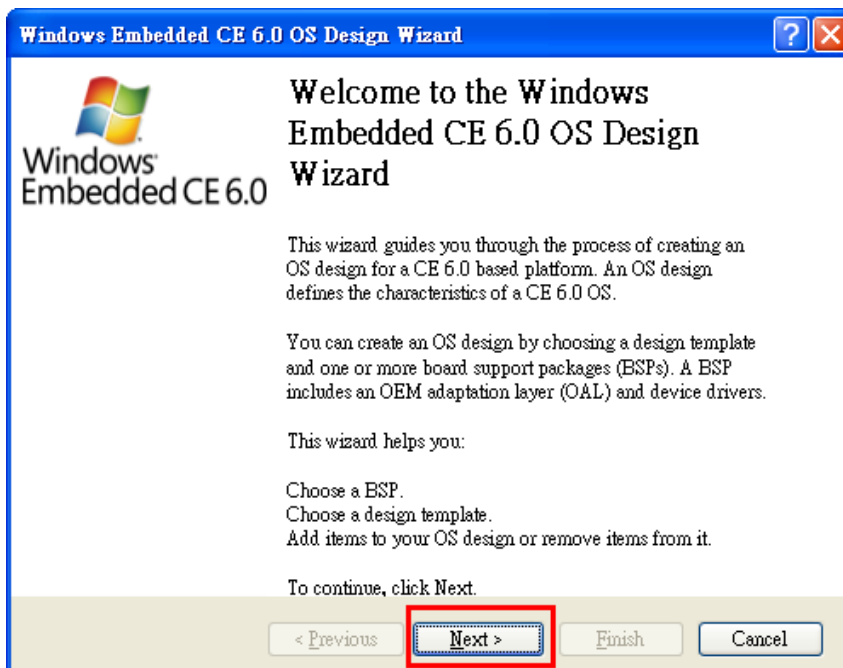
Copy the UPort 1200/1400/1600 WinCE 6.0 driver package onto your computer and extract. Double click on the installation package and it will automatically copy the **Mxser** folder to C:\MOXAUPORT\wince600\Uport.

1. Launch Visual Studio 2005 with Platform Builder WinCE6.0. Open the OSDesign that you want to install. In Visual Studio 2005, click **File** → **New** → **Project**, and select "Platform Builder for CE 6.0". Select "OS Design" for the template then click **OK**.

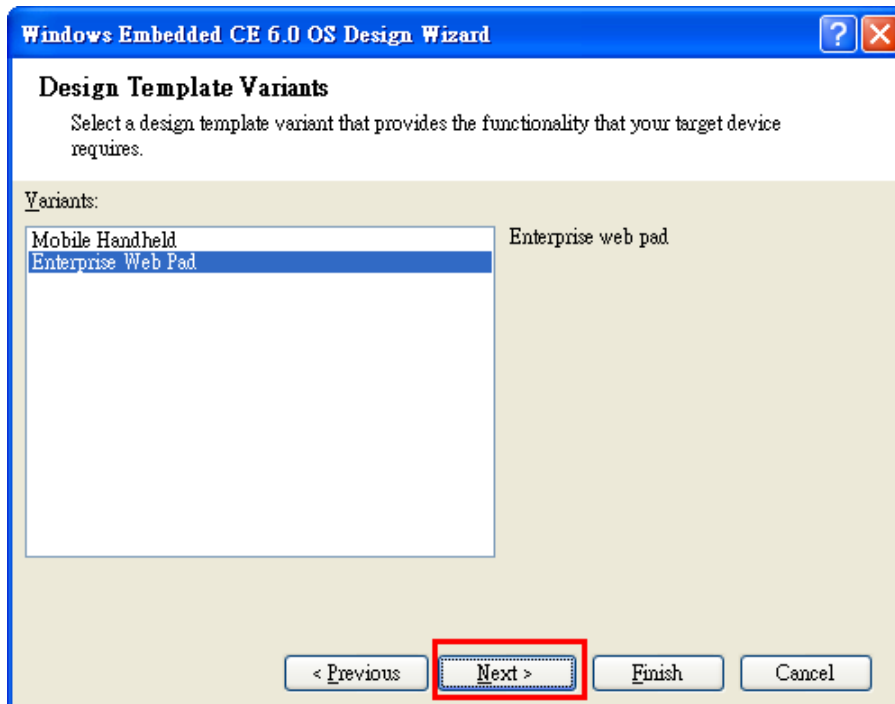
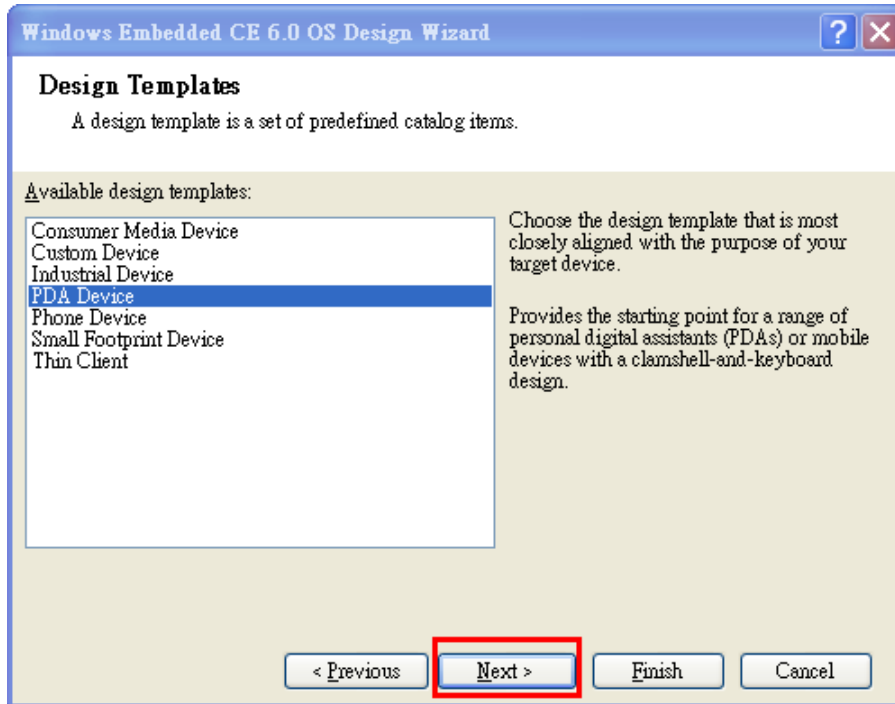


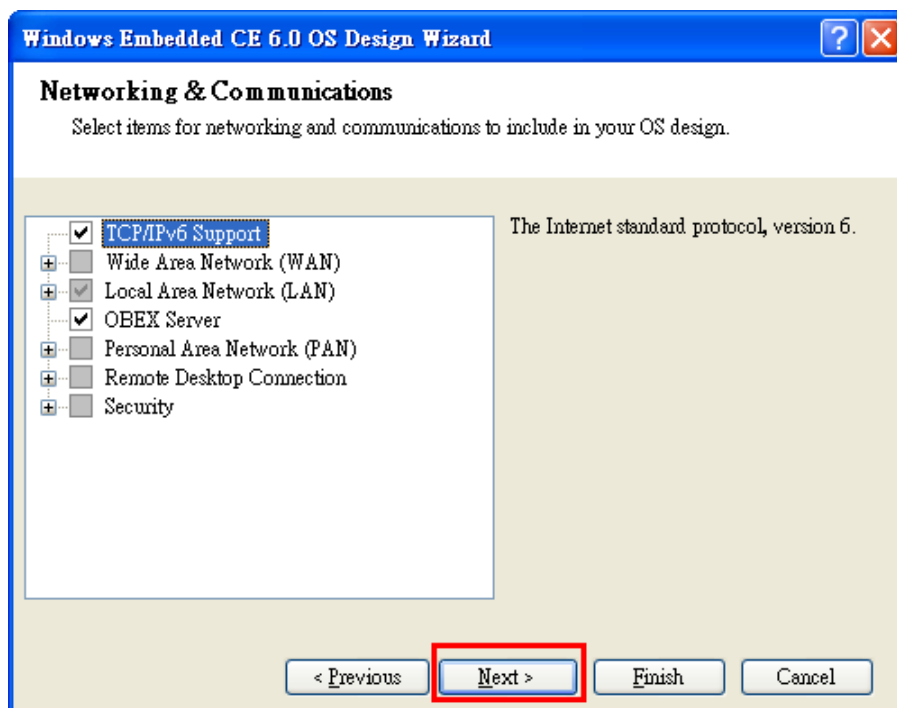
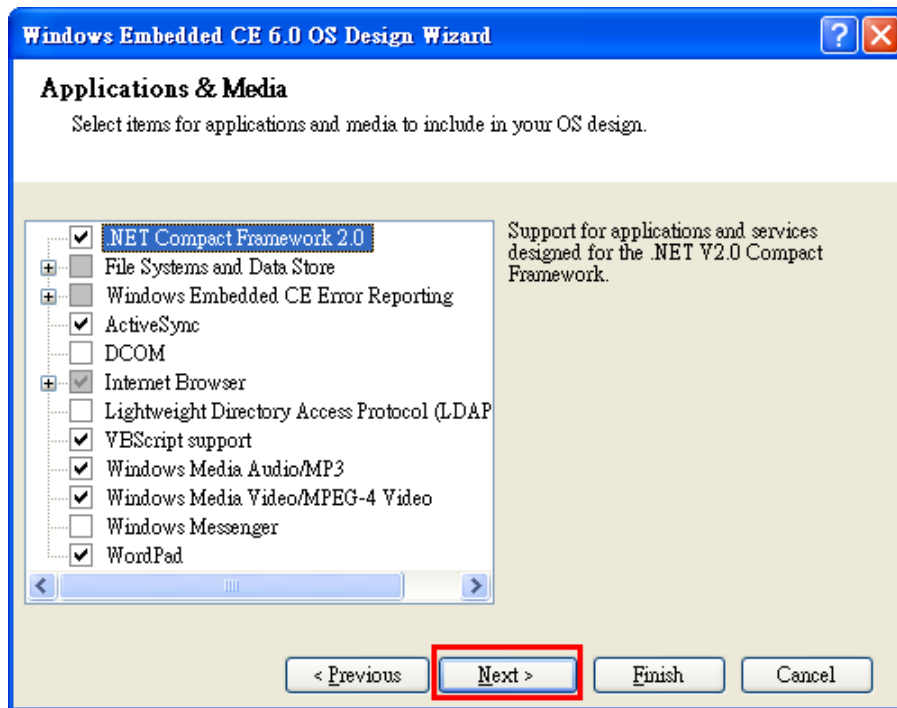


- When the CE 6.0 OS Design Wizard starts, select **CEPC: x86** for Board Support Packages.

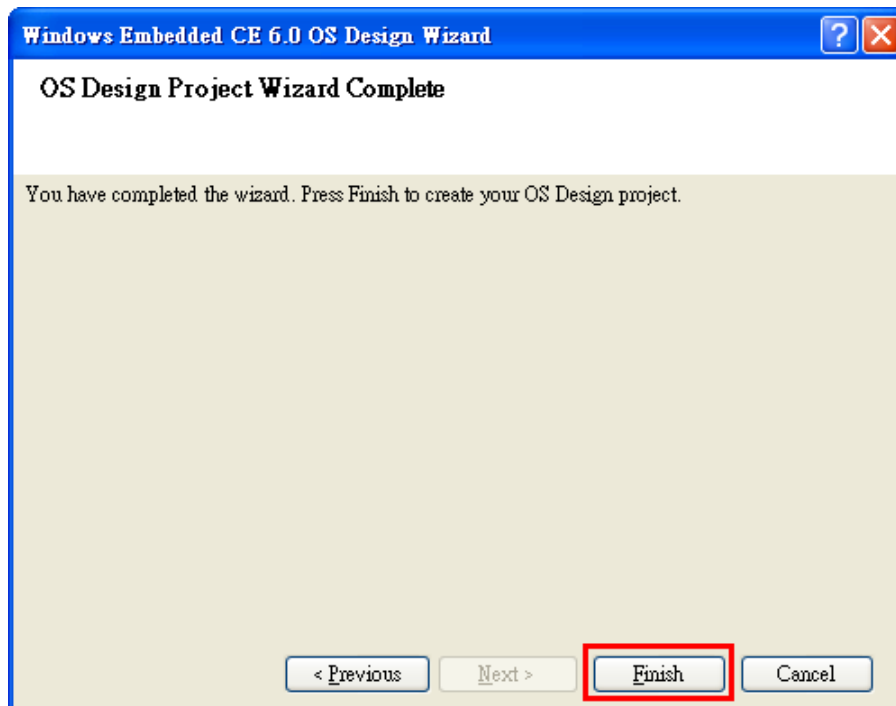


- Under **Design Templates** and **Design Template Variants**, select your environment, such as **PDA Device** or **Mobile Handheld**, and then click **Next**. In **Application & Media** and **Networking & Communication**, also select your environment, such as .NET Compact Framework 2.0, ActiveSync, Quarter VGA Resources-Portrait Mode, or TCP/IPV6 Support.

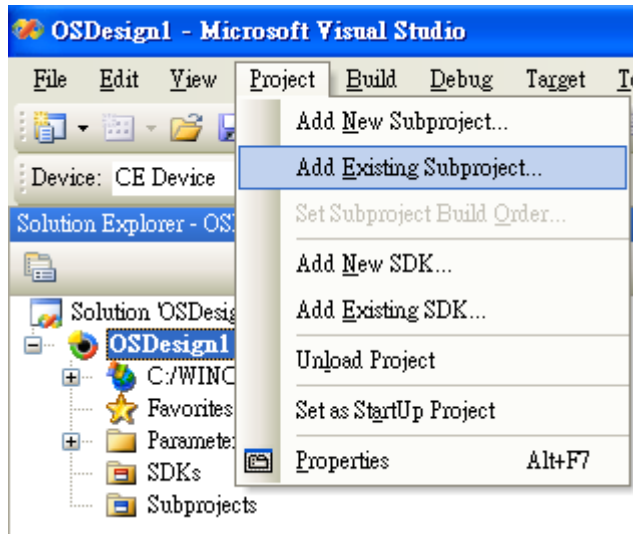




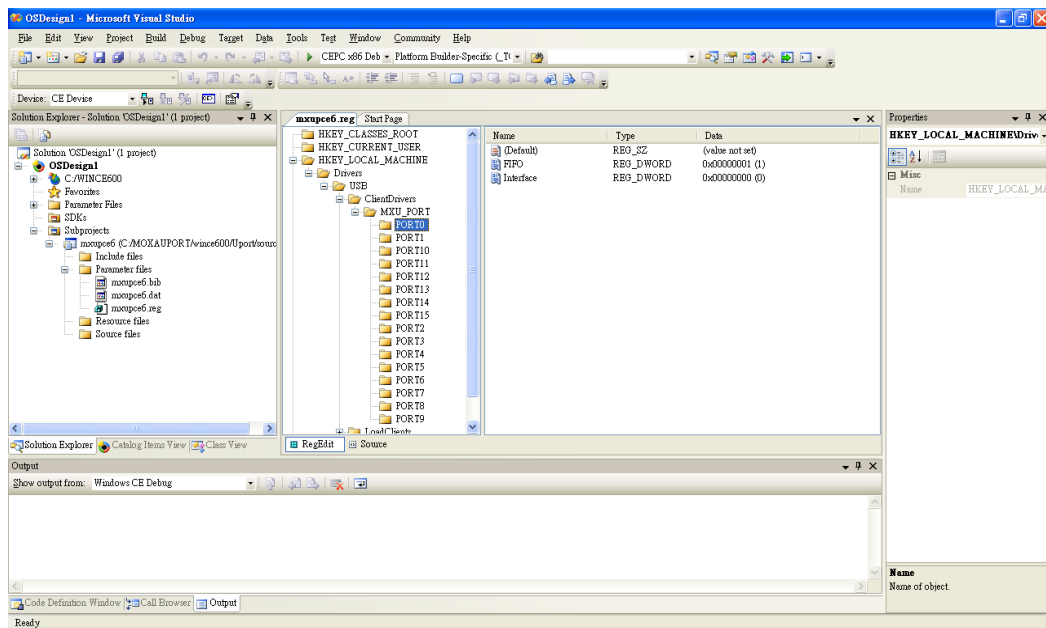
4. When the **OS Design Project Wizard Complete** screen appears, click **Finish**. The notification will pop up. Click "**Acknowledge**" to finish the project.



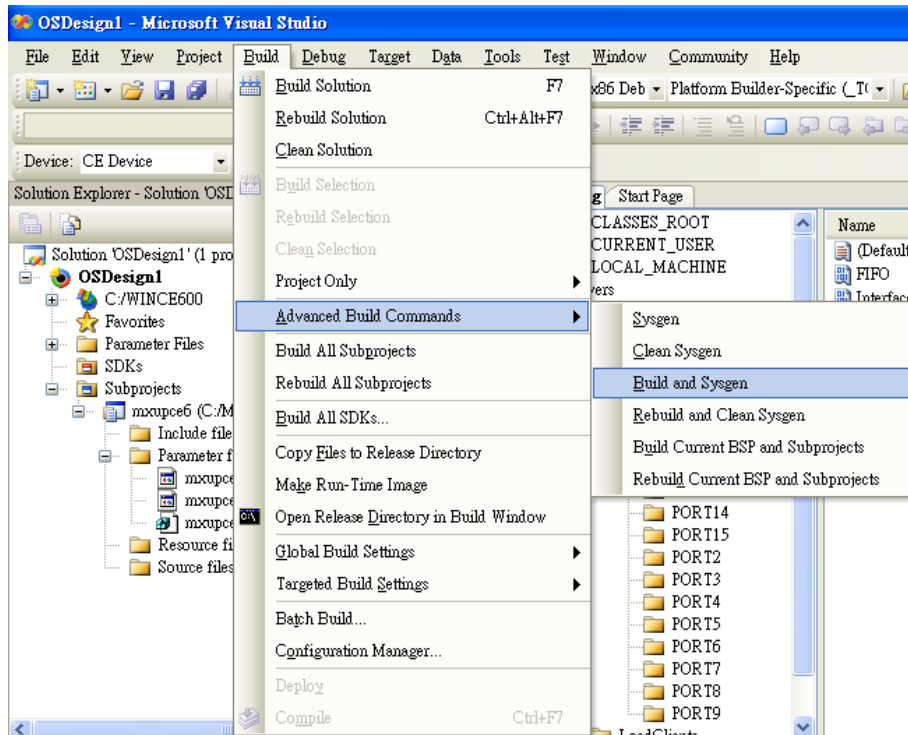
- Open the project you created. Click **Project** on top of the screen, and then select **Add Existing Subproject**. Switch the folder to **"C:\MOXAUPORT\wince600\Uport"** and add subprojects into your OS Design. Assign the pbpxml file to a different folder (i.e.mxupce6.pbpxml).



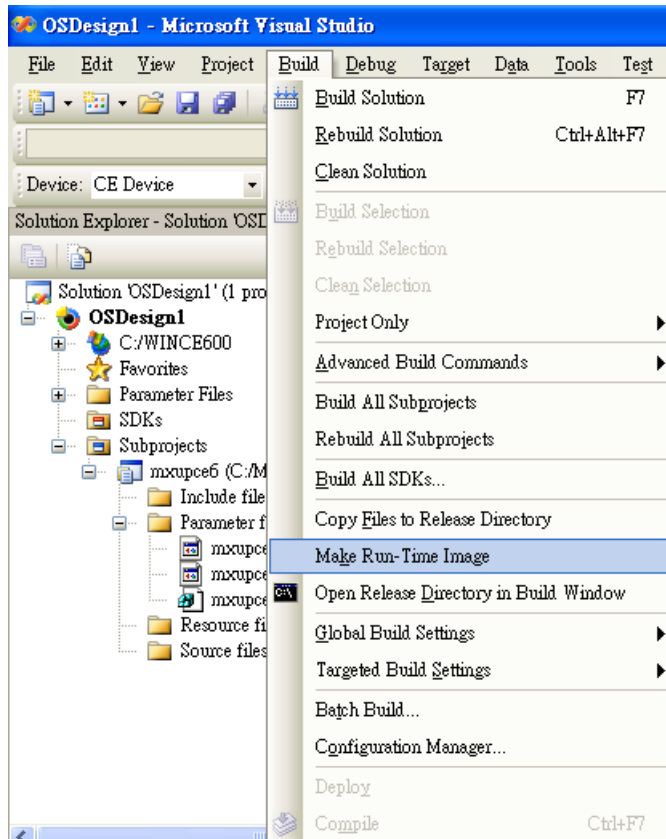
- After the subproject is added, you may configure the **"mxupce6.reg"** registry file with the location **[HKEY_LOCAL_MACHINE\Drivers\USB\ClientDrivers\MXU_PORT]**.



- Open "Build", select "Advanced Build Commands" and "Build Sysgen". This operation will take you a few minutes.



- After building sysgen, select "Build" and "Make Run-Time Image" to create the WinCE OS image. Finally, copy your image file to the target Host.

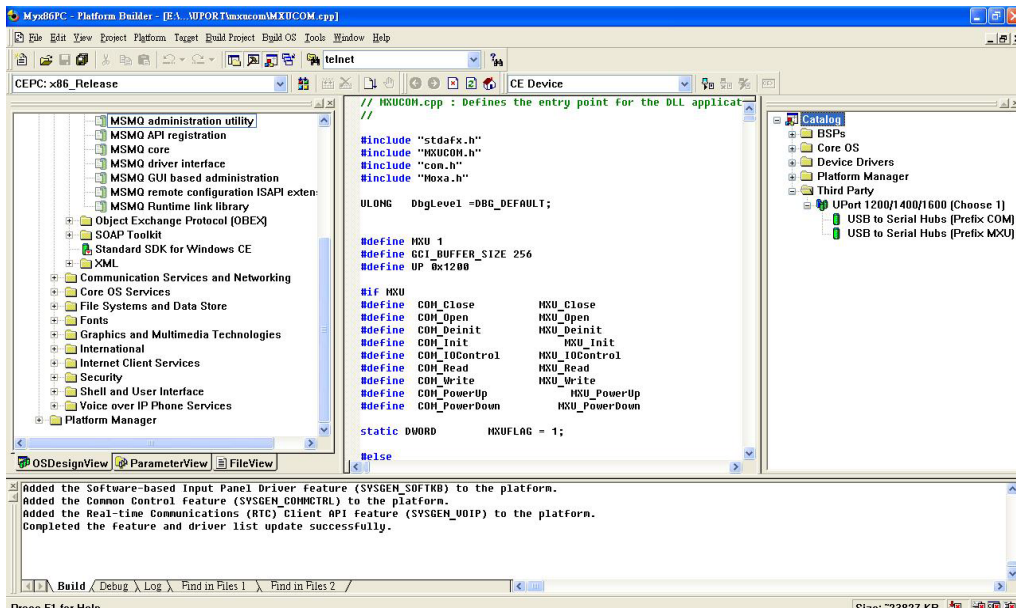


- Configure the interface on the target device using the configuration tool found in "Start → Programs → MOXA UP Configuration Panel\UPort Configuration Utility".

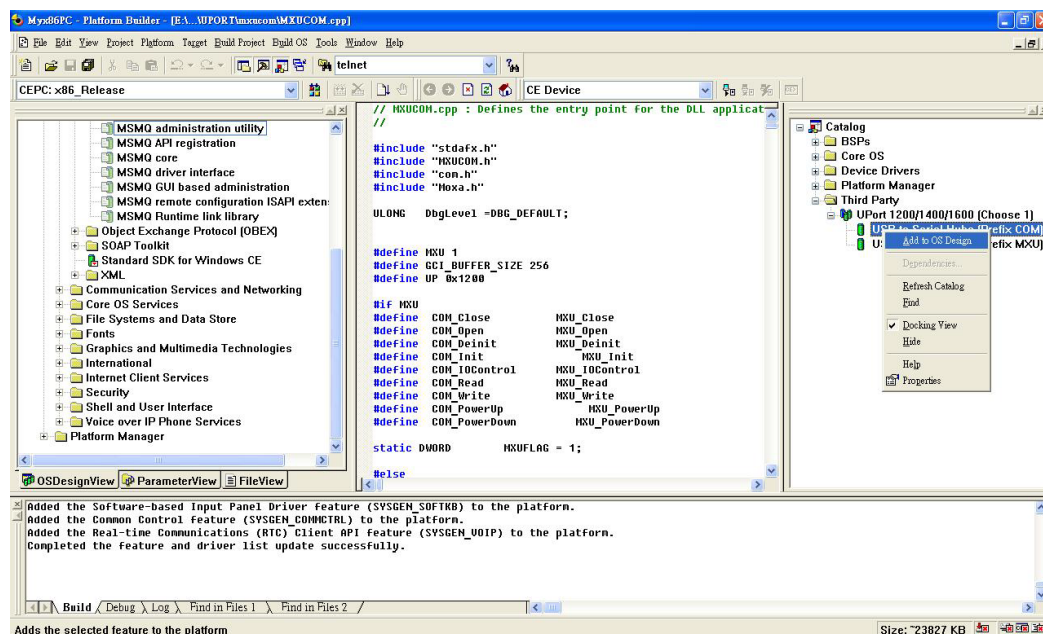
Installation With an Installation Package for Win CE 5.0

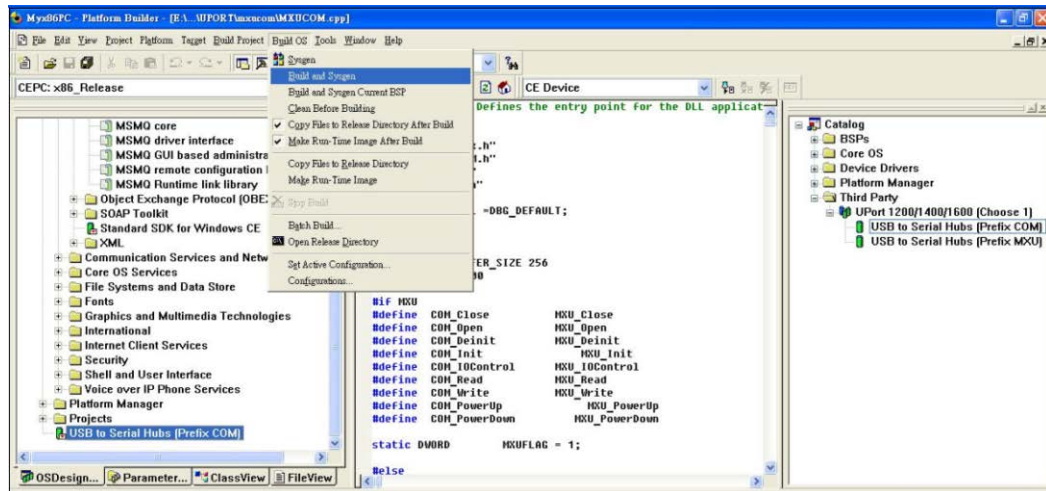
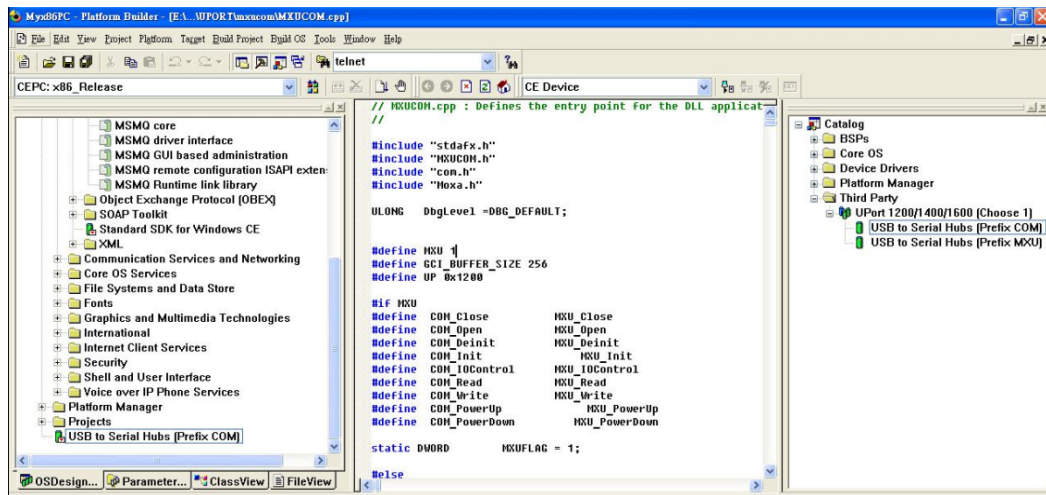
In this section, we describe how to install the Moxa Win CE 5.0 Driver on a Windows CE 5.0 operating system.

1. Obtain a copy of the UPort 1200/1400/1600 Series WinCE 5.0 driver package and extract it to your computer. Double click the installation package and it will automatically copy the UPort folder to "\\WINCE500\\PLATFORM\\" (e.g., C:\WINCE500\PLATFORM\UPort) and import the UPort 1200/1400/1600 WinCE 5.0 driver into the "Catalog".
2. Open your workspace in Platform Builder, and then open "Manage Catalog Items" (**View & Catalog**). You will find the UPort 1200/1400/1600 WinCE 5.0 driver in the "Third Party" folder.



3. Right-click on the driver "USB to Serial Adapters (Prefix COM)" or "USB to Serial Adapters (Prefix MXU)" and then choose "Add to OS Design." After adding the driver, you will be able to find it in your workspace, after which you can start to build your OS and download it into a target.



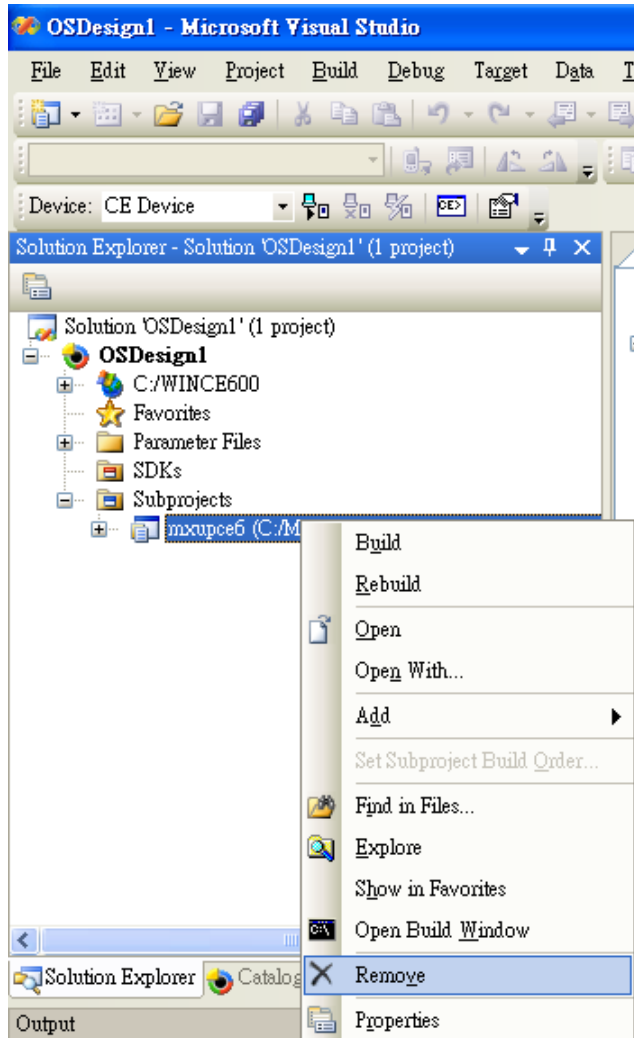


- Interface configuration. On the target device, configuration tool will be found in **“Start→Programs→MOXA UP Configuration Panel\UPort Configuration Utility”**.

Removing the Moxa Win CE 5.0/ CE6.0 Driver

For Win CE 6.0 Driver:

1. Select the driver to remove.



2. Switch the folder to **C:\ MOXAUPORT ** and double click **"unins000.exe"** to remove the installation folder.

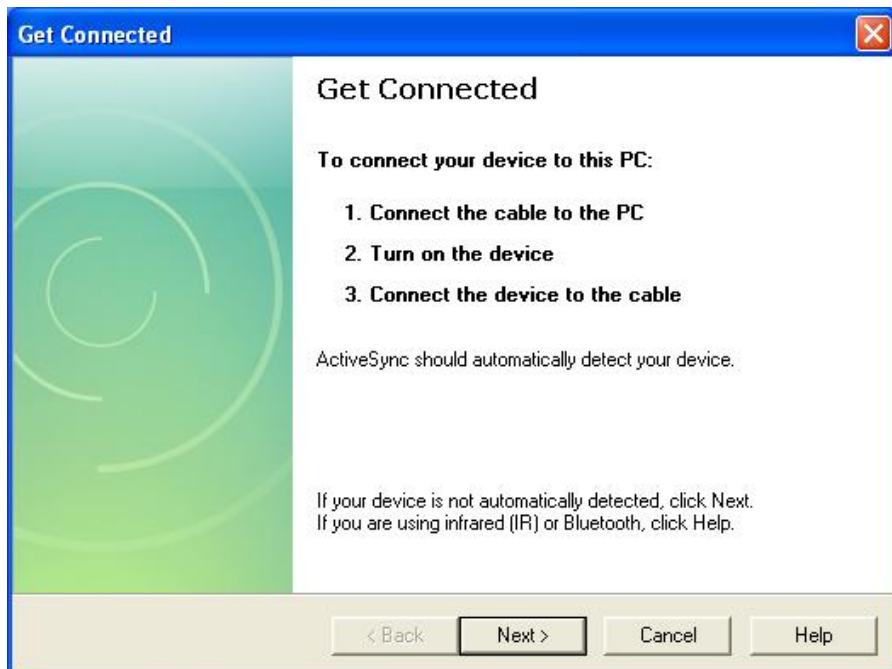
For Win CE 5.0 Driver:

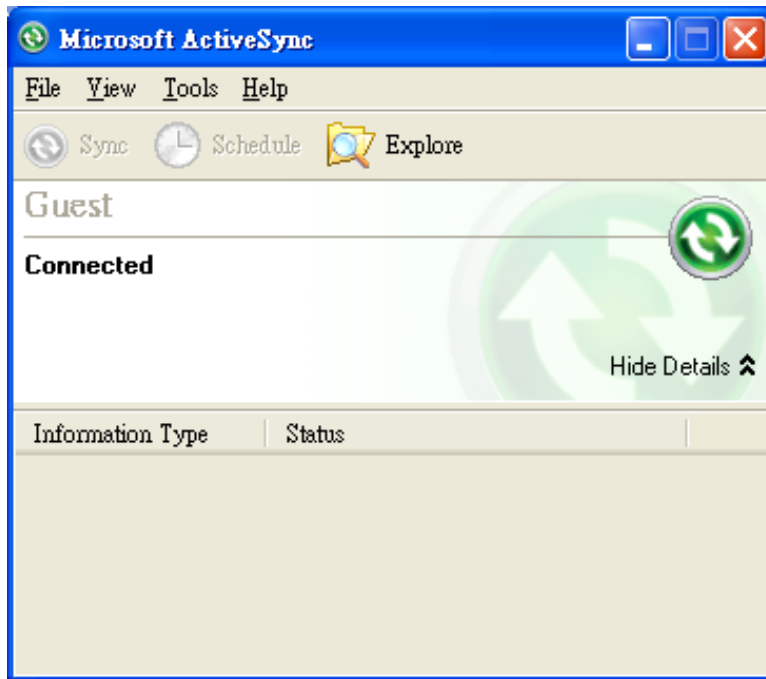
1. In the "OSDesign_View", delete "USB to Serial Adapters (Prefix XXX)".
2. Remove the driver from Control Panel.
3. Checkmark "clean before building".
4. Use "build and sysgen" to rebuild the image.

Installation With a CAB File

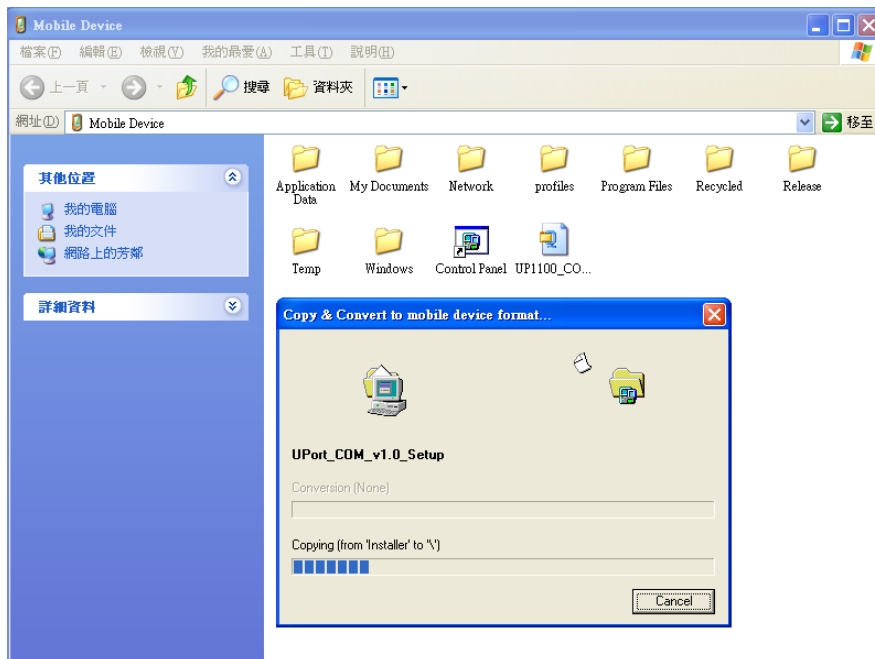
Install the UPort 1200/1400/1600 series Win CE driver onto the target host.

1. If you do not have ActiveSync, install Microsoft ActiveSync in the source PC. Before running ActiveSync, use an RS-232 null modem cable to connect the WinCE Device (CEPC) and the PC.
2. Execute the command **repllog** from the WinCE device's command prompt. When the **New Partnership** window appears, select **No** and then click **Next** to connect through ActiveSync.





3. Click on the “**Explore**” button in the ActiveSync window, and then copy the UPort_COM_v1.0_Setup.cab (Win CE 6.0) or UPort_COM_v1.1_Setup.cab (Win CE 5.0) file to the “Mobile/Target Device”.



4. Double click on the CAB file (UPort_COM_v1.0_Setup.cab (Win CE 6.0) or UPort_COM_v1.1_Setup.cab (Win CE 5.0)) to start installing the UPort 1200/1400/1600 Series WinCE driver. After installing the driver, plug the UPort 1200/1400/1600 Series USB Serial device into the WinCE device’s USB port. The driver will be loaded automatically, after which the UPort 1200/1400/1600 will be ready to use.

Removing the Moxa Win CE 5.0/ CE6.0 Driver

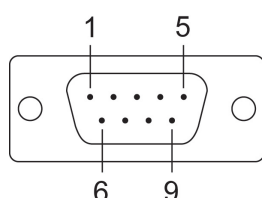
1. Enter **Control Panel** → **Remove Programs**.
2. Select MOXA UPort 1200/1400/1600 Windows CE6 Driver Ver1.0 (For Win CE 6.0) or MOXA UPort 1200/1400/1600 Windows CE5 Driver Ver1.1 (For Win CE 5.0).
3. Click **Remove**.

Serial Port Pin Assignments

The UPort 1250/1250I have 2 RS-232/422/485 ports, the UPort 1410 has 4 RS-232 ports, the UPort 1450/1450I have 4 RS-232/422/485 ports, the UPort 1610-8/1610-16 have 8 or 16 RS-232 ports, and the UPort 1650-8/1650-16 has 8/16 RS-232/422/485 ports.

DB9 Male RS-232 Port

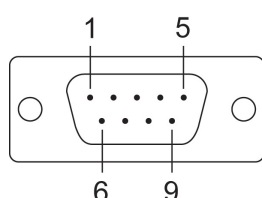
UPort 1410/1610-8/1610-16



Pin	RS-232
1	DCD
2	RxD
3	TxD
4	DTR
5	GND
6	DSR
7	RTS
8	CTS

DB9 Male RS-232/422/485 Port

UPort 1250/1250I/1450/1450I/1650-8/1650-16



Pin	RS-232	RS-422/ 4-wire RS-485	2-wire RS-485
1	DCD	TxD-(A)	-
2	RxD	TxD+(B)	-
3	TxD	RxD+(B)	Data+(B)
4	DTR	RxD-(A)	Data-(A)
5	GND	GND	GND
6	DSR	-	-
7	RTS	-	-
8	CTS	-	-

Mini DB9F-to-TB* for RS-422/485 wiring

DB9F		Terminal Block
1	=====	2
2	=====	1
3	=====	3
4	=====	4
5	=====	5

*An adapter is included with the UPort 1250, 1250I, 1450, 1450I, 1650-8, and 1650-16.