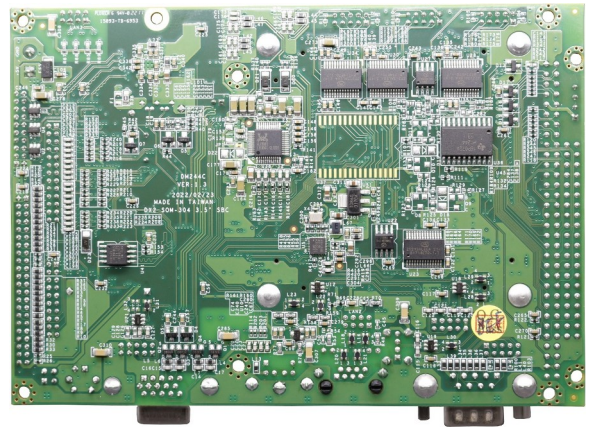
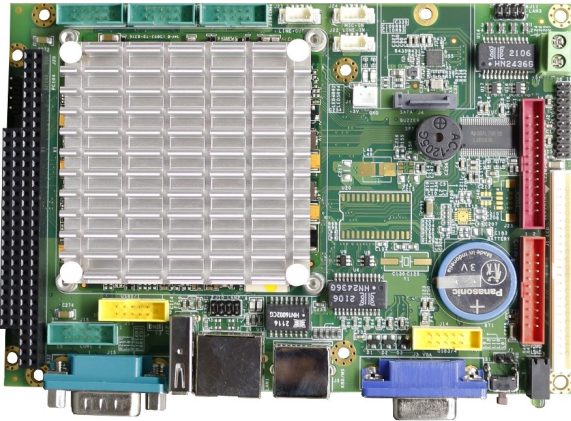


# VDX2-6526-V2



## Specifications

CPU	DM&P SoC Vortex86DX2 800MHz, L1: 16K I-Cache, 16K D-Cache, L2 Cache: 256KB			
RAM	512MB/1GB DDR2 Onboard			
BIOS	AMI BIOS			
Bus	PC/104 Standard Compliant			
Display	Integrated 2D VGA chip with VGA and TFT/LVDS Flat Panel Interface Support (Either VGA or LCD) VGA: Maximum resolution up to 1920 x 1080 @ 60Hz LVDS: Maximum resolution up to 1280 x 1024 @ 60Hz, single channel 24-bit LVDS			
LAN	Integrated 10/100Mbps Ethernet x1	Realtek 8111H GbE x2		
Disk Support	SATA DOM			
I/O Interface	RS232/485 x4 16-bit GPIO x1 HD Audio	USB (ver. 2.0) x4 DOS hot SWAP x1 (Optional)	Parallel x1 PS/2 touch controller x1 (Optional)	
Connectors	2.54mm 4-pin pin header for DC output x1 2.0mm 44-pin box header for LCD x1 2.0mm 20-pin pin header for LVDS x1 2.0mm 8-pin pin header for Ethernet x1 2-pin box header for DC 5V output x1 15-pin D-Sub female connector for VGA x1	2.54mm 2-pin pin header for Reset x1 2.0mm 26-pin box header for Parallel x1 2.0mm 10-pin box header for USB x2 2.0mm 8-pin pin header for GbE x1 7-pin SATA connector for SATA DOM x1 9-pin D-Sub male connector for RS232 x1	2.54mm 104-pin PC/104 connector x1 2.0mm 20-pin box header for 16-bit GPIO x1 2.0mm 10-pin box header for RS232 x4 1.25mm 4-pin wafer connector for Line-out/MIC-in x2 RJ45 connector for GbE x1 PS/2 connector for Keyboard/Mouse x1	
Power Requirement	DC+5V @ 1A (Typical)			
Operating Temperature	-10°C - +60°C (Single Core)		-40°C - +85°C (Optional)	
Dimension	102 x 146mm			
Weight	150g			
O/S Support	Windows 7 Windows XP Professional POS Ready (WePOS)	Windows Embedded Standard 7 Windows Embedded 2009 QNX	Windows Embedded Compact 7 Linux VxWorks	Windows Embedded CE6.0 DOS Free BSD

## Ordering Information

PART NO.	CPU	DRAM (DDR3)	Storage	Display	LAN	GbE	USB (ver. 2.0)	RS232	16-bit GPIO	Parallel	Audio	Bus	Touch
VDX2-6526-V2-512	800 MHz	512MB	SATA	VGA, LVDS, LCD	1	2	4	4	1	1	Line-out/MIC-in	PC/104	Not Supported
VDX2-6526-V2-512-T	800 MHz	512MB	SATA	VGA, LVDS, LCD	1	2	4	4	1	1	Line-out/MIC-in	PC/104	1
VDX2-6526-V2-1G	800 MHz	1GB	SATA	VGA, LVDS, LCD	1	2	4	4	1	1	Line-out/MIC-in	PC/104	Not Supported
VDX2-6526-V2-1G-T	800 MHz	1GB	SATA	VGA, LVDS, LCD	1	2	4	4	1	1	Line-out/MIC-in	PC/104	1