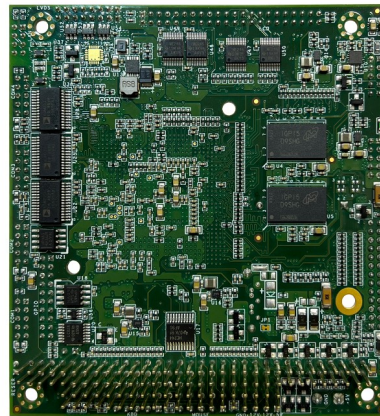
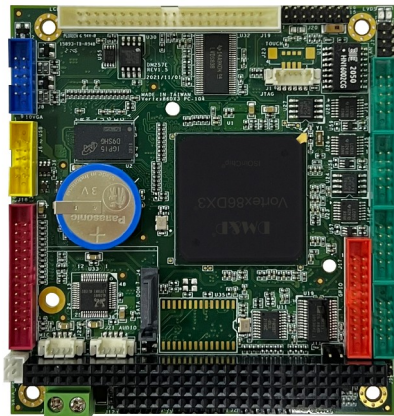


VDX3-6754-V2



Specifications

CPU	DM&P SoC Vortex86DX3 1GHz, L1: 32K I-Cache, 32K D-Cache, L2 Cache: 512KB (600MHz for VDX3-6754S-V2)			
RAM	256MB/1GB/2GB DDR3 Onboard			
BIOS	AMI BIOS			
Bus	PC/104 Standard Compliant			
Display	Integrated 2D VGA chip with Dual Display Support (VGA + TTL / VGA + LVDS) VGA: Maximum resolution up to 1920 x 1080 @ 60Hz LVDS: Maximum resolution up to 1024 x 768 @ 60Hz, single channel 24-bit LVDS			
LAN	Integrated 10/100Mbps Ethernet x1			
Audio	ALC888S			
Disk Support	SATA DOM			
I/O Interface	RS232/485 x4 16-bit GPIO x1 HD Audio	USB (ver. 2.0) x2 DOS hot SWAP x1 (Optional)	Parallel x1 PS/2 touch controller x1 (Optional)	
Connectors	2.54mm 4-pin pin header for DC output x1 2.54mm 4-pin pin header for Keyboard x1 2.0mm 44-pin box header for LCD x1 2.0mm 20-pin pin header for LVDS x1 2.0mm 8-pin pin header for Ethernet x1 7-pin SATA connector for SATA DOM x1	2.54mm 2-pin pin header for Reset x1 2.54mm 4-pin pin header for Mouse x1 2.0mm 26-pin box header for Parallel x1 2.0mm 10-pin pin header for USB x2 2-pin box header for DC 5V output x1 7-pin SATA connector for SATA DOM x1	2.54mm 104-pin PC/104 connector x1 2.0mm 20-pin box header for 16-bit GPIO x1 2.0mm 10-pin box header for RS232 x4 1.25mm 4-pin wafer connector for Line-out/MIC-in x2 15-pin D-Sub female connector for VGA x1	
Power Requirement	DC+5V @ 1300mA (Typical) / DC+5V @ 680mA for VDX3-6754S-V2			
Operating Temperature	-20°C - +70°C (Single Core) -10°C - +60°C (Dual Core)	-40°C - +85°C (Optional for Single Core) -20°C - +70°C (Optional for Dual Core)		
Dimension	90 x 96mm			
Weight	80g			
O/S Support	Windows 7 Windows XP Professional POS Ready (WePOS)	Windows Embedded Standard 7 Windows Embedded 2009 QNX	Windows Embedded Compact 7 Linux VxWorks	Windows Embedded CE6.0 DOS Free BSD

Ordering Information

PART NO.	CPU	DRAM (DDR3)	Storage	Display	LAN	USB (ver. 2.0)	RS232	16-bit GPIO	Parallel	Audio	Bus	Touch
VDX3-6754-V2-1G	1GHz	1GB	SATA	VGA, LVDS, LCD	1	2	4	1	1	Line-out/MIC-in	PC/104	Not Supported
VDX3-6754-V2-2G	1GHz	2GB	SATA	VGA, LVDS, LCD	1	2	4	1	1	Line-out/MIC-in	PC/104	Not Supported
VDX3-6754S-V2	600 MHz	256MB	SATA	VGA, LVDS, LCD	1	2	4	1	1	Not Supported	PC/104	Not Supported
CABLE-SET-6754	Cable set for VDX3-6754											